



AD Systems Sliding Door Opening Force

Under ADA guidance, the force needed to open a door is less than 5 pounds of force, with the exception of the initial resistance of a door in a latched position. Our design has been tested to demonstrate that the opening force averages below 5 pounds for a door up to 220 pounds once the initial resistance to disengage the soft close damper is overcome.

The initial force to open the door can vary based on weight of the door. Our systems including doors under 176.4lbs (80kg) take less than 10 pounds of force. Doors up to 220lb (100kg) may vary from 10-14lb of force to initiate motion.

The 2010 ADA Standards for Accessible Design read as follows in addressing this matter:

“Advisory 404.2.9 Door and gate opening force. The maximum force pertains to the continuous application of force necessary to fully open a door, not the initial force needed to overcome the inertia of the door. It does not apply to the force required to retract bolts or to disengage other devices used to keep the door in a closed position.”



EXAMSLIDE™
High Performance Doors



Frame

Designed to protect wall opening

Handle

ADA clearances maintained

Sill

Concealed sill guide

AD Systems ExamSlide™ was specifically designed to meet the rigorous demands of today's lean healthcare medical facilities. Constructed with the highest quality, commercial grade hardware and precision engineered framing system to provide years of trouble-free service.

ADA-compliant operation, along with 'soft-close' technology, ensure that patients of all ages and abilities can easily open and close the door. AD Systems offers standard perimeter gasketing and the potential for acoustic mitigation on all four sides with our optional patent pending automatic drop seal, providing the best possible noise reduction to maintain speech privacy standards.



Standard Features

AD SYSTEMS EXAMSLIDE™ STANDARD FEATURES:

- Space-saving design saves up to 30 sq ft, when compared to a swing door
- Heavy-duty, top-hung roller system for smooth, maintenance-free operation
- Concealed floor guide - no exposed floor track
- Optional patent pending acoustic mitigation on all four sides of the door to achieve speech privacy (NIC 39); three side perimeter gasket standard
- ADA-compliant operation
- Soft-close dampening system prevents slamming
- Easy to clean aluminum frame system wraps and protects wall construction

Options

HARDWARE OPTIONS:

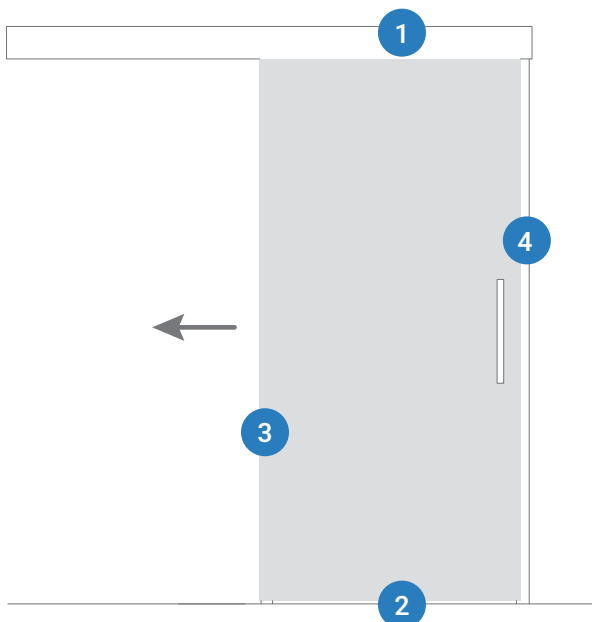
- ADA thumb turn lock with occupancy indicator
- ADA self-latching mortise with thumb turn and egress handle
- Key lock
- Magnetic lock for integration with key card access control

1-3/4 DOOR OPTIONS:

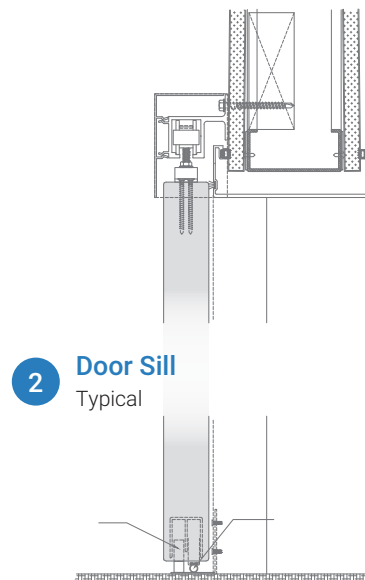
- Flush wood door
- Flush laminate door
- Wood stile and rail door with glass vision lite
- Glass units with integral blinds or louvers
- Lead shielding doors and glazing for X-Ray rooms

ELEVATION VIEW

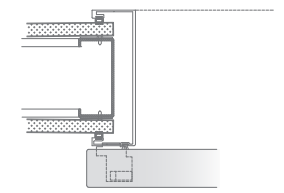
Opens to left



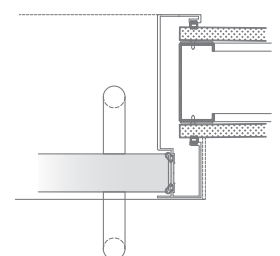
1 Head @ Opening
Typical



3 Jamb @ Sill Side



4 Jamb @ Pull Side
Typical



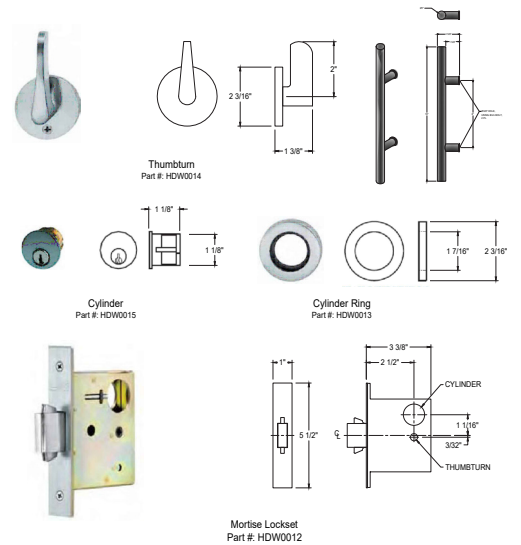
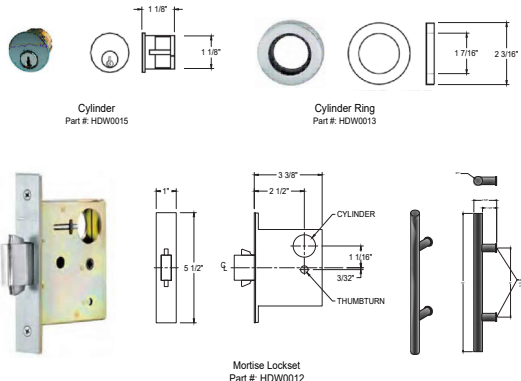


AD SYSTEMS

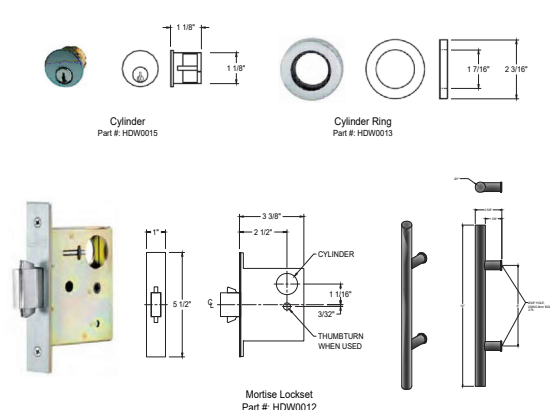
HIGH PERFORMANCE DOORS

The AD Systems Hardware Selection Guide is designed to assist architects and other specifiers with the selection of hardware for AD Systems sliding doors. All AD Systems products come configured with soft closer rolling systems, designed to softly close the doors and keep the doors in a closed position (in most cases negating the need for a secondary latch unless desired for privacy, security or due to secondary code requirement for a positive latch).

KEY LOCKS

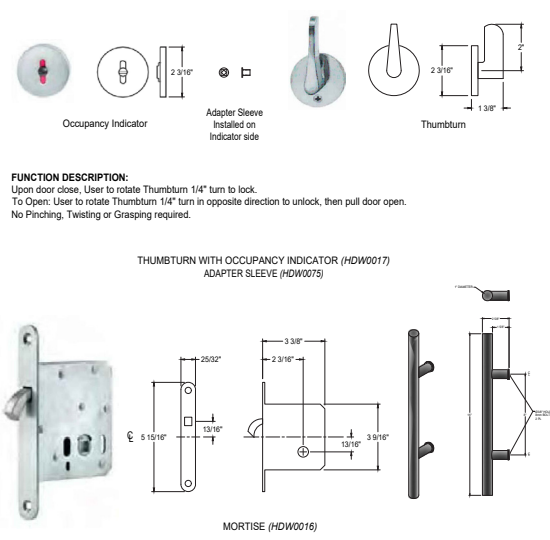
HARDWARE GROUP	DESCRIPTION	TYPE	LOCK COMPATABILITY	USER FUNCTION	PRODUCT ILLUSTRATION
<p>AD-1</p>	<p>AD-1 - Thumbturn with Key Lock & 16 inch BTB Ladder Pull</p>	<p>Keyed Lock with Dead Bolt Thumbturn</p>	<p>5 pin construction cylinder SFIC 6 pin, SFIC 7 pin LFIC</p>	<p>User turns key from outside to lock or unlock door. User grasps fixed handle on outside to slide door open. User grasps fixed handle inside to slide door closed. User locks door inside by turning thumbturn. User turns thumbturn inside to unlock door. User grasps fixed handle on inside to slide door open.</p>	 <p>Thumbturn Part #: HDW0014</p> <p>Cylinder Part #: HDW0015</p> <p>Cylinder Ring Part #: HDW0013</p> <p>Mortise Lockset Part #: HDW0012</p>
<p>AD-1B</p>	<p>AD-1B - No Thumbturn with Key Lock & 16 inch BTB Ladder Pull (NO EGRESS FROM INSIDE IF LOCKED FROM OUTSIDE)</p>	<p>Keyed Lock with Dead Bolt Thumbturn</p>	<p>5 pin Schlage C Keyway SFIC LFIC</p>	<p>User turns key from outside to lock or unlock door. User grasps fixed handle on outside to slide door open. User grasps fixed handle inside to slide door closed. Door does not lock from inside. User grasps fixed handle on inside to slide door open.</p>	 <p>Cylinder Part #: HDW0015</p> <p>Cylinder Ring Part #: HDW0013</p> <p>Mortise Lockset Part #: HDW0012</p>

KEY LOCKS

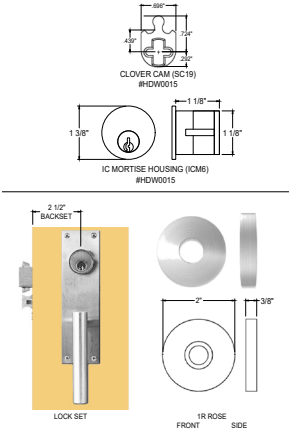
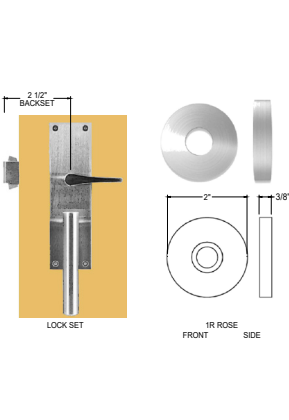
HARDWARE GROUP	DESCRIPTION	TYPE	LOCK COMPATABILITY	USER FUNCTION	PRODUCT ILLUSTRATION
AD-1C	AD-1C - BTB Key Lock & 16 inch BTB Ladder Pull	Back to Back Keyed Lock with Dead Bolt	5 pin Schlage C Keyway SFIC LFIC	User turns key from outside to lock or unlock door. User grasps fixed handle on outside to slide door open. User grasps fixed handle inside to slide door closed. User locks door inside by turning key. User turns key inside to unlock door. User grasps fixed handle on inside to slide door open.	 <p>Cylinder Part #: HDW0015</p> <p>Cylinder Ring Part #: HDW0013</p> <p>Mortise Lockset Part #: HDW0012</p>

PRIVACY LOCKS (BY THUMBTURN)

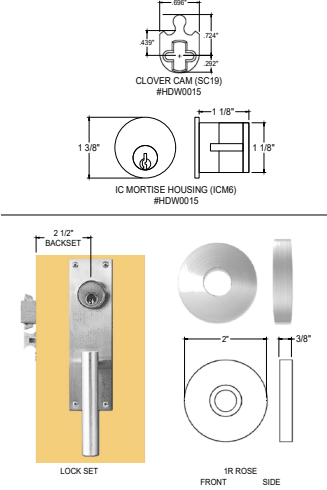
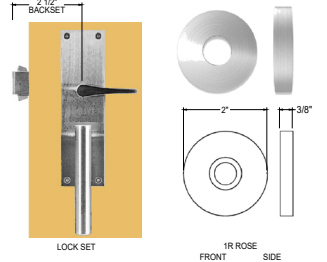
*AD Systems "thumbturns" do not require pinching, twisting or grasping or special knowledge to operate.

HARDWARE GROUP	DESCRIPTION	TYPE	LOCK COMPATABILITY	USER FUNCTION	PRODUCT ILLUSTRATION
AD-2	AD-2 - Thumbturn with Indicator & 16 inch BTB Ladder Pull	Privacy	No Key Option	User grasps fixed handle from outside to slide door open. User grasps fixed handle inside to slide door closed. User locks or unlocks door from inside by turning thumbturn, and indicator on outside shows room is occupied. User grasps fixed handle from inside to slide door open. Coin override allows unlock from outside in event of emergency.	 <p>Occupancy Indicator</p> <p>Adapter Sleeve Installed on Indicator side</p> <p>Thumbturn</p> <p>FUNCTION DESCRIPTION: Upon door close, User to rotate Thumbturn 1/4" turn to lock. To Open: User to rotate Thumbturn 1/4" turn in opposite direction to unlock, then pull door open. No Pinching, Twisting or Grasping required.</p> <p>THUMBTURN WITH OCCUPANCY INDICATOR (HDW0017) ADAPTER SLEEVE (HDW0075)</p> <p>MORTISE (HDW0016)</p>


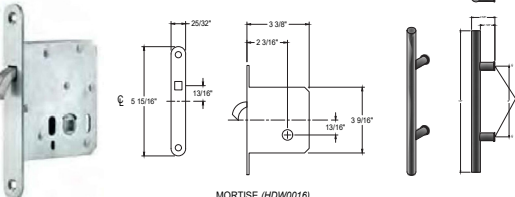
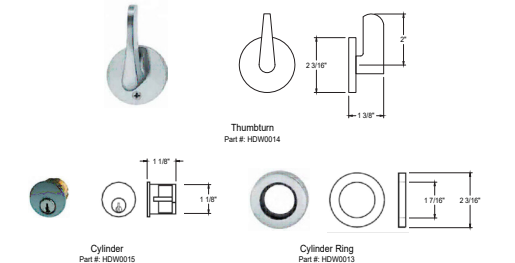
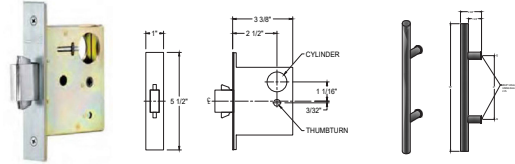
SELF LATCHING / POSITIVE LATCHING

HARDWARE GROUP	DESCRIPTION	TYPE	LOCK COMPATABILITY	USER FUNCTION	PRODUCT ILLUSTRATION
<p>AD-9</p>	<p>AD-9 - Self Latching Single Egress Thumbturn with Key Lock</p>	<p>Self Latching Keyed Lock</p>	<p>5 pin cylinder 6 pin cylinder SFIC LFIC</p>	<p>Upon door closing the latch will automatically engage. User turns key from outside to lock or unlock door. User pulls lever from outside to slide door open. User pulls lever from inside to slide door closed. User locks door inside by turning thumbturn. User rotates lever from inside to automatically release lock (single action egress). User slides door open.</p>	
<p>AD-9A</p>	<p>AD-9A: Self Latching Single Egress Thumbturn with Indicator</p>	<p>Self Latching Privacy</p>	<p>5 pin Schlage C Keyway SFIC LFIC</p>	<p>Upon door closing the latch will automatically engage. User pulls lever from outside to slide door open. User pulls lever from inside to slide door closed. User locks door inside by turning thumbturn. User rotates lever from inside to automatically release lock (single action egress). User slides door open.</p>	

SINGLE ACTION EGRESS

HARDWARE GROUP	DESCRIPTION	TYPE	LOCK COMPATABILITY	USER FUNCTION	PRODUCT ILLUSTRATION
<p>AD-9</p>	<p>AD-9 - Self Latching Single Action Egress Thumbturn with Key Lock</p>	<p>Self-Latching Keyed Lock</p>	<p>5 pin cylinder 6 pin cylinder SFIC LFIC</p>	<p>Upon door closing the latch will automatically engage. User turns key from outside to lock or unlock door. User pulls lever from outside to slide door open. User pulls lever from inside to slide door closed. User locks door inside by turning thumbturn. User rotates lever from inside to automatically release lock (single action egress). User slides door open.</p>	 <p>The illustration for AD-9 includes technical drawings for the Clover Cam (SC19) and IC Mortise Housing (ICM6). The Clover Cam drawing shows dimensions: 66°, 4.5", 7.2", and 2.2". The IC Mortise Housing drawing shows dimensions: 1.38", 1.18", and 1.18". Below these are photographs of the lock set and 1R rose, with dimensions: 2.12" BACKSET, 2", and 3/8".</p>
<p>AD-9A</p>	<p>AD-9A - Self Latching Single Egress Thumbturn with Indicator</p>	<p>Self Latching Privacy</p>	<p>5 pin Schlage C Keyway SFIC LFIC</p>	<p>Upon door closing the latch will automatically engage. User pulls lever from outside to slide door open. User pulls lever from inside to slide door closed. User locks door inside by turning thumbturn. User rotates lever from inside to automatically release lock (single action egress). User slides door open.</p>	 <p>The illustration for AD-9A includes technical drawings of the lock set and 1R rose. The lock set drawing shows a dimension of 2.12" BACKSET. The 1R rose drawing shows dimensions of 2" and 3/8".</p>

BI-PARTING PAIR DOORS

HARDWARE GROUP	DESCRIPTION	TYPE	LOCK COMPATABILITY	USER FUNCTION	PRODUCT ILLUSTRATION
<p>AD-2</p>	<p>AD-2 Bi-Parting - Thumbturn with Indicator & 16 inch BTB Ladder Pull</p>	<p>Privacy</p>		<p>User grasps fixed handle from outside to slide door open. User grasps fixed handle inside to slide door closed. User locks or unlocks door from inside by turning thumbturn, and indicator on outside shows room is occupied. User grasps fixed handle from inside to slide door open. Coin override allows unlock from outside in event of emergency.</p>	 <p>Occupancy Indicator Adapter Sleeve Installed on Indicator side Thumbturn</p> <p>FUNCTION DESCRIPTION: Upon door close, User to rotate Thumbturn 1/4" turn to lock. To Open: User to rotate Thumbturn 1/4" turn in opposite direction to unlock, then pull door open. No Pinching, Twisting or Grasping required.</p> <p>THUMBTURN WITH OCCUPANCY INDICATOR (HDW0017) ADAPTER SLEEVE (HDW0073)</p>  <p>MORTISE (HDW0016)</p>
<p>AD-1</p>	<p>AD-1 Bi-Parting - Thumbturn with Key Lock & 16 inch BTB Ladder Pull</p>	<p>Privacy</p>	<p>5 pin construction cylinder SFIC 6 pin, SFIC 7 pin LFIC</p>	<p>User turns key from outside to lock or unlock door. User grasps fixed handle on outside to slide door open. User grasps fixed handle inside to slide door closed. User locks door inside by turning thumbturn. User turns thumbturn inside to unlock door. User grasps fixed handle on inside to slide door open.</p>	 <p>Thumbturn Part #: HDW0014</p> <p>Cylinder Part #: HDW0015 Cylinder Ring Part #: HDW0013</p> 

Hardware Group AD6440 - Self-Latching Lock with Single Action Egress Lock

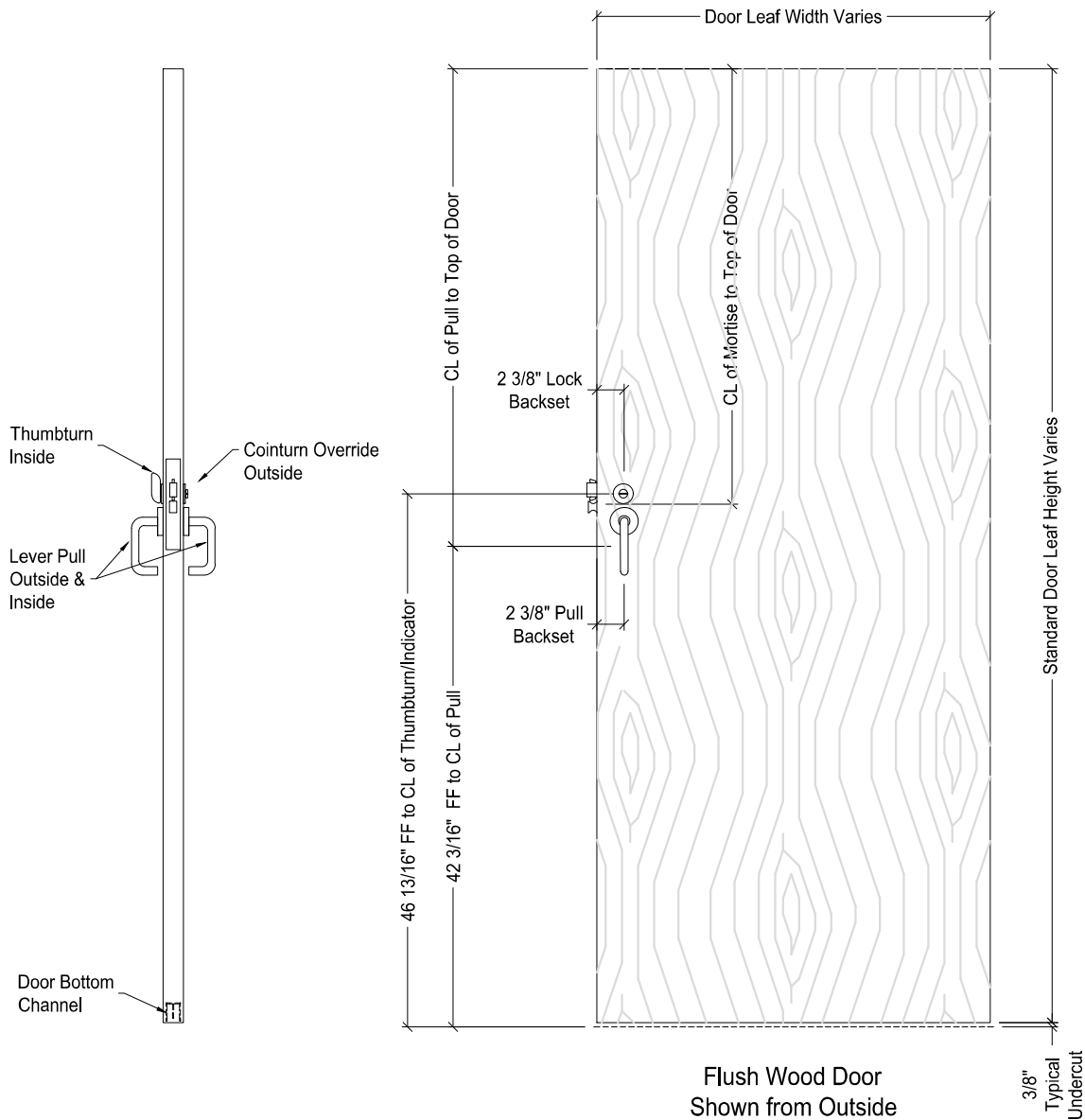
FUNCTION:

DIRECTION: OPEN RIGHT

FUNCTION: Lock with Cointurn Override & Thumbturn with Levers (Privacy)

User rotates lever from outside to slide door open. User rotates lever from inside to slide door closed. User locks door inside by turning thumbturn. User rotates lever from inside to automatically release lock (single action egress). User slides door open with lever.

Coin override allows unlock from outside in event of emergency.



Innovation behind every door
www.specADsystems.com
 1.425.374.1360

Hardware Group: AD6440
 BTB Lever Pulls
 Lock with Cointurn Override & Thumbturn
 Sliding Aluminum Stile & Rail Door

Hardware Group AD6440 - Self-Latching Lock with Single Action Egress Lock

AD-012021

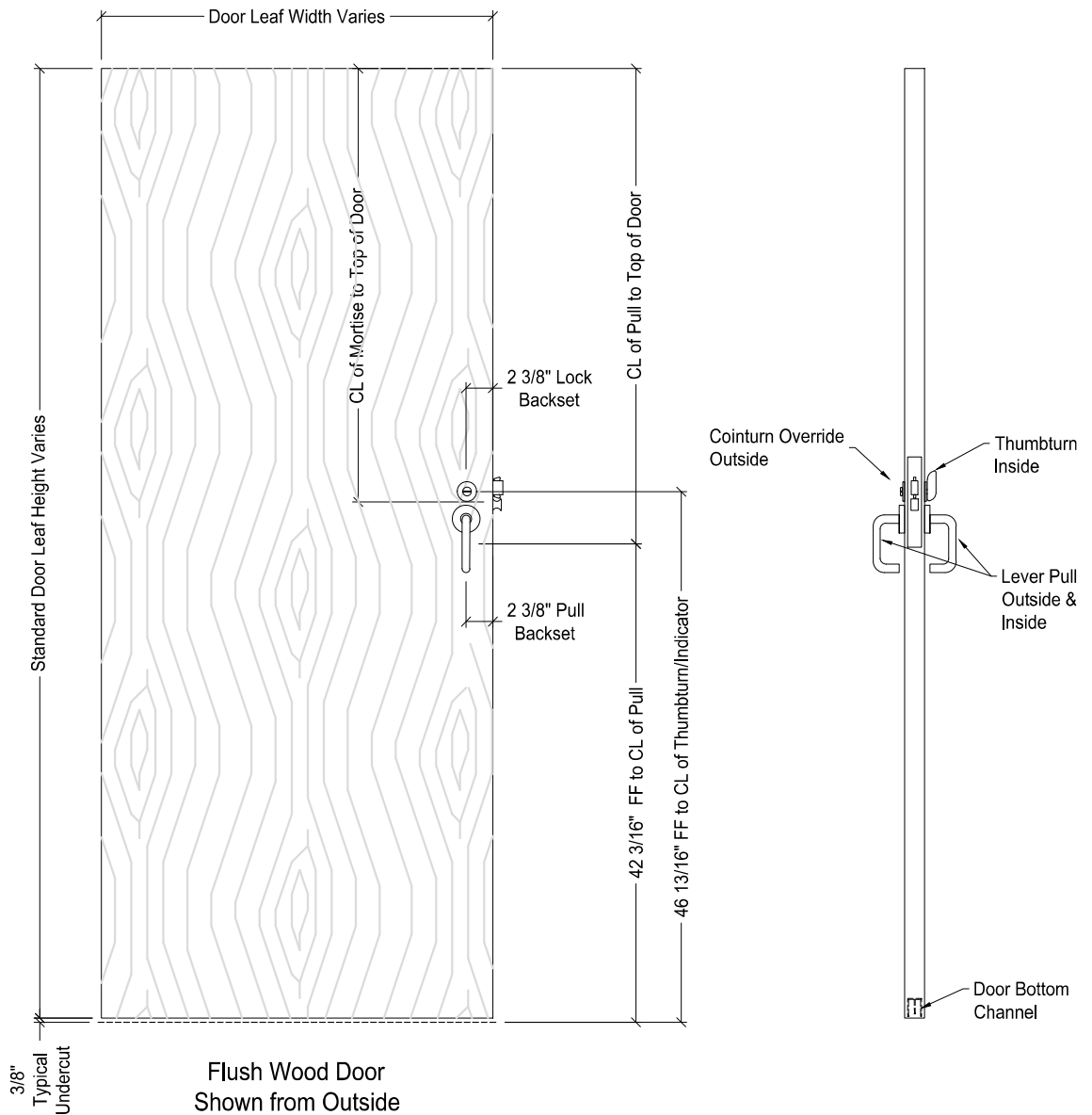
FUNCTION:

DIRECTION: OPEN LEFT

FUNCTION: Lock with Cointurn Override & Thumbturn with Levers (Privacy)

User rotates lever from outside to slide door open. User rotates lever from inside to slide door closed. User locks door inside by turning thumbturn. User rotates lever from inside to automatically release lock (single action egress). User slides door open with lever.

Coin override allows unlock from outside in event of emergency.



Innovation behind every door
www.specADsystems.com
 1.425.374.1360

Hardware Group: AD6440
 BTB Lever Pulls
 Lock with Cointurn Override & Thumbturn
 Sliding Aluminum Stile & Rail Door

ASSEMBLY NOTES:

1. DOOR LEAFS ARE SHIPPED ASSEMBLED, EXCEPT FOR HARDWARE.
2. FRAMING COMPONENTS ARE SHIPPED "K D".
 - HORIZONTAL COMPONENTS ARE CUT AS DRAWN.
 - VERTICAL COMPONENTS ARE CUT 2" LONG. FIELD CUT ONLY FROM BOTTOM OF COMPONENT.
3. UNLESS OTHERWISE INDICATED, THE VERTICAL COMPONENTS CAN BE CUT TO EXACT LENGTH IF GUARANTEED DIMENSIONS ARE PROVIDED.

ATTENTION CUSTOMER:

TO ENSURE THE ACCURACY OF YOUR DOOR MACHINING, PLEASE READ AND UNDERSTAND THE DOOR HANDING INFORMATION BELOW. IF YOU HAVE ANY QUESTIONS, PLEASE CONTACT YOUR AD SYSTEMS PROJECT MANAGER.

DOOR IS ALWAYS VIEWED FROM VALANCE SIDE FOR HANDING PURPOSES.

STANDARD LAYOUT SHOWS VALANCE SIDE IS OUTSIDE & NON VALANCE SIDE IS ROOM SIDE.

"OL" = OPEN LEFT "OR" = OPEN RIGHT

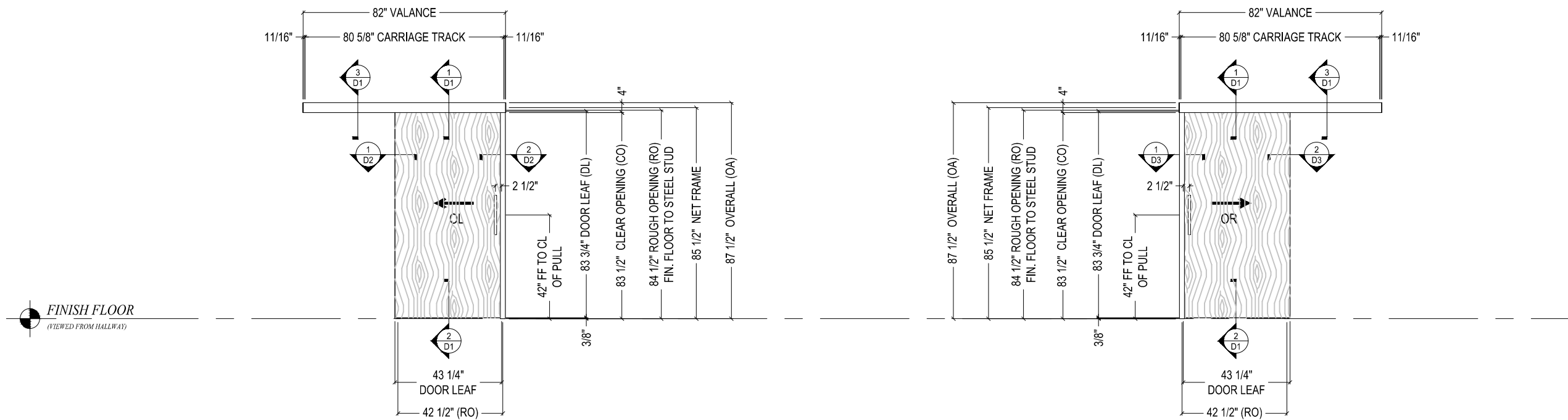
STANDARD HARDWARE CONFIGURATIONS: (IF EQUIPPED)

THUMB-TURN LEVER ALWAYS ON ROOM SIDE AND KEYED CYLINDER ALWAYS ON VALANCE SIDE ★

NOTE:

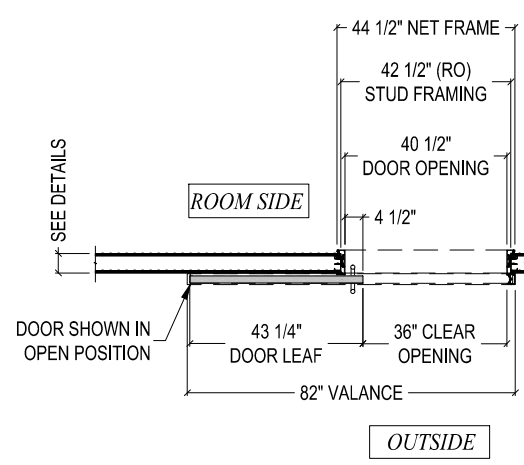
★ ANY DOOR THAT IS TO BE CONFIGURED OPPOSITE OF THE STANDARDS ABOVE MUST BE INDICATED BY AN "R" FOR REVERSE.

"OL-R" = OPEN LEFT - REVERSE "OR-R" = OPEN RIGHT - REVERSE

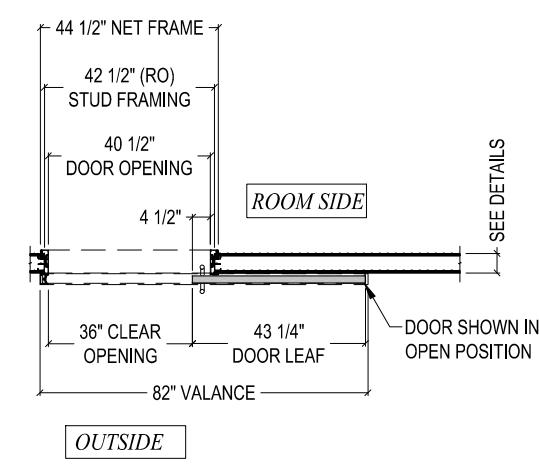


E1 (1) REQ'D THUS
LEFT OPEN

E2 (1) REQ'D THUS
RIGHT OPEN



P1 PLAN AT E1
LEFT OPEN



P2 PLAN AT E2
RIGHT OPEN

36" CLEAR OPENING

- OPTIONS:**
- 1" DIA. BACK TO BACK LADDER PULLS
 - LOCKS
 - BOTTOM TRACK WITH FIXED SILL GUIDE
 - ACOUSTIC BOTTOM TRACK SEAL WITH ADJUSTABLE SILL GUIDE

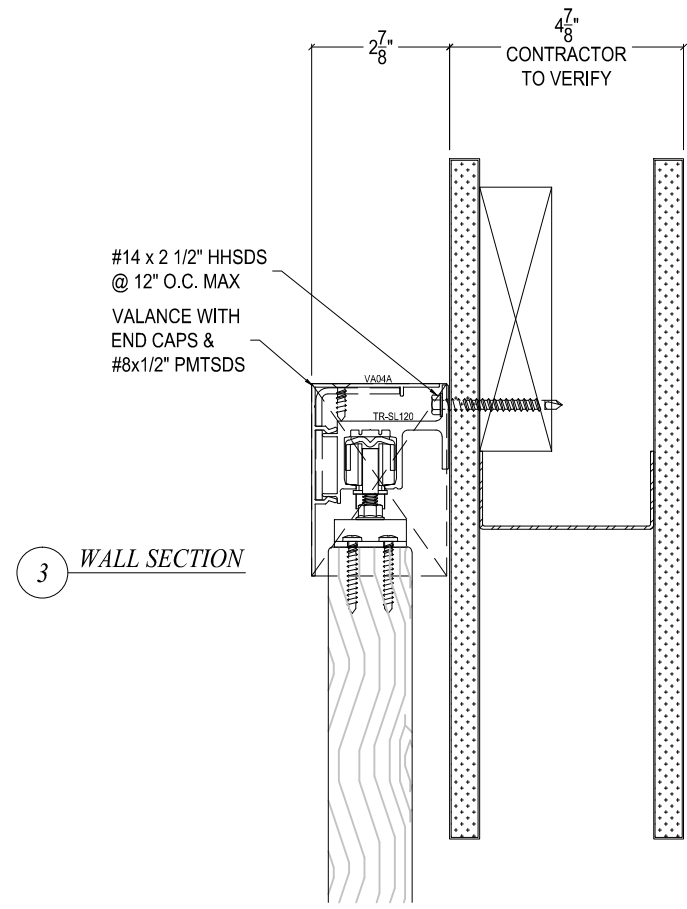
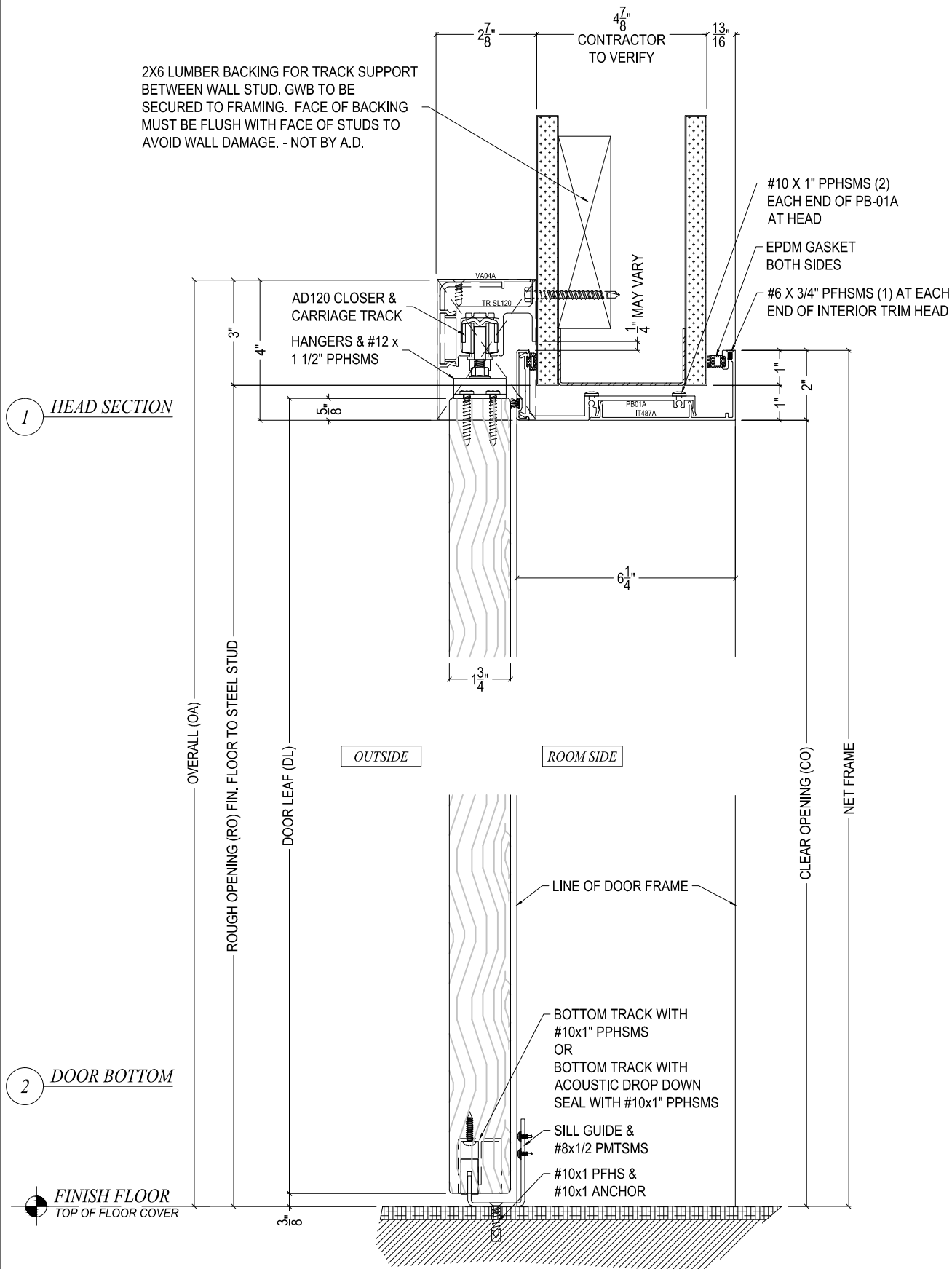
AD SYSTEMS HIGH PERFORMANCE BARN DOORS
FLUSH WOOD SINGLE SLIDER - ELEVATIONS & DETAILS
CLEAR OPENING WIDTHS SHOWN: 36"
JAMB SYSTEM AVAILABLE: 4 7/8"



HIGH PERFORMANCE DOORS
 2201 100th Street SW
 Everett, WA 98204
 425.374.1360
 1.855.328.6011
 www.specADsystems.com

ELEVATION
 DATE: 10/2016
 SCALE: 1/4" = 1'-0"
 DRAWN: CT
 SHEET NUMBER
36 IN CO

4 7/8" SYSTEM



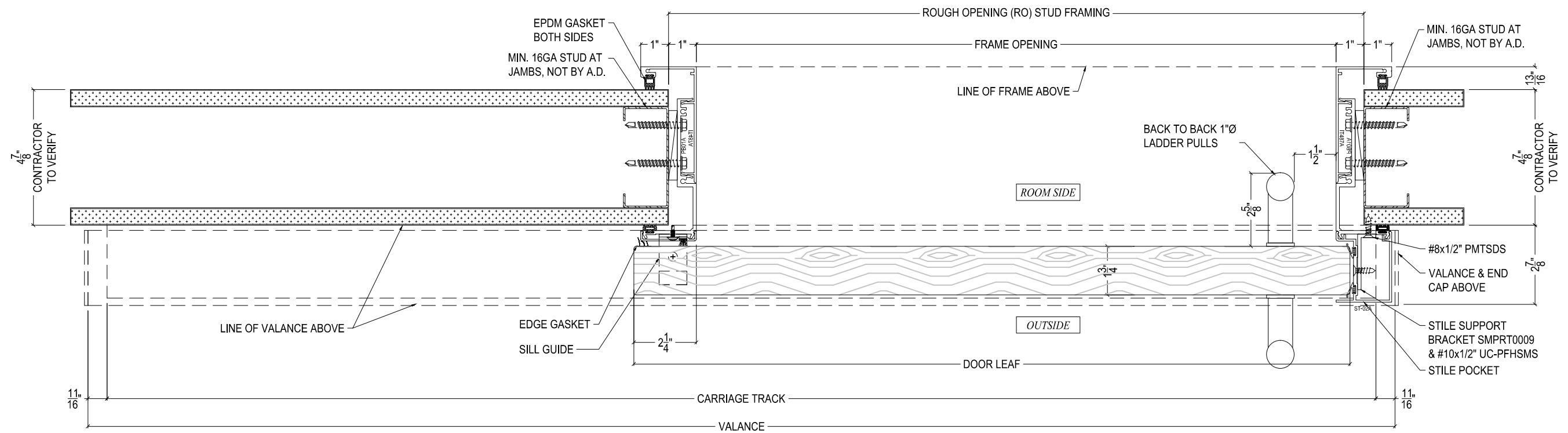
- OPTIONS:**
- 1" DIA. BACK TO BACK LADDER PULLS
 - LOCKS
 - BOTTOM TRACK WITH FIXED SILL GUIDE
 - ACOUSTIC BOTTOM TRACK SEAL WITH ADJUSTABLE SILL GUIDE

AD SYSTEMS HIGH PERFORMANCE BARN DOORS
FLUSH WOOD SINGLE SLIDER - ELEVATIONS & DETAILS
CLEAR OPENING WIDTHS SHOWN: 36"
JAMB SYSTEM AVAILABLE: 4 7/8"

AD SYSTEMS
 HIGH PERFORMANCE DOORS
 2201 100th Street SW
 Everett, WA 98204
 425.374.1360
 1.855.328.6011
 www.specADsystems.com

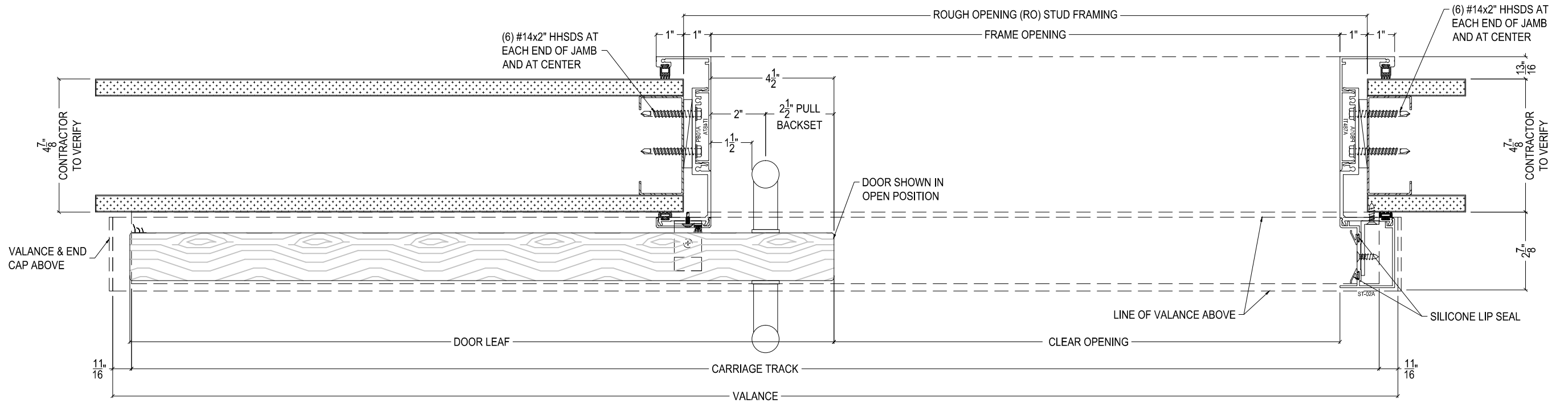
DATE:	10/2016
SCALE:	3" = 1'-0"
DRAWN:	CT
SHEET NUMBER	4.875-D(1)

4 7/8" SYSTEM | OPEN LEFT



1 JAMB @ SILL GUIDE
DOOR SHOWN IN CLOSED POSITION

2 JAMB @ PULL SIDE
DOOR SHOWN IN CLOSED POSITION



1A JAMB @ SILL GUIDE
DOOR SHOWN IN OPEN POSITION

2A JAMB @ PULL SIDE
DOOR SHOWN IN OPEN POSITION

- OPTIONS:**
- 1" DIA. BACK TO BACK LADDER PULLS
 - LOCKS
 - BOTTOM TRACK WITH FIXED SILL GUIDE
 - ACOUSTIC BOTTOM TRACK SEAL WITH ADJUSTABLE SILL GUIDE

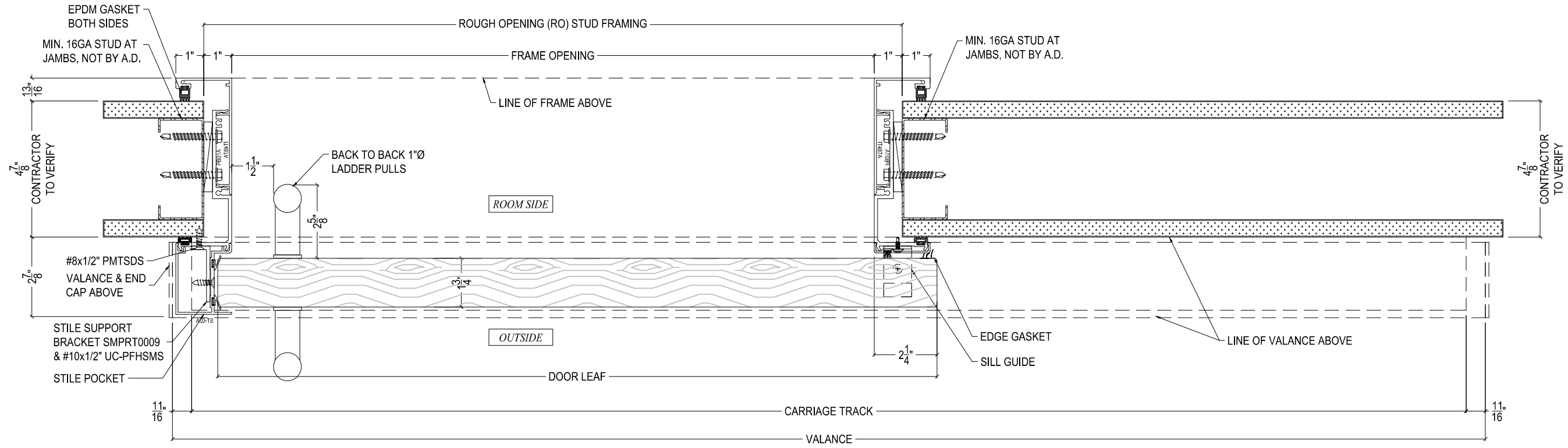
AD SYSTEMS HIGH PERFORMANCE BARN DOORS
FLUSH WOOD SINGLE SLIDER - ELEVATIONS & DETAILS
CLEAR OPENING WIDTHS SHOWN: 36"
JAMB SYSTEM AVAILABLE: 4 7/8"



2201 100th Street SW
 Everett, WA 98204
 425.374.1360
 1.855.328.6011
 www.specADsystems.com

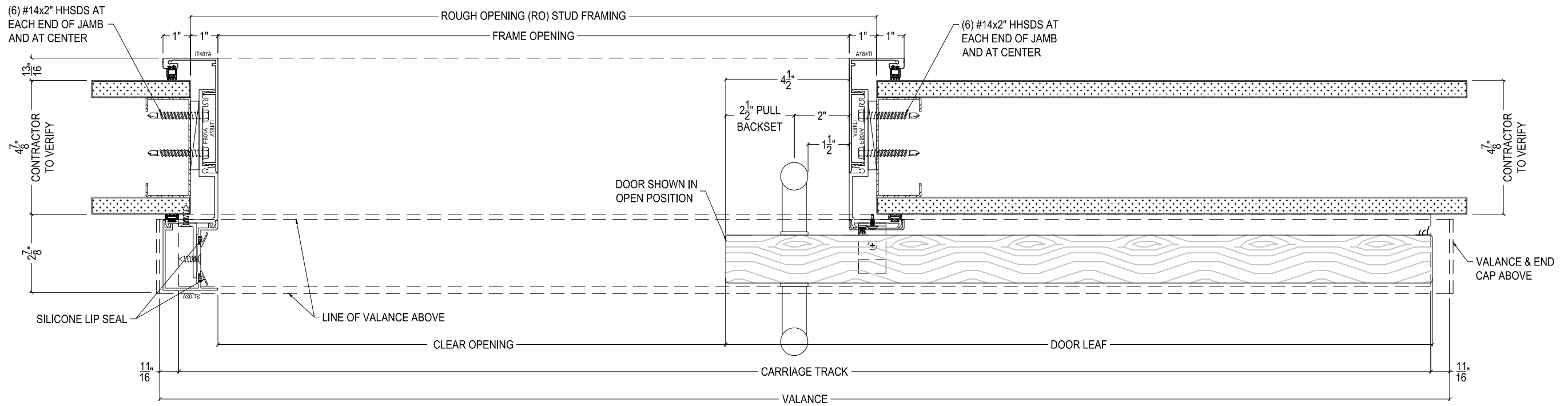
DETAILS
 DATE: 10/2016
 SCALE: 3" = 1'-0"
 DRAWN: CT
 SHEET NUMBER
4.875-D(2)

4 7/8" SYSTEM OPEN RIGHT



1 JAMB @ PULL SIDE
DOOR SHOWN IN CLOSED POSITION

2 JAMB @ SILL GUIDE
DOOR SHOWN IN CLOSED POSITION



1A JAMB @ PULL SIDE
DOOR SHOWN IN OPEN POSITION

2A JAMB @ SILL GUIDE
DOOR SHOWN IN OPEN POSITION

- OPTIONS:**
- 1" DIA. BACK TO BACK LADDER PULLS
 - LOCKS
 - BOTTOM TRACK WITH FIXED SILL GUIDE
 - ACOUSTIC BOTTOM TRACK SEAL WITH ADJUSTABLE SILL GUIDE

AD SYSTEMS HIGH PERFORMANCE BARN DOORS
FLUSH WOOD SINGLE SLIDER - ELEVATIONS & DETAILS
CLEAR OPENING WIDTHS SHOWN: 36"
JAMB SYSTEM AVAILABLE: 4 7/8"

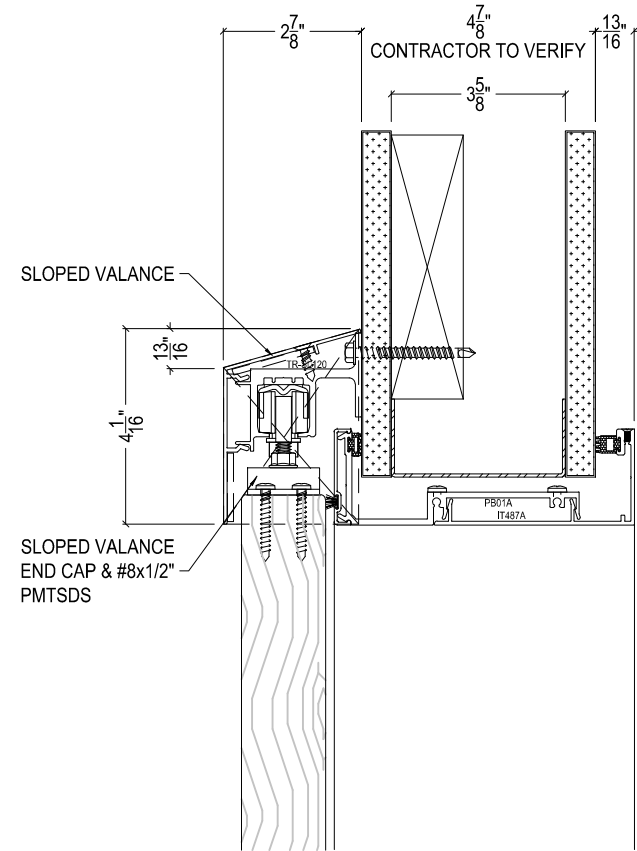


HIGH PERFORMANCE DOORS
2201 100th Street SW
Everett, WA 98204
425.374.1360
1.855.328.6011
www.specADsystems.com

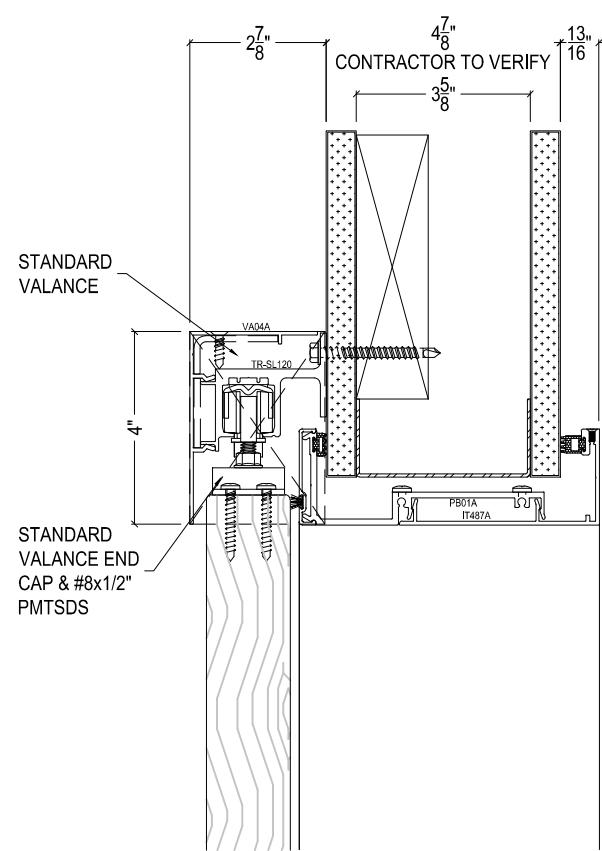
DETAILS
DATE: 10/2016
SCALE: 3" = 1'-0"
DRAWN: CT

SHEET NUMBER
4.875-D(3)

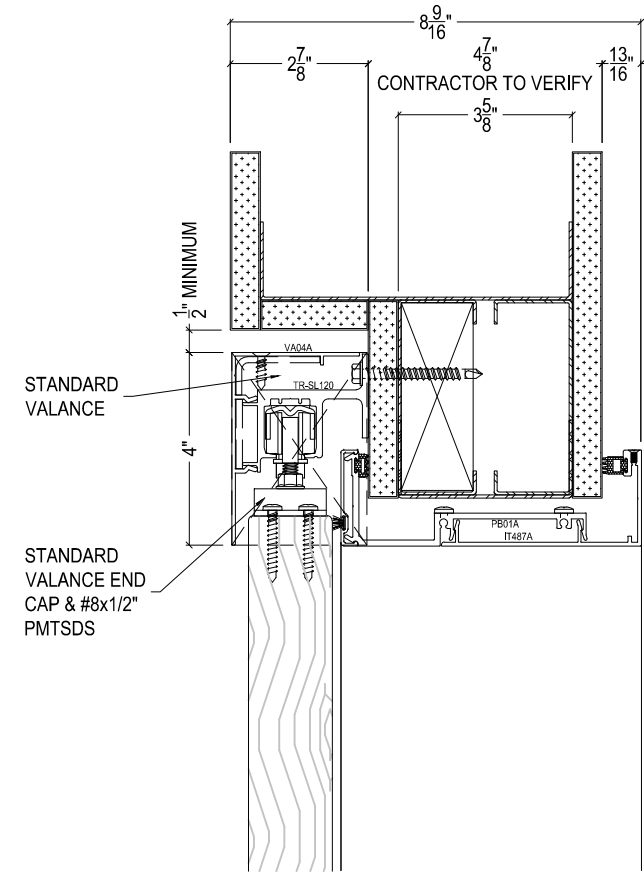
4 7/8" SYSTEM WALL FRAMING OPTIONS



1a SLOPED VALANCE OPTION



A STANDARD WALL CONSTRUCTION



B OPTIONAL WALL CONSTRUCTION TO GIVE "FLUSH LOOK"

AD SYSTEMS HIGH PERFORMANCE BARN DOORS

FLUSH WOOD SINGLE SLIDER - ELEVATIONS & DETAILS

CLEAR OPENING WIDTHS SHOWN: 36"
JAMB SYSTEM AVAILABLE: 4 7/8"

OPTIONS:

- 1" DIA. BACK TO BACK LADDER PULLS
- LOCKS
- BOTTOM TRACK WITH FIXED SILL GUIDE
- ACOUSTIC BOTTOM TRACK SEAL WITH ADJUSTABLE SILL GUIDE



HIGH PERFORMANCE DOORS

2201 100th Street SW
Everett, WA 98204
425.374.1360
1.855.328.6011
www.specADsystems.com

DETAILS
DATE: 10/2016
SCALE: 3" = 1'-0"
DRAWN: CT

SHEET NUMBER
4.875-D(4)

AD5000 LOCKING HARDWARE, MORTISE - DEADBOLT		INTERIOR / EXTERIOR COMPONENTS (MORTISE BODY / EXTERIOR / INTERIOR/TRIM)		FUNCTIONALITY / OPTIONS		
AD5450P (Office) Deadbolt Cylinder & Thumbturn, with Ladder Pulls						<p>User turns key from outside to lock or unlock door. User operates fixed handle on outside to slide door open. User operates fixed handle inside to slide door closed. User locks door inside by turning thumbturn. User turns thumbturn inside to unlock door. User operates fixed handle on inside to slide door open.</p> <p>Also available with Small Format Interchangeable Core (SFIC) cylinder housing and Full Size Interchangeable Core (FSIC) cylinder housing. Finish: US32D Standard, other finishes available</p>
AD5440I (Privacy) Deadbolt with Indicator & Thumbturn, with Ladder Pulls						<p>User operates fixed handle from outside to slide door open. User operates fixed handle inside to slide door closed. User locks or unlocks door from inside by turning thumbturn, and indicator on outside indicates Occupied (Red) or Vacant (Green). User operates fixed handle from inside to slide door open. Indicator allows unlock from outside in event of emergency.</p> <p>Finish: US32D Standard, other finishes available</p>
AD5440 (Privacy) Deadbolt with Cointurn & Thumbturn, with Ladder Pulls						<p>User operates fixed handle from outside to slide door open. User operates fixed handle inside to slide door closed. User locks or unlocks door from inside by turning thumbturn. User operates fixed handle from inside to slide door open. Coin override allows unlock from outside in event of emergency.</p> <p>Finish: US32D Standard, other finishes available</p>
AD5440SI (Privacy) Deadbolt with SECTIONAL Indicator & Thumbturn, with Ladder Pulls						<p>User operates fixed handle from outside to slide door open. User operates fixed handle inside to slide door closed. User locks or unlocks door from inside by turning thumbturn, and indicator on outside indicates Occupied or Vacant. User operates fixed handle from inside to slide door open. Indicator coin override allows unlock from outside in event of emergency.</p> <p>Also available with Standard Conventional cylinder on exterior. Finish: US32D Standard, other finishes available</p>

AD6000 LOCKING HARDWARE, MORTISE - SELF LATCHING W/ SINGLE ACTION EGRESS

AD6450P (Office) Lever Lock with Cylinder & Thumbturn, with Levers						<p>User turns key from outside to lock or unlock door. User rotates lever from outside to slide door open. User rotates lever from inside to slide door closed. User locks door inside by turning thumbturn. User rotates lever from inside to automatically release lock (single action egress). User slides door open.</p> <p>Also available with Small Format Interchangeable Core (SFIC) cylinder housing and Full Size Interchangeable Core (FSIC) cylinder housing. Finish: US32D Standard, other finishes available</p>
AD6440I (Privacy) Lever Lock with Indicator & Thumbturn, with Levers						<p>User rotates lever from outside to slide door open. User rotates lever from inside to slide door closed. User locks door inside by turning thumbturn. User rotates lever from inside to automatically release lock (single action egress). User slides door open. Indicator allows unlock from outside in event of emergency.</p>
AD6440 (Privacy) Lever Lock with Cointurn Override & Thumbturn, with Levers						<p>User rotates lever from outside to slide door open. User rotates lever from inside to slide door closed. User locks door inside by turning thumbturn. User rotates lever from inside to automatically release lock (single action egress). User slides door open. Coin override allows unlock from outside in event of emergency.</p>
AD6440SI (Privacy) Lever Lock with SECTIONAL Indicator & Thumbturn, with Levers						<p>User rotates lever from outside to slide door open. User operates lever inside to slide door closed. User rotates thumbturn to lock outside lever. Indicator on outside shows room is occupied/Vacant. User rotates lever from inside to automatically release lock (single action egress). User slides door open.</p> <p>Also available with Standard Conventional cylinder on exterior. Finish: US32D Standard, other finishes available</p>
AD6010 (Passage) Lever Lock Passage Latch, with Levers						<p>Latchbolt retracted by lever from either side at all times. Inside lever always free for immediate egress.</p>



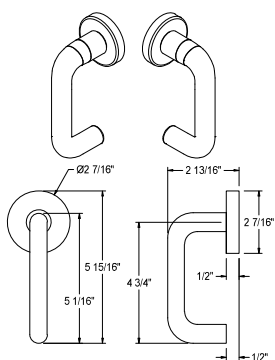
Innovation behind every door
www.specADsystems.com
1.425.374.1360

HARDWARE SELECTION GUIDE
AD5000 & AD6000 LOCKING HARDWARE
AD Systems

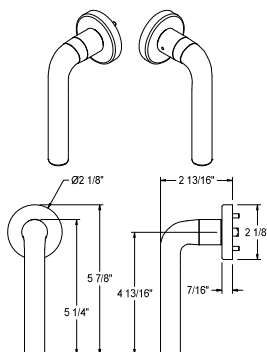
LEVER PULLS:

AD-012021

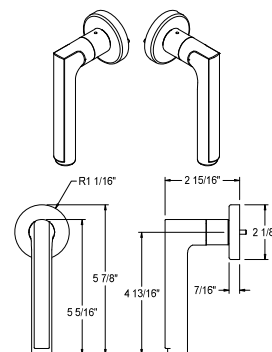
Schlage 03 Lever
(HDW0202)



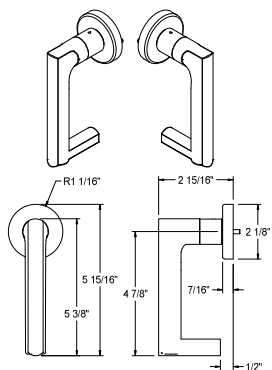
Schlage 02 Lever
(HDW0273)



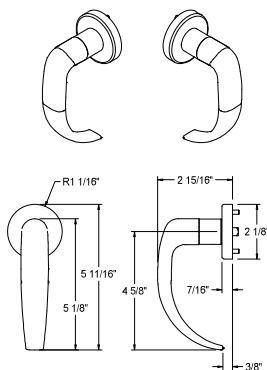
Schlage Latitude
(HDW0274)



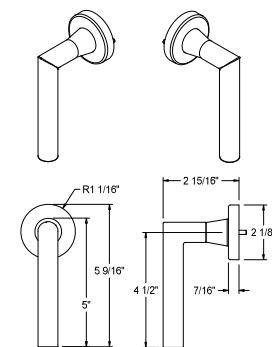
Schlage Longitude
(HDW0275)



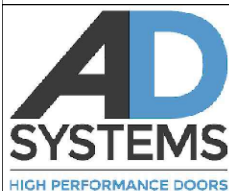
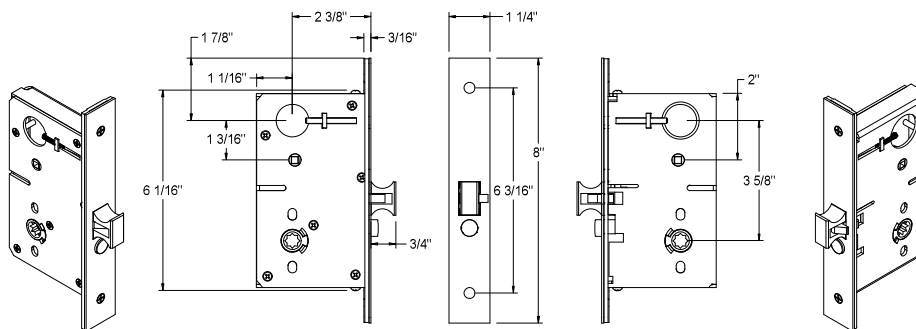
Schlage 17 Lever
(HDW0276)



Schlage M52 Lever
(HDW0277)



AD6000 LOCKING HARDWARE
MORTISE - PASSAGE
(HDW0195)



Innovation behind every door
www.specADsystems.com
1.425.374.1360

SELF LATCHING LOCK WITH SINGLE ACTION EGRESS
Hardware Group: AD6000 Locking Hardware
List of Components, Sheet 2 of 2