

TARTAR TALKS

**Keith Curry, Ed.D.
President/CEO
Compton College**

November 19, 2019





COMPTON COLLEGE 2024



Tartar Talks – November 19, 2019

Compton College 2024

- ✓ Implement College Promise Programs with Compton, Lynwood, and Paramount Unified School Districts by fall 2019
- ✓ Implement the Tartar Focused & Directed Pathways to Completion by 2019
 - 6,400 Full-Time Equivalent Students (FTES)
 - Improve overall student completion rates by 2022-2023
 - Compton College wins an [Aspen Prize for Community College Excellence](#) by 2024

Strategic Initiatives for 2017-2024

1. **Access and Completion:** Compton College will improve enrollment, retention, and completion rates for our students.
2. **Student Success:** Compton College will support the success of all students to meet their education and career goals.
3. **Innovation:** Compton College will enhance the success of students through the use of technology.
4. **Workforce Development:** Compton College will offer excellent programs that lead to certificates and degrees in allied health and technical fields to supply the needed employees for the prevailing job industry.
5. **Partnerships:** Compton College will establish productive partnerships in the community and with the K-12 schools.

2019-2020 Compton College Goals

1. Implement Tartar Completion by Design to ensure all students complete more quickly with less units, transfer, and are employed in their field of study.
2. Maintain Student Enrollment at 5,980 Full-Time Equivalent Students (FTES) for the 2019-2020 year.
3. Complete all Compton College Accreditation efforts.
4. Continue to improve facilities to support student learning and success.
5. Continue to develop and enhance partnerships with schools, colleges, universities, businesses, and community-based organizations to respond to the educational, workforce training, and economic development need.
6. Create a stronger sense of connection among employees and students and the college.



TARTAR COMPLETION BY DESIGN



Tartar Talks – November 19, 2019

Tartar Completion by Design



CONNECTION
Initial Interest through
Submission of Application

ENTRY
Enrollment through
Completion of
"Gatekeeper" Courses

PROGRESS
Entry into Course of Study
through Completion of 75%
of Requirements

COMPLETION
Complete Course of Study
through Earning a Credential
with Labor Market Value

TRANSITION
Movement to Four-Year
University or to Workplace
with Living Wage

2019-2020 Follow-Up Items:

1. Implement Compton College Welcome Week Activities – ***Implemented***
2. Improve Campus Signage at Compton College – ***In Progress***
3. Revise the Compton College Communications Guide and Processes – ***In Progress***
4. Establish Student Commons Across Campus
5. Create a Compton College Mobile Application – ***Implemented***

2019-2020 Follow-Up Items:

6. Examine the College's Hours of Operation – ***In Progress***
7. Implement Career Services for Students by Guided Pathway Division
8. Childcare for Students and Potential Students – ***In Progress***
9. Fully Implement OER Campuswide by fall 2021
10. Revise the Compton College Student Program Maps – ***In Progress***

Tartar Success Team Implementation

TARTAR SUCCESS TEAMS

Dean

Division Chair

Faculty (by discipline within a meta-major)

Guided Pathway Counselor

Academic Counselor

Instructional Coordinator

Student Services Advisor

Student Support Services (Admissions & Records, EOPS/CARE, CalWORKs, Special Resource Center, Health Center, and Financial Aid/ Veteran Services)

Student Success Center

Strong Workforce/Adult Education

Research & Planning

Professional Development Faculty Liaison

Campus Police Liaison

Health Center Liaison





COMPTON COLLEGE FIVE-YEAR ENROLLMENT PROJECTIONS



Tartar Talks – November 19, 2019

Compton College Five-Year Enrollment Projection

Year	2018-19	2019-20	2020-21	2021-22	2022-23
Funded FTES	5,980	5,980	5,980	5,980	5,980
Potential FTES @100% Fill Rate	6,184	5,674	6,226	6,413	6,605
Target FTES (Fill Rate)		4058 (70%)	4673 (75%)	5130 (80%)	5610 (85%)
Fall		1,702	1,981	2,175	2,378
Winter		313	341	375	410
Spring		1,535	1,809	1,986	2,171
Summer		508	542	595	651

Compton College Reported FTES 2018-19

Year	2018-19	2019-20	2020-21	2021-22	2022-23
Funded FTES	5,980	5,980	5,980	5,980	5,980
Potential FTES @100% Fill Rate	6,184	5,674	6,226	6,413	6,605
Reported FTES	4,494	4058 (70%)	4673 (75%)	5130 (80%)	5610 (85%)
Fall	2,226	1,702	1,981	2,175	2,378
Winter	281	313	341	375	410
Spring	1,938	1,535	1,809	1,986	2,171
Summer ¹	(608-559) 49	508	542	595	651

¹608 FTES earned in Summer 2018 reduced by 559 due to payback for borrowing in prior year.

Compton College Course Sections Offered

Year	2018-19	2019-20	2020-21	2021-22	2022-23
Sections Offered	1,455	1,335	1,465	1,509	1,554
Fall	575	560	621	640	659
Winter	95	103	107	110	114
Spring	583	505	567	584	601
Summer	202	167	170	175	180

Winter/Spring 2020 Course Section Offering by Guided Pathway Division

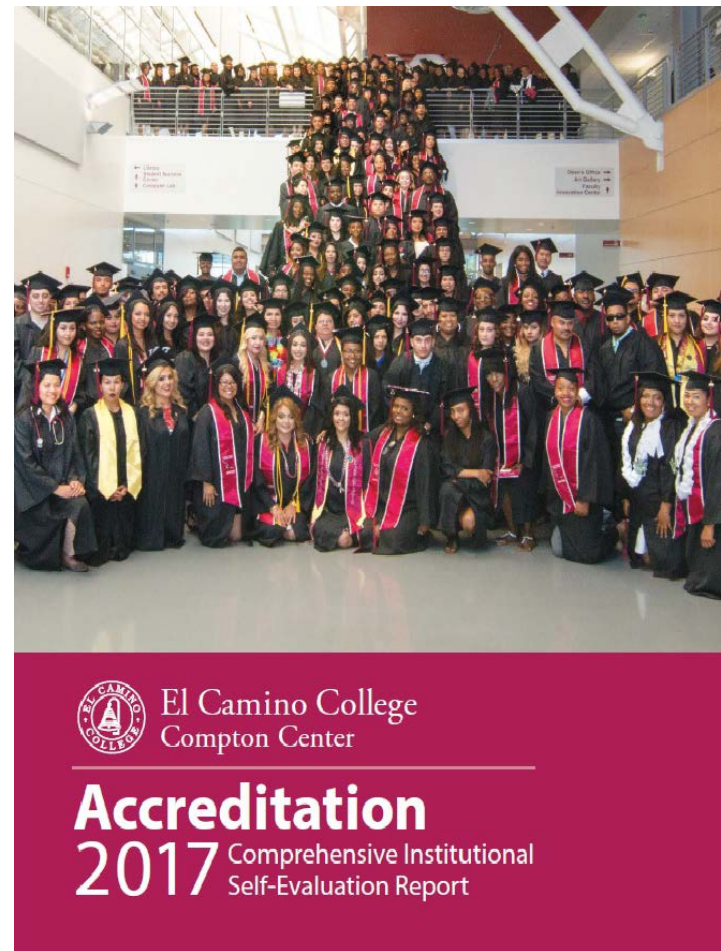
Guided Pathway Division	Winter 2020	Spring 2020
Business and Industrial Studies	2	46
Social Sciences	20	103
Health and Public Services	16	82
Science Technology Engineering and Math	35	122
Fine Arts, Communications and Humanities	30	152
Total	103	505

Compton College Initiatives to Increase Enrollment – FTES and Course Sections

	2018-19		2019-20		2020-21		2021-22		2022-23	
Initiative	FTES	Sects.	FTES	Sects.	FTES	Sects.	FTES	Sects.	FTES	Sects.
Early College High School Program	62	18	54	18	57	18	61	18	65	18
Cosmetology	167	29	183	40	202	44	211	44	220	44
Dual Enrollment (AB-288)	--	--	76	25	86	27	98	29	112	31
Afternoon College Program	107	38	97	32	108	34	122	36	137	38
CAMS	--	--	92	30	96	30	102	30	108	30
Adult Education - CTE	--	--	20	4	40	8	50	10	60	12
Adult Education - IGETC	--	--	--	--	38	12	40	12	43	12
Totals	336	85	522	149	627	173	684	179	745	185

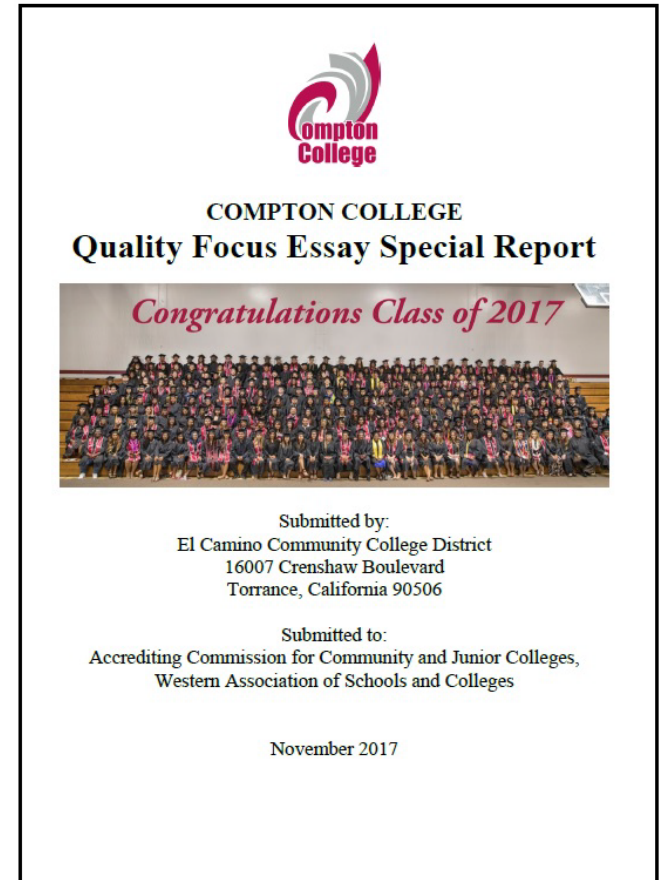
2017 Evaluation Team Recommendations and ISER Actionable Items

- Evaluation Team Recommendations: 14
- Compton College Self-Identified Actionable Items (ISER): 10
- Compton College Institutional Self-Evaluation Actionable Items



Quality Focus Essay Actionable Items

- QFE Section One (Integrated Planning) Actionable Items: 12
- QFE Section Two (Distance Education) Actionable Items: 9
- Compton College QFE Actionable Items (In-Development)



Midterm Report Timeline: Fall 2019

Date	Action
October 2019	Accreditation Standard Committees will: <ul style="list-style-type: none">- Begin developing draft Accreditation Midterm Report responses- Collect evidence to support the draft Accreditation Midterm Report responses
December 2019	Accreditation Standard Committees will: <ul style="list-style-type: none">- Review and discuss updated draft of Accreditation Midterm Report responses- Continue collecting evidence to support the Accreditation Midterm Report responses



COLLABORATIVE GOVERNANCE



Collaborative Governance

Definition of Collaborative Governance:

Decisions at Compton College are the result of the participation and collaboration among all constituent groups, including the Board of Trustees, administration, faculty, staff, and students. Collaborative Governance at Compton College is the cornerstone necessary to achieve the mission, vision, and strategic initiatives of our institution. Collaborative Governance ensures diverse and creative input, transparency, and accountability so that decisions are made that will drive student success at Compton College.

Statement of Civility & Mutual Respect - Draft

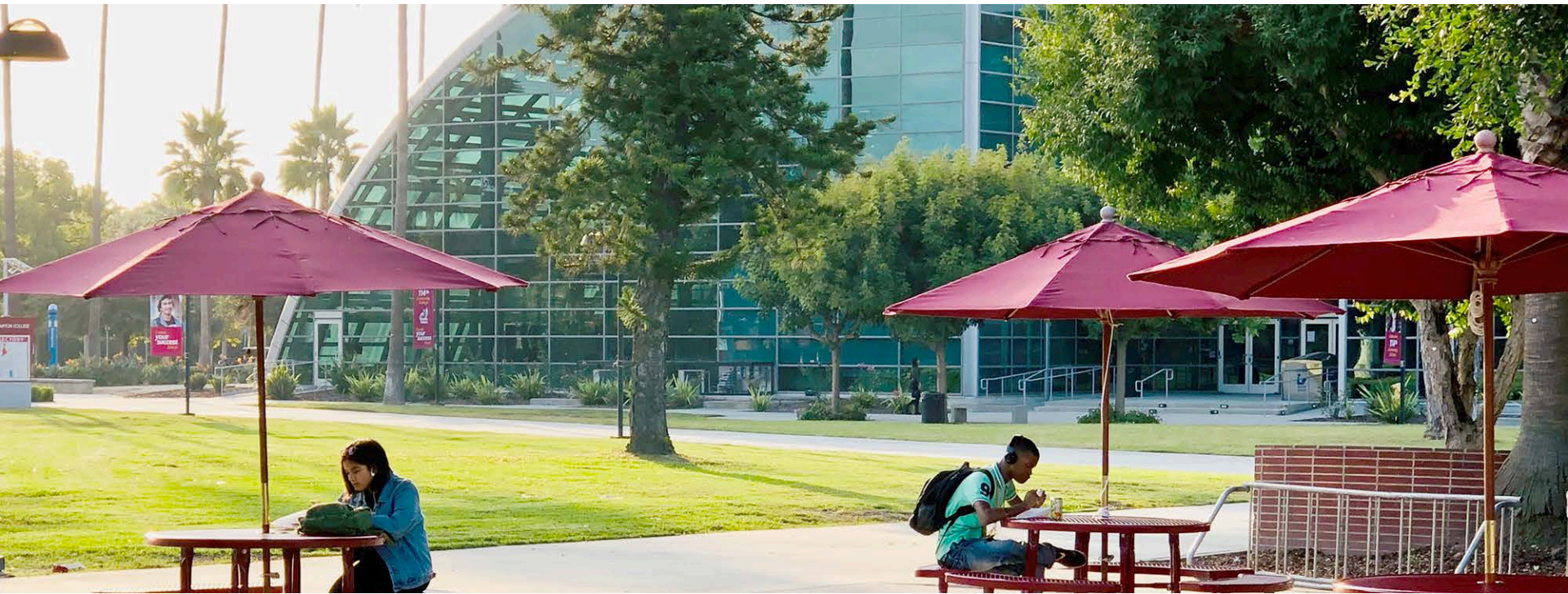
The manner in which we interact with one another is critical to cultivating and maintaining a meaningful and effective intellectual environment.

- Compton College is committed to the highest standards of academic and ethical integrity, acknowledging that respect for self and others is the foundation of educational excellence. As such, we will cultivate an environment of mutual respect and responsibility.
- Compton College encourages a climate of respect and inclusiveness that welcomes and embraces community members with diverse backgrounds and life experiences; deliberately seeks multiple perspectives; and supports the free and open exchange of ideas and civil discourse.

Statement of Civility & Mutual Respect - Draft

- Compton College uses contributions of the community to promote diversity, creativity, accountability, and transparency. Through Collaborative Governance, all constituent groups work together, in good faith, to make decisions related to policies, procedures, and practices for the benefit of the students and community that we serve.

Our community can only continue to thrive when we approach each interaction and conversation with an open mind and when each member can contribute fully. Civility facilitates professional growth and achievement and promotes an environment where each person can reach his or her full potential.



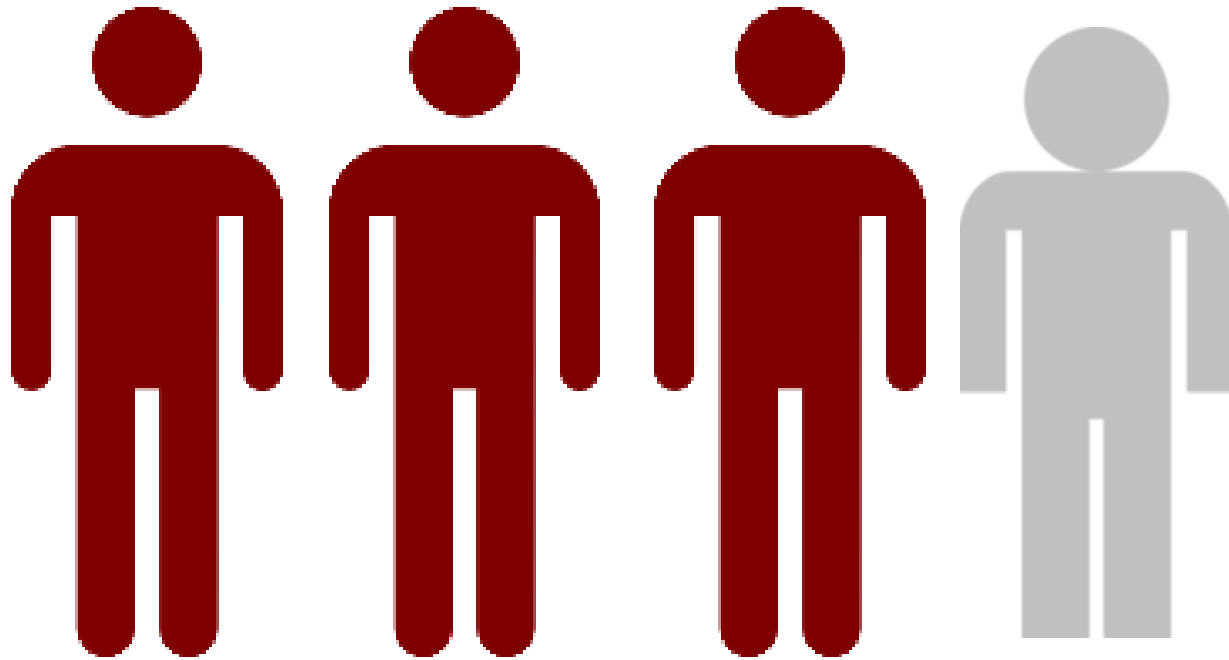
STUDENT RESIDENTIAL HOUSING

Large Scale of Insecurity

Compton College outpaces other community colleges in housing and food insecurity.

	Food Insecurity	Housing Insecurity	Homelessness
Compton College	59%	68%	18%
Average of 2-year colleges	50%	60%	19%

3 out of 4 students face some food and/or housing insecurity



Food Insecure

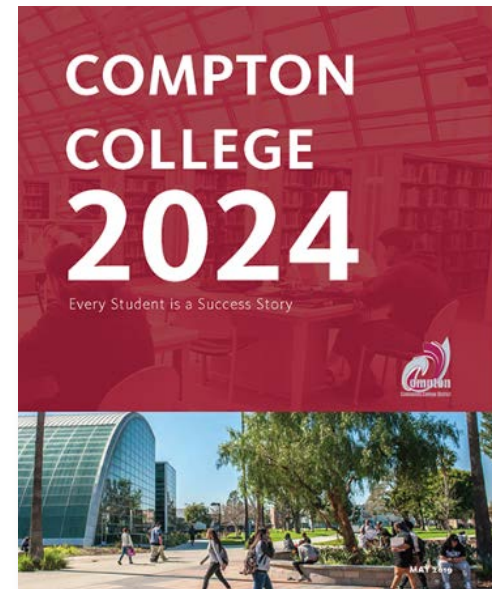
Several student groups stand out as having high levels of food insecurity.

- 85% suffer from a chronic illness
- 85%+ of those 26 or older
- 82% of former foster youth
- 80% of Southeast Asian students
- 77% of students with children
- 77% of those who are employed
- 75% of black/African American students
- 70% of women

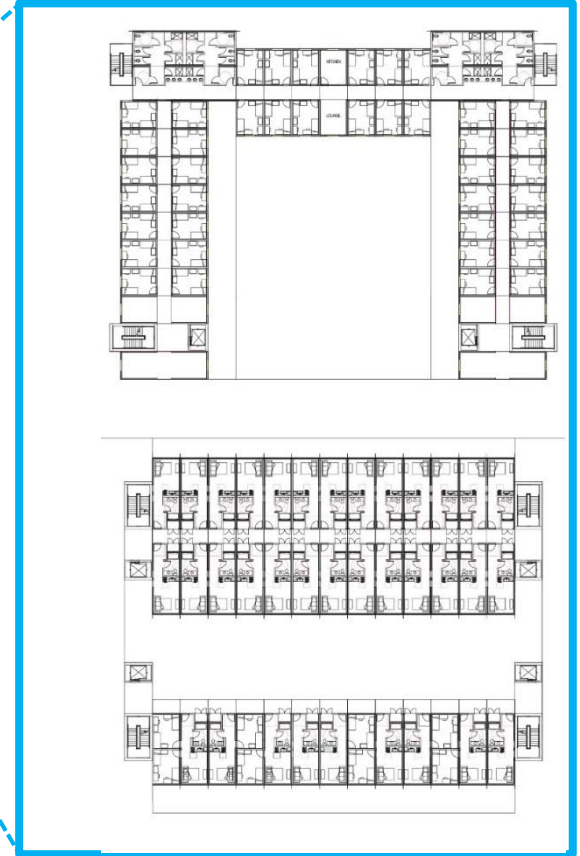
Compton College 2024

Compton College's Vision

- Merging current and future capacities, attributes, and outcomes to deliver on its mission where diverse students are supported to pursue and attain student success.



Compton College 2024



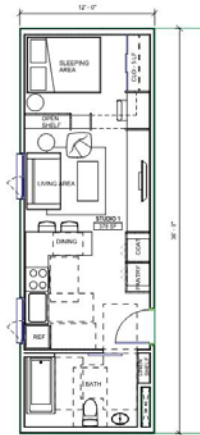
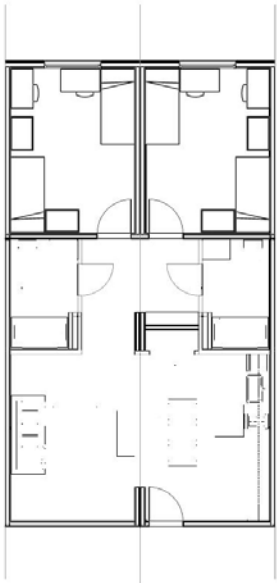
Campus Engagement



Conceptualizing

Modules

COMBINATORY KIT OF PARTS_DORM SUITES / STUDIOS



Conceptualizing

Modules

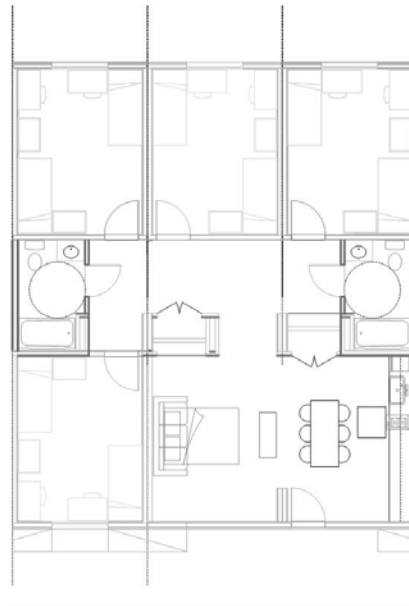
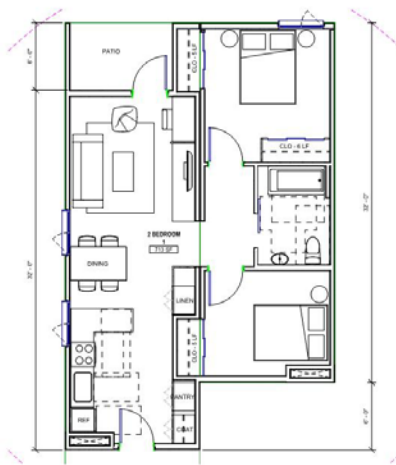
COMBINATORY KIT OF PARTS_1 BR_RA UNITS



Conceptualizing

Modules

COMBINATORY KIT OF PARTS_2BR_FAMILY UNITS / MACRO UNITS



Conceptualizing

Pre-Fabricated Student Residential Housing Design

Multi-faceted Project

- Goal: 540 beds
- Phase I: 100 Beds by 2022

Sample Housing

- Traditional dormitory-style (Singles, Doubles, Triples, Quadruples)
- Family Housing

Demographic

- Students, students with families, nontraditional students, and future Compton College Faculty

Faculty will serve as **preceptors**, living onsite for up to two academic years, potentially attracting diverse pool of applicants for tenure-track faculty positions.

Current Partners



FOUNDATION *for* CALIFORNIA
COMMUNITY COLLEGES



Gensler

Other Partnerships

- Jovenes Inc.
 - Dedicated to helping homeless youth develop pathways for personal and professional growth through their college experiences.
- The Coalition for Responsible Community Development (CRCDD)
 - Sustaining, coordinating, and improving local planning, development and community services that address the needs of low-income residents in South LA.
- LINC Housing
 - Building and preserving affordable housing, and being a catalyst for community improvement.



Next Steps

- Research and Development Phase for Cost of Prefabricated Units
- With assistance from the Foundation for California Community Colleges, generate a statewide Request for Proposal (RFP) with piggy-back contract language for preliminary Division of State Approved (DSA) prefabricated models.
- The Compton College concept could be the model for other California Community Colleges interested in student residential housing.
- Compton College is currently working on a timeline for implementation and completion.

2020 Commencement

- Friday, June 12, 2020
- 11:00 a.m. Ceremony in the Stadium
- 12:30 p.m. Reception in the Gymnasium

Thank You!

QUESTIONS?

Keith Curry, Ed.D.
President/CEO
Compton College
kcurry@compton.edu

