

SHEET 1 & 9	SHEET 2 & 10
SHEET 3 & 11	SHEET 4 & 12
SHEET 5 & 13	SHEET 6 & 14
SHEET 7 & 15	SHEET 8 & 16

VICINITY MAP
N.T.S.

UTILITY NOTES

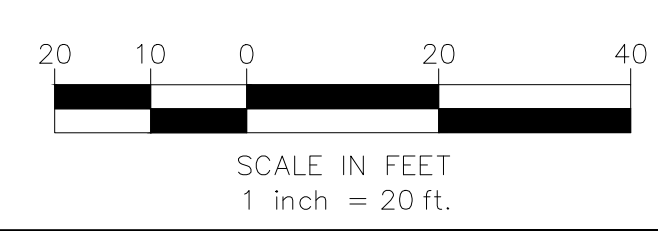
- FACILITIES (UTILITY LINES) SHALL BE LOCATED AND MARKED PRIOR TO EXCAVATION. CALL 811 FOR DIG ALERT.
- CONTRACTOR SHALL HAND-EXPOSE TO A POINT OF NO CONFLICT 24" ON EITHER SIDE OF THE UNDERGROUND FACILITY, REGARDLESS OF THE ESTIMATED DEPTH.
- DEPTHS SHOWN ARE APPROXIMATE. ESTIMATED DEPTHS ARE FROM THE GROUND SURFACE TO THE CENTER OF THE FACILITY, INVERT OF WASTE LINES, OR TO THE FACILITY TRACER WIRE. DEPTH ESTIMATES SHOULD BE USED WITH CAUTION AND MAY VARY ALONG THE LENGTH OF THE FACILITY.
- THE SCOPE OF THIS SURVEY DOES NOT INCLUDE FACILITY SIZE OR NUMBER OF CONDUIT IN MULTIPLE CONDUIT RUNS. IRRIGATION LINES ARE NOT INCLUDED IN THIS SURVEY.
- THE BACKGROUND SITE PLAN USED IN PREPARING THIS MAP WAS PREPARED BY OTHERS AND PROVIDED TO ULTRA ENGINEERING BY THE CLIENT. ULTRA ENGINEERING MAKES NO REPRESENTATION AS TO THE ACCURACY OF THE PLAN.
- IN THE EVENT THE INFORMATION SHOWN IN THIS PLAN VARIES FROM THE ACTUAL SITE CONDITIONS, ULTRA ENGINEERING SHALL BE NOTIFIED WITHIN 24 HOURS AFTER DISCOVERY OF THE CONFLICT.

LEGEND

- ELECTRICAL — E —
- TRAFFIC SIGNAL — TS —
- SITE LIGHT — SL —
- RAILROAD SIGNAL — RR —
- GAS — G —
- TEL/COMM — TEL —
- INTERCOM — IC —
- FIRE ALARM — FA —
- FIBER OPTIC — FO —
- TELEVISION — TV —
- WATER — W —
- SEWER — SS —
- STORM DRAIN — SD —
- POSSIBLE LINE LOCATION (UNK) — U —
- FIRE HYDRANT
- METER/PULL BOX
- VAULT
- VALVE
- SITE LIGHT
- STREET LIGHT
- UNVERIFIED PATH
- GAS MANIFOLD
- WATER MAIN
- BACKFLOW
- OFFSET FROM REFERENCE — 10'-8"
- DEPTH FROM SURFACE DIA. OF PIPE — 1'-6"
- NC = NOT CONNECTED
- NLP = NO LONGER PUSH
- NT = NO TONE
- EOS = END OF SIGNAL
- NA = NO ACCESS
- FDC = FIRE DEPARTMENT CONNECTION
- GPR = GROUND PENETRATING RADAR LOCATED LINE

MATCHLINE SEE SHEET 2 & 10

MATCHLINE SEE SHEET 3 & 11



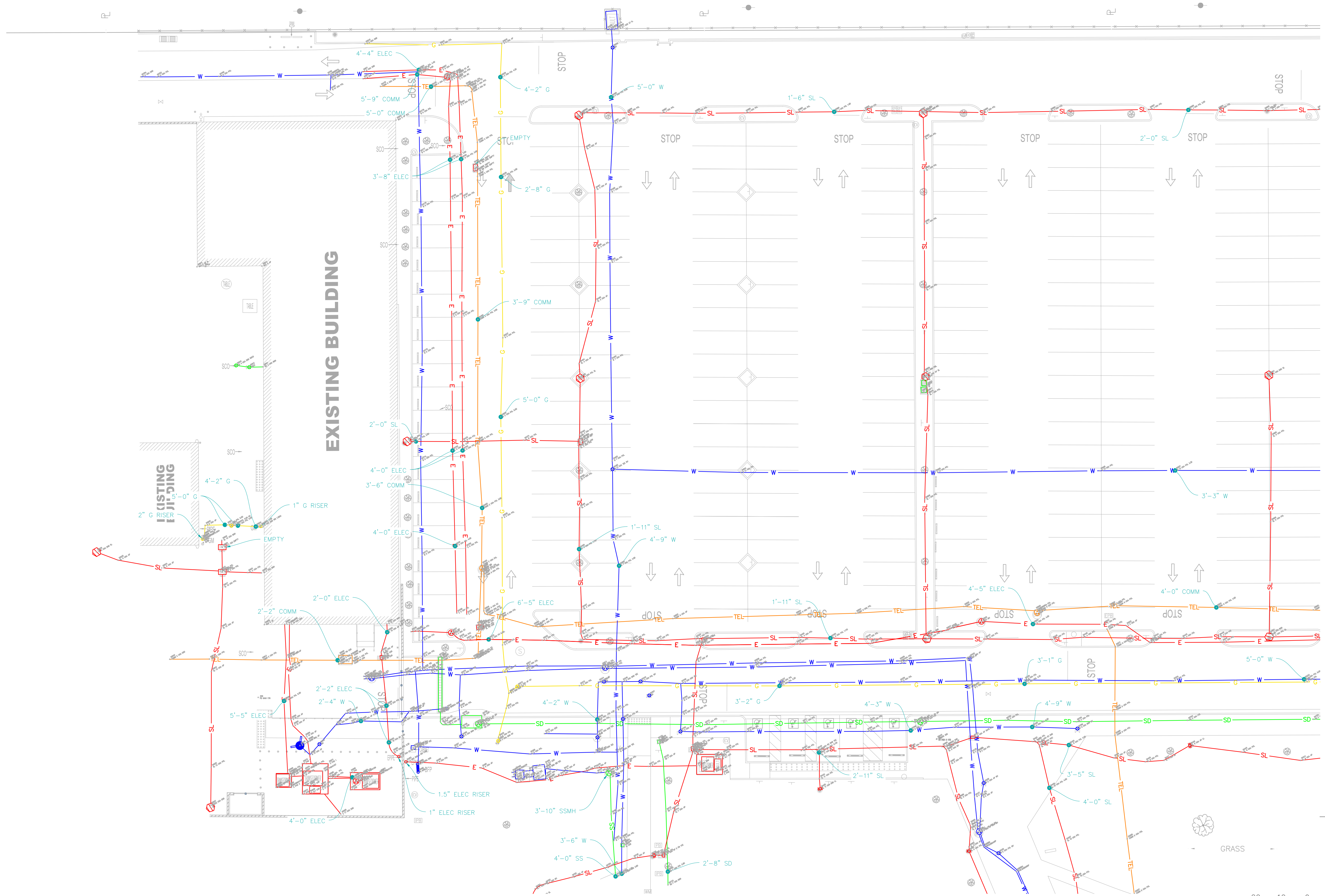
DATE LOCATED:	3/6/23
DRAWN BY/DATE:	3/17/23
TECHNICIAN:	AZ
CHECK BY/DATE:	AZ
QC CHECKED BY/DATE:	HZ
SCALE:	1" = 20'
PROJECT NO.:	..

NO	DATE	DESCRIPTION

PARTIAL UNDERGROUND UTILITY MAP FOR:
VCA ENGINEERING
 1041 S GARFIELD AVE, SUITE 210, ALHAMBRA, CA 91801
COMPTON COMMUNITY COLLEGE
 1111 E ARTESIA BLVD, COMPTON, CA 90221

NOTES:
 The services provided by Ultra Engineering are for the use of the Client and for property owner of the responsibility of having to comply with California Government Code §44216-4216.9. It is expressly understood by the Client that Ultra Engineering services are not a substitute for compliance with California Code §44216-4216.9.

38005 FBELEY CT., WINCHESTER, CA 93296 | PHONE: 951-223-5552 | HTTP://WWW.ULTRAENGINEERING.COM



MATCHLINE SEE SHEET 1 & 9

MATCHLINE SEE SHEET 4 & 12

SHEET 1 & 9	SHEET 2 & 10
SHEET 3 & 11	SHEET 4 & 12
SHEET 5 & 13	SHEET 6 & 14
SHEET 7 & 15	SHEET 8 & 16

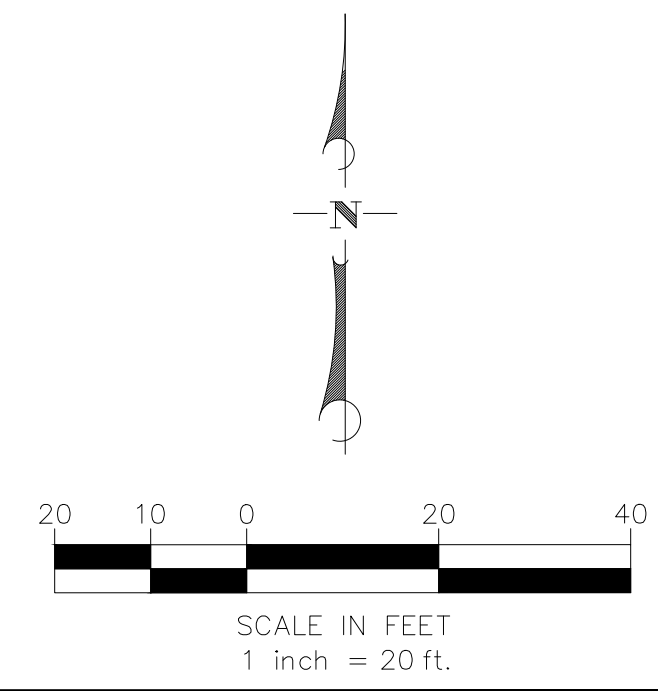
VICINITY MAP
N.T.S.

UTILITY NOTES

- FACILITIES (UTILITY LINES) SHALL BE LOCATED AND MARKED PRIOR TO EXCAVATION. CALL 811 FOR DIG ALERT.
- CONTRACTOR SHALL HAND-EXPOSE TO A POINT OF NO CONFLICT 24" ON EITHER SIDE OF THE UNDERGROUND FACILITY, REGARDLESS OF THE ESTIMATED DEPTH.
- DEPTHS SHOWN ARE APPROXIMATE. ESTIMATED DEPTHS ARE FROM THE GROUND SURFACE TO THE CENTER OF THE FACILITY, INVERT OF WASTE LINES, OR TO THE FACILITY TRACER WIRE. DEPTH ESTIMATES SHOULD BE USED WITH CAUTION AND MAY VARY ALONG THE LENGTH OF THE FACILITY.
- THE SCOPE OF THIS SURVEY DOES NOT INCLUDE FACILITY SIZE OR NUMBER OF CONDUIT IN MULTIPLE CONDUIT RUNS. IRRIGATION LINES ARE NOT INCLUDED IN THIS SURVEY.
- THE BACKGROUND SITE PLAN USED IN PREPARING THIS MAP WAS PREPARED BY OTHERS AND PROVIDED TO ULTRA ENGINEERING BY THE CLIENT. ULTRA ENGINEERING MAKES NO REPRESENTATION AS TO THE ACCURACY OF THE PLAN.
- IN THE EVENT THE INFORMATION SHOWN IN THIS PLAN VARIES FROM THE ACTUAL SITE CONDITIONS, ULTRA ENGINEERING SHALL BE NOTIFIED WITHIN 24 HOURS AFTER DISCOVERY OF THE CONFLICT.

LEGEND

- ELECTRICAL — E —
- TRAFFIC SIGNAL — TS —
- SITE LIGHT — SL —
- RAILROAD SIGNAL — RR —
- GAS — G —
- TEL/COMM — TEL —
- INTERCOM — IC —
- FIRE ALARM — FA —
- FIBER OPTIC — FO —
- TELEVISION — TV —
- WATER — W —
- SEWER — SS —
- STORM DRAIN — SD —
- POSSIBLE LINE LOCATION (UNK) — U —
- FIRE HYDRANT — [Symbol]
- METER/PULL BOX — [Symbol]
- VAULT — [Symbol]
- VALVE — [Symbol]
- SITE LIGHT — [Symbol]
- STREET LIGHT — [Symbol]
- UNVERIFIED PATH — [Symbol]
- GAS MANIFOLD — [Symbol]
- WATER MAIN — [Symbol]
- BACKFLOW — [Symbol]
- OFFSET FROM REFERENCE — [Symbol] 10'-8"
- DEPTH FROM SURFACE DIA. OF PIPE — [Symbol] 1'-6"
- NC = NOT CONNECTED
- NLP = NO LONGER PUSH
- NT = NO TONE
- EOS = END OF SIGNAL
- NA = NO ACCESS
- FDC = FIRE DEPARTMENT CONNECTION
- GPR = GROUND PENETRATING RADAR LOCATED LINE



DATE LOCATED: 3/6/23	TECHNICIAN: AZ	SHEET: 2 OF 16
DRAWN BY/DATE: 3/17/23	CHECK BY/DATE: HZ	SCALE: 1" = 20'
PROJECT NO.:		

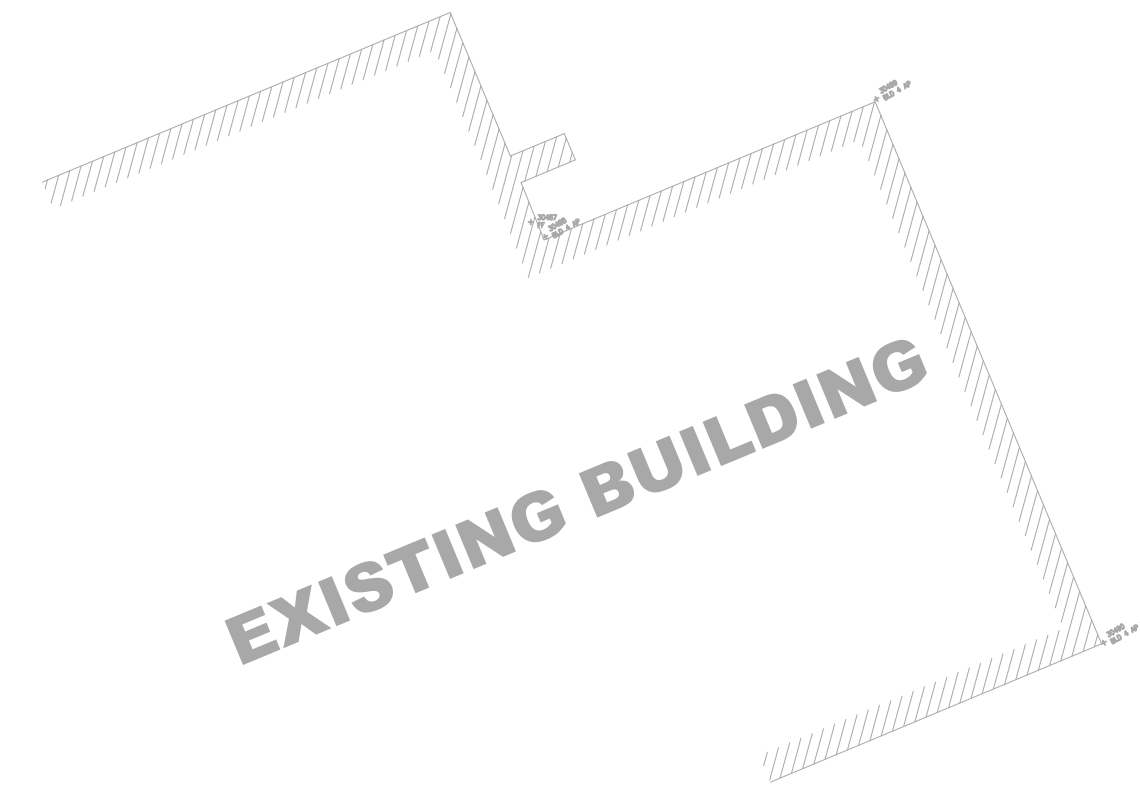
NO	DATE	DESCRIPTION

PARTIAL UNDERGROUND UTILITY MAP FOR:
VCA ENGINEERING
 1041 S GARFIELD AVE, SUITE 210, ALHAMBRA, CA 91801
COMPTON COMMUNITY COLLEGE
 1111 E ARTESIA BLVD, COMPTON, CA 90221

NOTES:
 The services provided by Ultra Engineering are for the use of the Client and for property owner of the responsibility of having the Government Code §4216-4216.9. It is expressly understood by the Client and Ultra Engineering that the Engineering services are not a substitute for compliance with California Code §4216-4216.9.



MATCHLINE SEE SHEET 1 & 9



MATCHLINE SEE SHEET 4 & 12

MATCHLINE SEE SHEET 5 & 13

SHEET 1 & 9	SHEET 2 & 10
SHEET 3 & 11	SHEET 4 & 12
SHEET 5 & 13	SHEET 6 & 14
SHEET 7 & 15	SHEET 8 & 16

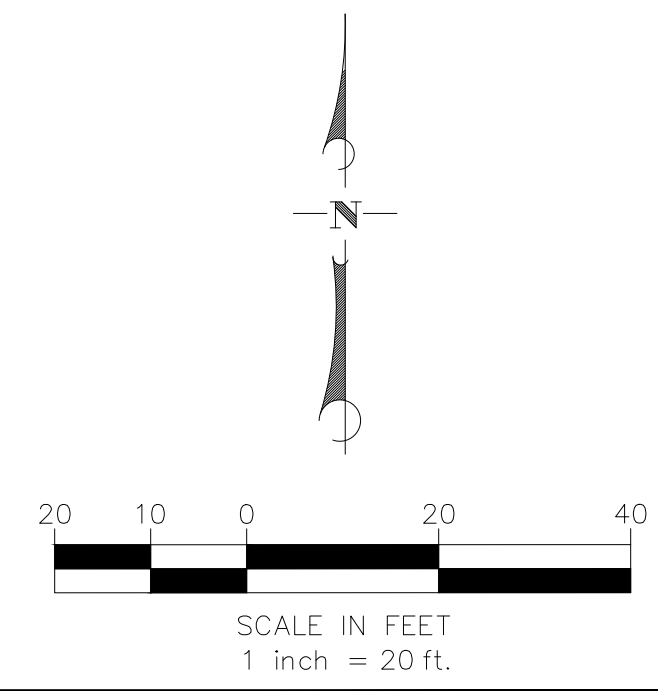
VICINITY MAP
N.T.S.

UTILITY NOTES

- FACILITIES (UTILITY LINES) SHALL BE LOCATED AND MARKED PRIOR TO EXCAVATION. CALL 811 FOR DIG ALERT.
- CONTRACTOR SHALL HAND-EXPOSE TO A POINT OF NO CONFLICT 24" ON EITHER SIDE OF THE UNDERGROUND FACILITY, REGARDLESS OF THE ESTIMATED DEPTH.
- DEPTHS SHOWN ARE APPROXIMATE. ESTIMATED DEPTHS ARE FROM THE GROUND SURFACE TO THE CENTER OF THE FACILITY, INVERT OF WASTE LINES, OR TO THE FACILITY TRACER WIRE. DEPTH ESTIMATES SHOULD BE USED WITH CAUTION AND MAY VARY ALONG THE LENGTH OF THE FACILITY.
- THE SCOPE OF THIS SURVEY DOES NOT INCLUDE FACILITY SIZE OR NUMBER OF CONDUIT IN MULTIPLE CONDUIT RUNS. IRRIGATION LINES ARE NOT INCLUDED IN THIS SURVEY.
- THE BACKGROUND SITE PLAN USED IN PREPARING THIS MAP WAS PREPARED BY OTHERS AND PROVIDED TO ULTRA ENGINEERING BY THE CLIENT. ULTRA ENGINEERING MAKES NO REPRESENTATION AS TO THE ACCURACY OF THE PLAN.
- IN THE EVENT THE INFORMATION SHOWN IN THIS PLAN VARIES FROM THE ACTUAL SITE CONDITIONS, ULTRA ENGINEERING SHALL BE NOTIFIED WITHIN 24 HOURS AFTER DISCOVERY OF THE CONFLICT.

LEGEND

ELECTRICAL	— E —
TRAFFIC SIGNAL	— TS —
SITE LIGHT	— SL —
RAILROAD SIGNAL	— RR —
GAS	— G —
TEL/COMM	— TEL —
INTERCOM	— IC —
FIRE ALARM	— FA —
FIBER OPTIC	— FO —
TELEVISION	— TV —
WATER	— W —
SEWER	— SS —
STORM DRAIN	— SD —
POSSIBLE LINE LOCATION (UNK)	— U —
FIRE HYDRANT	
METER/PULL BOX	
VAULT	
VALVE	
SITE LIGHT	
STREET LIGHT	
UNVERIFIED PATH	— - - -
GAS MANIFOLD	
WATER MAIN BACKFLOW	
OFFSET FROM REFERENCE	— 10'-8" —
DEPTH FROM SURFACE DIA. OF PIPE	— 1'-6" —
NC = NOT CONNECTED	
NLP = NO LONGER PUSH	
NT = NO TONE	
EOS = END OF SIGNAL	
NA = NO ACCESS	
FDC = FIRE DEPARTMENT CONNECTION	
GPR = GROUND PENETRATING RADAR LOCATED LINE	



DATE LOCATED:	3/6/23
DRAWN BY/DATE:	3/17/23
TECHNICIAN:	AZ
CHECK BY/DATE:	HZ
SCALE:	1" = 20'
PROJECT NO.:	
SHEET	3 OF 16

REVISIONS	
NO	DATE BY DESCRIPTION

PARTIAL UNDERGROUND UTILITY MAP FOR:
VCA ENGINEERING
 1041 S GARFIELD AVE, SUITE 210, ALHAMBRA, CA 91801
COMPTON COMMUNITY COLLEGE
 1111 E ARTESIA BLVD, COMPTON, CA 90221

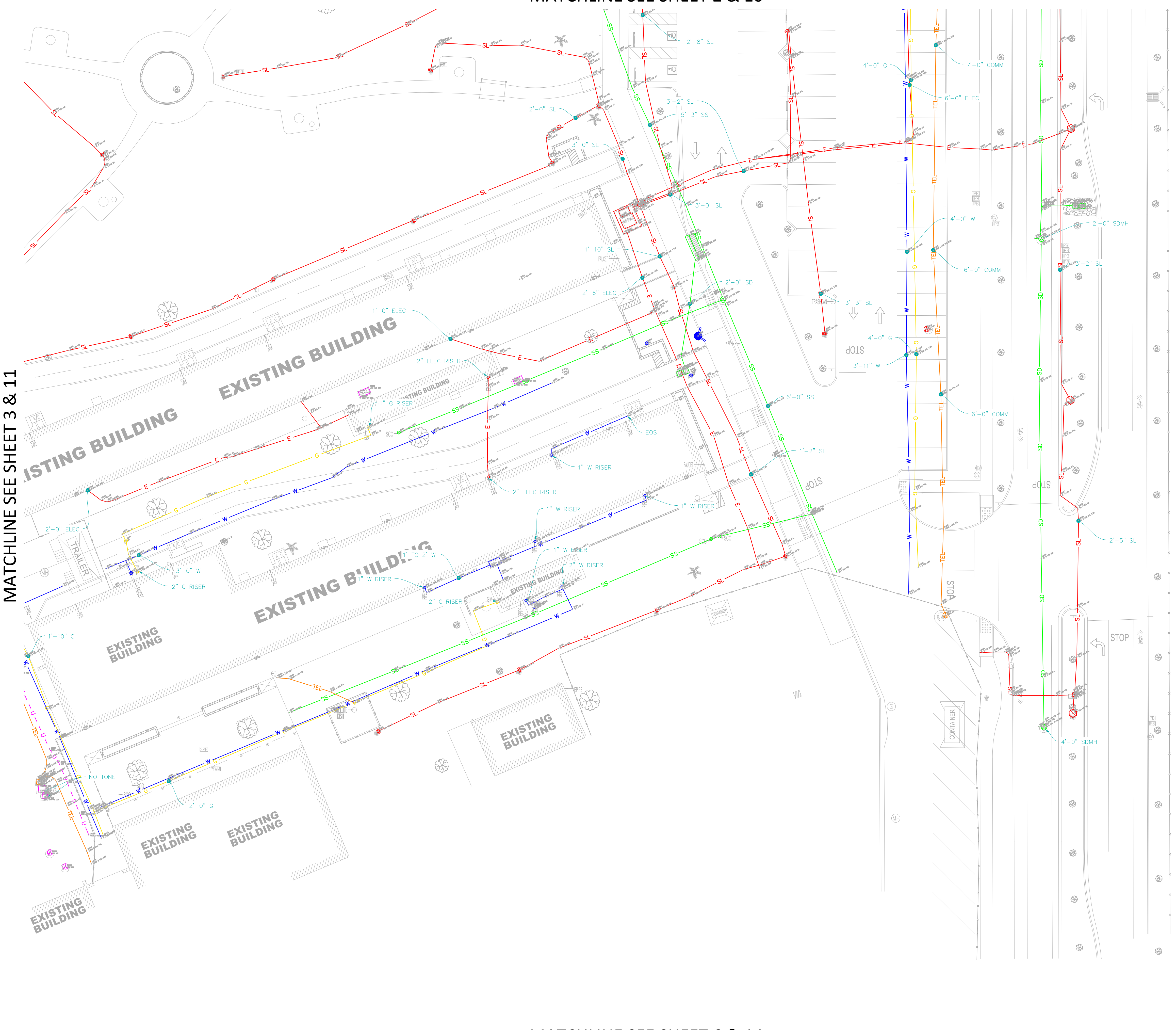
NOTES:
 The services provided by Ultra Engineering are intended to be used by the Client and/or property owner of the responsibility of having to comply with California Government Code §4216-4216.9. It is expressly understood by the Client and Ultra Engineering that the Engineering services are not a substitute for compliance with California Code §4216-4216.9.

38006 FBELEY CT. WINCHESTER, CA 93296 | PHONE: 951-223-5552 | HTTP://WWW.ULTRAENGINEERING.COM

MATCHLINE SEE SHEET 2 & 10

MATCHLINE SEE SHEET 3 & 11

MATCHLINE SEE SHEET 6 & 14



SHEET 1 & 9	SHEET 2 & 10
SHEET 3 & 11	SHEET 4 & 12
SHEET 5 & 13	SHEET 6 & 14
SHEET 7 & 15	SHEET 8 & 16

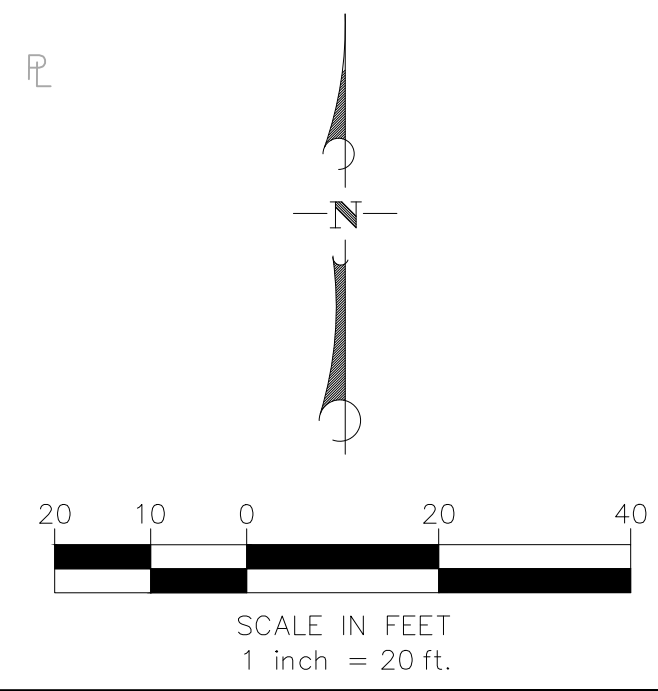
VICINITY MAP
N.T.S.

UTILITY NOTES

- FACILITIES (UTILITY LINES) SHALL BE LOCATED AND MARKED PRIOR TO EXCAVATION. CALL 811 FOR DIG ALERT.
- CONTRACTOR SHALL HAND-EXPOSE TO A POINT OF NO CONFLICT 24" ON EITHER SIDE OF THE UNDERGROUND FACILITY, REGARDLESS OF THE ESTIMATED DEPTH.
- DEPTHS SHOWN ARE APPROXIMATE. ESTIMATED DEPTHS ARE FROM THE GROUND SURFACE TO THE CENTER OF THE FACILITY, INVERT OF WASTE LINES, OR TO THE FACILITY TRACER WIRE. DEPTH ESTIMATES SHOULD BE USED WITH CAUTION AND MAY VARY ALONG THE LENGTH OF THE FACILITY.
- THE SCOPE OF THIS SURVEY DOES NOT INCLUDE FACILITY SIZE OR NUMBER OF CONDUIT IN MULTIPLE CONDUIT RUNS. IRRIGATION LINES ARE NOT INCLUDED IN THIS SURVEY.
- THE BACKGROUND SITE PLAN USED IN PREPARING THIS MAP WAS PREPARED BY OTHERS AND PROVIDED TO ULTRA ENGINEERING BY THE CLIENT. ULTRA ENGINEERING MAKES NO REPRESENTATION AS TO THE ACCURACY OF THE PLAN.
- IN THE EVENT THE INFORMATION SHOWN IN THIS PLAN VARIES FROM THE ACTUAL SITE CONDITIONS, ULTRA ENGINEERING SHALL BE NOTIFIED WITHIN 24 HOURS AFTER DISCOVERY OF THE CONFLICT.

LEGEND

ELECTRICAL	E
TRAFFIC SIGNAL	TS
SITE LIGHT	SL
RAILROAD SIGNAL	RR
GAS	G
TEL/COMM	TEL
INTERCOM	IC
FIRE ALARM	FA
FIBER OPTIC	FO
TELEVISION	TV
WATER	W
SEWER	SS
STORM DRAIN	SD
POSSIBLE LINE LOCATION (UNK)	U
FIRE HYDRANT	
METER/PULL BOX	
VAULT	
VALVE	
SITE LIGHT	
STREET LIGHT	
UNVERIFIED PATH	
GAS MANIFOLD	
WATER MAIN BACKFLOW	
OFFSET FROM REFERENCE	10'-8"
DEPTH FROM SURFACE DIA. OF PIPE	1'-6"
NC = NOT CONNECTED	
NLP = NO LONGER PUSH	
NT = NO TONE	
EOS = END OF SIGNAL	
NA = NO ACCESS	
FDC = FIRE DEPARTMENT CONNECTION	
GPR = GROUND PENETRATING RADAR LOCATED LINE	



DATE LOCATED:	3/6/23
DRAWN BY/DATE:	TECHNICIAN 3/17/23
CHECK BY/DATE:	AZ
QC CHECKED BY/DATE:	HZ
SCALE:	1" = 20'
PROJECT NO.:	
SHEET	4 OF 16

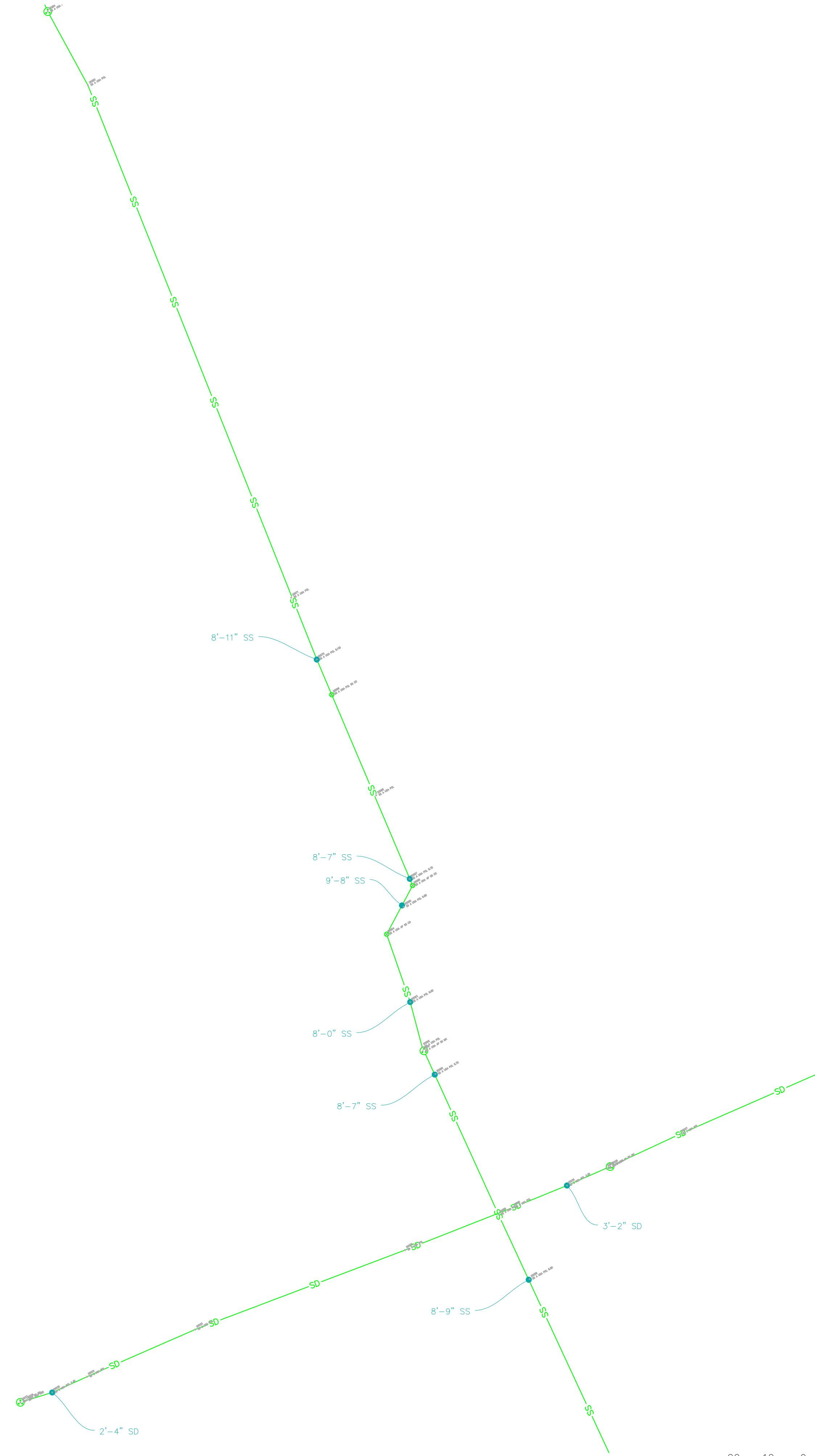
NO	DATE	DESCRIPTION

PARTIAL UNDERGROUND UTILITY MAP FOR:
VCA ENGINEERING
 1041 S GARFIELD AVE, SUITE 210, ALHAMBRA, CA 91801
COMPTON COMMUNITY COLLEGE
 1111 E ARTESIA BLVD, COMPTON, CA 90221

NOTES:
 The services provided by Ultra Engineering are for the use of the Client and for property owner of the responsibility of having to comply with California Government Code §44216-4216.9. It is expressly understood by the Client and Ultra Engineering that the engineering services are not a substitute for compliance with California Code §44216-4216.9.

3806 FBELEY CT. WINCHESTER, CA 93296 | PHONE: 951-223-5552 | HTTP://WWW.ULTRAENGINEERING.COM

MATCHLINE SEE SHEET 3 & 11



MATCHLINE SEE SHEET 7 & 15

SHEET 1 & 9	SHEET 2 & 10
SHEET 3 & 11	SHEET 4 & 12
SHEET 5 & 13	SHEET 6 & 14
SHEET 7 & 15	SHEET 8 & 16

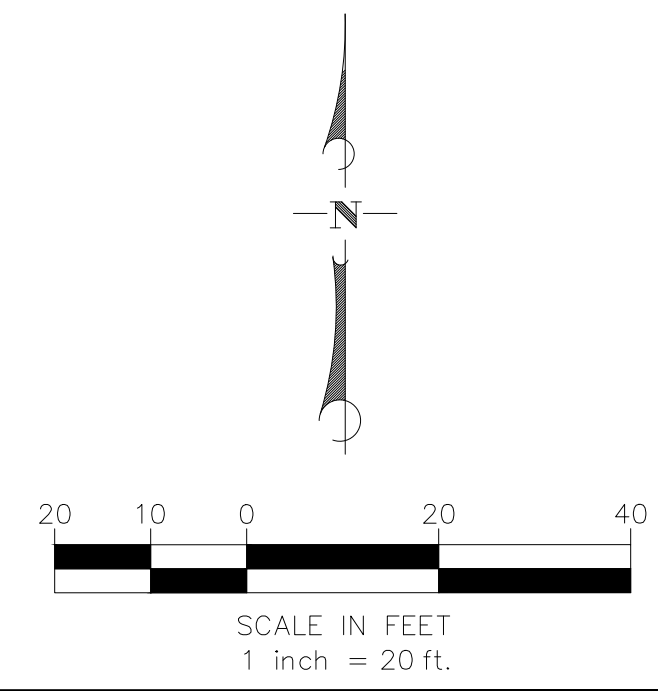
VICINITY MAP
N.T.S.

UTILITY NOTES

- FACILITIES (UTILITY LINES) SHALL BE LOCATED AND MARKED PRIOR TO EXCAVATION. CALL 811 FOR DIG ALERT.
- CONTRACTOR SHALL HAND-EXPOSE TO A POINT OF NO CONFLICT 24" ON EITHER SIDE OF THE UNDERGROUND FACILITY, REGARDLESS OF THE ESTIMATED DEPTH.
- DEPTHS SHOWN ARE APPROXIMATE. ESTIMATED DEPTHS ARE FROM THE GROUND SURFACE TO THE CENTER OF THE FACILITY, INVERT OF WASTE LINES, OR TO THE FACILITY TRACER WIRE. DEPTH ESTIMATES SHOULD BE USED WITH CAUTION AND MAY VARY ALONG THE LENGTH OF THE FACILITY.
- THE SCOPE OF THIS SURVEY DOES NOT INCLUDE FACILITY SIZE OR NUMBER OF CONDUIT IN MULTIPLE CONDUIT RUNS. IRRIGATION LINES ARE NOT INCLUDED IN THIS SURVEY.
- THE BACKGROUND SITE PLAN USED IN PREPARING THIS MAP WAS PREPARED BY OTHERS AND PROVIDED TO ULTRA ENGINEERING BY THE CLIENT. ULTRA ENGINEERING MAKES NO REPRESENTATION AS TO THE ACCURACY OF THE PLAN.
- IN THE EVENT THE INFORMATION SHOWN IN THIS PLAN VARIES FROM THE ACTUAL SITE CONDITIONS, ULTRA ENGINEERING SHALL BE NOTIFIED WITHIN 24 HOURS AFTER DISCOVERY OF THE CONFLICT.

LEGEND

ELECTRICAL	— E —
TRAFFIC SIGNAL	— TS —
SITE LIGHT	— SL —
RAILROAD SIGNAL	— RR —
GAS	— G —
TEL/COMM	— TEL —
INTERCOM	— IC —
FIRE ALARM	— FA —
FIBER OPTIC	— FO —
TELEVISION	— TV —
WATER	— W —
SEWER	— SS —
STORM DRAIN	— SD —
POSSIBLE LINE LOCATION (UNK)	— U —
FIRE HYDRANT	
METER/PULL BOX	
VAULT	
VALVE	
SITE LIGHT	
STREET LIGHT	
UNVERIFIED PATH	— - - -
GAS MANIFOLD	
WATER MAIN BACKFLOW	
OFFSET FROM REFERENCE	— 10'-8" —
DEPTH FROM SURFACE DIA. OF PIPE	— 1'-6" —
NC = NOT CONNECTED	
NLP = NO LONGER PUSH	
NT = NO TONE	
EOS = END OF SIGNAL	
NA = NO ACCESS	
FDC = FIRE DEPARTMENT CONNECTION	
GPR = GROUND PENETRATING RADAR LOCATED LINE	



MATCHLINE SEE SHEET 6 & 14

DATE LOCATED:	3/6/23
DRAWN BY/DATE:	3/17/23
TECHNICIAN:	AZ
CHECK BY/DATE:	HZ
QC CHECKED BY/DATE:	1" = 20'
PROJECT NO.:	
SHEET	5 OF 16

REVISIONS	
NO	DATE BY DESCRIPTION

PARTIAL UNDERGROUND UTILITY MAP FOR:
VCA ENGINEERING
 1041 S GARFIELD AVE, SUITE 210, ALHAMBRA, CA 91801
COMPTON COMMUNITY COLLEGE
 1111 E ARTESIA BLVD, COMPTON, CA 90221

NOTES:
 The services provided by Ultra Engineering are for the use of the Client and for property owner of the responsibility of having to comply with California Government Code §64216-4216.9. It is expressly understood by the Client that Ultra Engineering's services are not a substitute for compliance with California Code §64216-4216.9.



38606 FBELEY CT. WINCHESTER, CA 93296 | PHONE: 951-223-5552 | HTTP://WWW.ULTRAENGINEERING.COM

MATCHLINE SEE SHEET 4 & 12

MATCHLINE SEE SHEET 5 & 13

MATCHLINE SEE SHEET 8 & 16

SHEET 1 & 9	SHEET 2 & 10
SHEET 3 & 11	SHEET 4 & 12
SHEET 5 & 13	SHEET 6 & 14
SHEET 7 & 15	SHEET 8 & 16

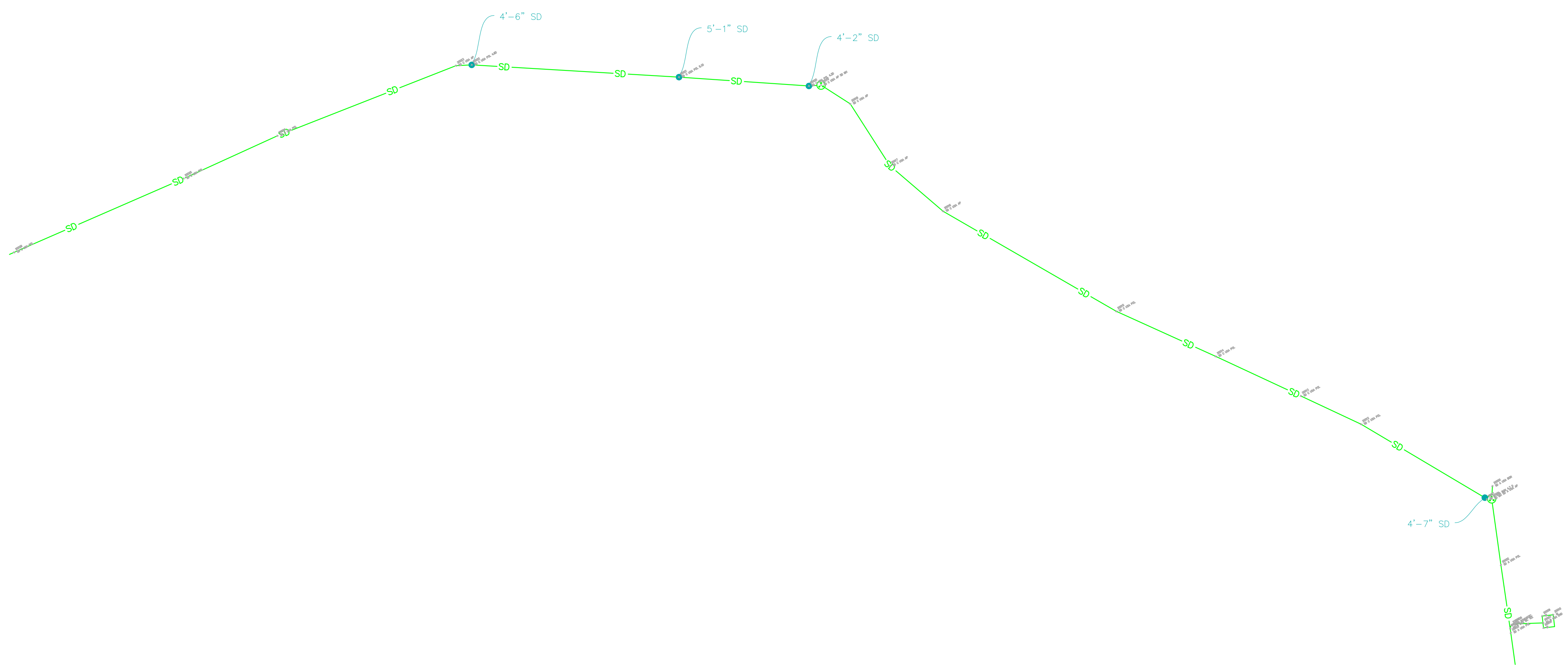
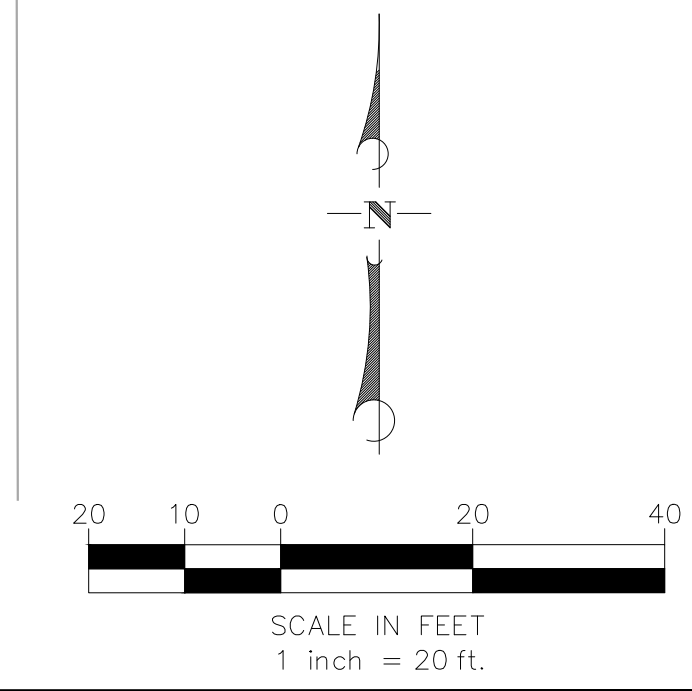
VICINITY MAP
N.T.S.

UTILITY NOTES

- FACILITIES (UTILITY LINES) SHALL BE LOCATED AND MARKED PRIOR TO EXCAVATION. CALL 811 FOR DIG ALERT.
- CONTRACTOR SHALL HAND-EXPOSE TO A POINT OF NO CONFLICT 24" ON EITHER SIDE OF THE UNDERGROUND FACILITY, REGARDLESS OF THE ESTIMATED DEPTH.
- DEPTHS SHOWN ARE APPROXIMATE. ESTIMATED DEPTHS ARE FROM THE GROUND SURFACE TO THE CENTER OF THE FACILITY, INVERT OF WASTE LINES, OR TO THE FACILITY TRACER WIRE. DEPTH ESTIMATES SHOULD BE USED WITH CAUTION AND MAY VARY ALONG THE LENGTH OF THE FACILITY.
- THE SCOPE OF THIS SURVEY DOES NOT INCLUDE FACILITY SIZE OR NUMBER OF CONDUIT IN MULTIPLE CONDUIT RUNS. IRRIGATION LINES ARE NOT INCLUDED IN THIS SURVEY.
- THE BACKGROUND SITE PLAN USED IN PREPARING THIS MAP WAS PREPARED BY OTHERS AND PROVIDED TO ULTRA ENGINEERING BY THE CLIENT. ULTRA ENGINEERING MAKES NO REPRESENTATION AS TO THE ACCURACY OF THE PLAN.
- IN THE EVENT THE INFORMATION SHOWN IN THIS PLAN VARIES FROM THE ACTUAL SITE CONDITIONS, ULTRA ENGINEERING SHALL BE NOTIFIED WITHIN 24 HOURS AFTER DISCOVERY OF THE CONFLICT.

LEGEND

ELECTRICAL	—E—
TRAFFIC SIGNAL	—TS—
SITE LIGHT	—SL—
RAILROAD SIGNAL	—RR—
GAS	—G—
TEL/COMM	—TEL—
INTERCOM	—IC—
FIRE ALARM	—FA—
FIBER OPTIC	—FO—
TELEVISION	—TV—
WATER	—W—
SEWER	—SS—
STORM DRAIN	—SD—
POSSIBLE LINE LOCATION (UNK)	—U—
FIRE HYDRANT	
METER/PULL BOX	
VAULT	
VALVE	
SITE LIGHT	
STREET LIGHT	
UNVERIFIED PATH	---
GAS MANIFOLD	
WATER MAIN	
BACKFLOW	
OFFSET FROM REFERENCE	← 10'-8" →
DEPTH FROM SURFACE	1'-6"
DIA. OF PIPE	
NC = NOT CONNECTED	
NLP = NO LONGER PUSH	
NT = NO TONE	
EOS = END OF SIGNAL	
NA = NO ACCESS	
FDC = FIRE DEPARTMENT CONNECTION	
GPR = GROUND PENETRATING RADAR LOCATED LINE	



DATE LOCATED:	3/6/23	SHEET	6 OF 16
DRAWN BY/DATE:	3/17/23	TECHNICIAN	AZ
CHECK BY/DATE:		QC CHECKED BY/DATE:	HZ
		SCALE:	1" = 20'
		PROJECT NO.:	

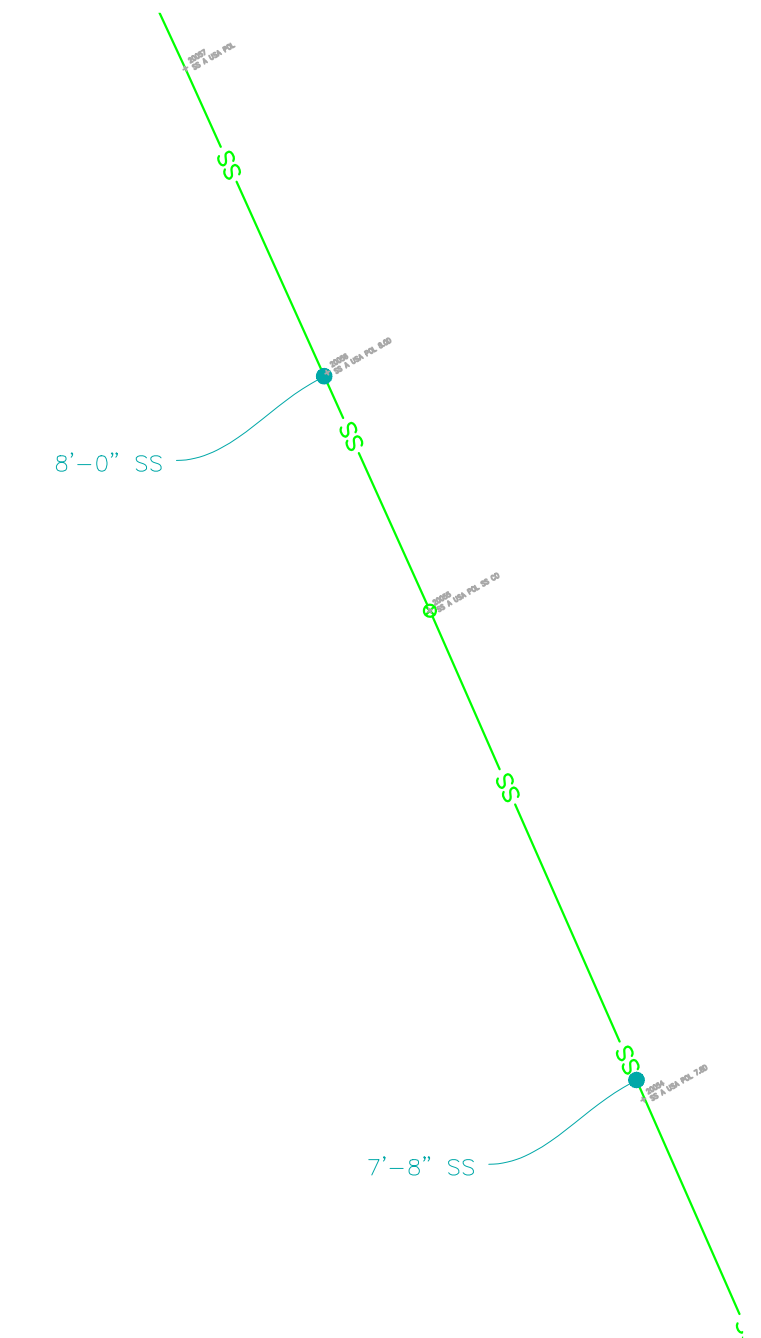
REVISIONS	
NO	DATE

PARTIAL UNDERGROUND UTILITY MAP FOR:
VCA ENGINEERING
 1041 S GARFIELD AVE, SUITE 210, ALHAMBRA, CA 91801
COMPTON COMMUNITY COLLEGE
 1111 E ARTESIA BLVD, COMPTON, CA 90221

NOTES:
 The services provided by Ultra Engineering are for the use of the Client and/or property owner of the responsibility of having to comply with California Government Code §44216-4216.9. It is expressly understood by the Client and Ultra Engineering that the Engineering services are not a substitute for compliance with California Code §44216-4216.9.

38006 PEBLEY CT. WINCHESTER, CA 93296 | PHONE: 951-223-5552 | HTTP://WWW.ULTRAENGINEERING.COM

MATCHLINE SEE SHEET 5 & 13



MATCHLINE SEE SHEET 8 & 16

SHEET 1 & 9	SHEET 2 & 10
SHEET 3 & 11	SHEET 4 & 12
SHEET 5 & 13	SHEET 6 & 14
SHEET 7 & 15	SHEET 8 & 16

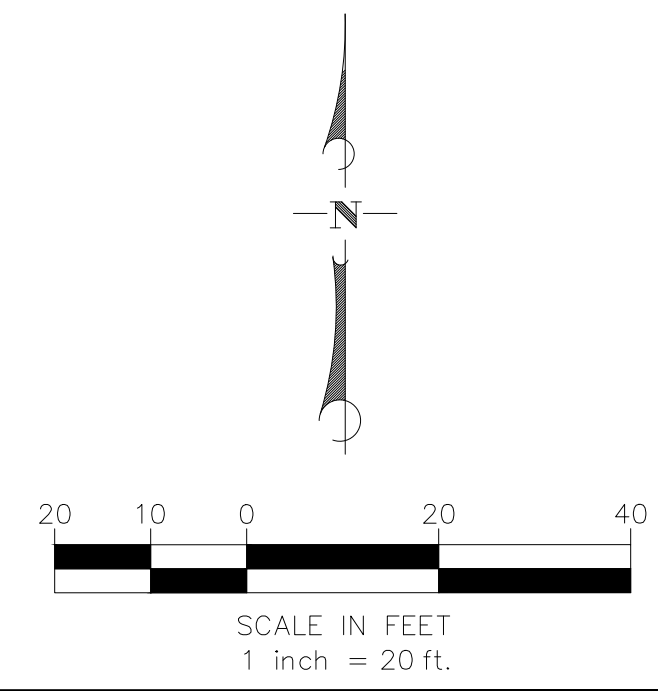
VICINITY MAP
N.T.S.

UTILITY NOTES

- FACILITIES (UTILITY LINES) SHALL BE LOCATED AND MARKED PRIOR TO EXCAVATION. CALL 811 FOR DIG ALERT.
- CONTRACTOR SHALL HAND-EXPOSE TO A POINT OF NO CONFLICT 24" ON EITHER SIDE OF THE UNDERGROUND FACILITY, REGARDLESS OF THE ESTIMATED DEPTH.
- DEPTHS SHOWN ARE APPROXIMATE. ESTIMATED DEPTHS ARE FROM THE GROUND SURFACE TO THE CENTER OF THE FACILITY, INVERT OF WASTE LINES, OR TO THE FACILITY TRACER WIRE. DEPTH ESTIMATES SHOULD BE USED WITH CAUTION AND MAY VARY ALONG THE LENGTH OF THE FACILITY.
- THE SCOPE OF THIS SURVEY DOES NOT INCLUDE FACILITY SIZE OR NUMBER OF CONDUIT IN MULTIPLE CONDUIT RUNS. IRRIGATION LINES ARE NOT INCLUDED IN THIS SURVEY.
- THE BACKGROUND SITE PLAN USED IN PREPARING THIS MAP WAS PREPARED BY OTHERS AND PROVIDED TO ULTRA ENGINEERING BY THE CLIENT. ULTRA ENGINEERING MAKES NO REPRESENTATION AS TO THE ACCURACY OF THE PLAN.
- IN THE EVENT THE INFORMATION SHOWN IN THIS PLAN VARIES FROM THE ACTUAL SITE CONDITIONS, ULTRA ENGINEERING SHALL BE NOTIFIED WITHIN 24 HOURS AFTER DISCOVERY OF THE CONFLICT.

LEGEND

ELECTRICAL	— E —
TRAFFIC SIGNAL	— TS —
SITE LIGHT	— SL —
RAILROAD SIGNAL	— RR —
GAS	— G —
TEL/COMM	— TEL —
INTERCOM	— IC —
FIRE ALARM	— FA —
FIBER OPTIC	— FO —
TELEVISION	— TV —
WATER	— W —
SEWER	— SS —
STORM DRAIN	— SD —
POSSIBLE LINE LOCATION (UNK)	— U —
FIRE HYDRANT	
METER/PULL BOX	
VAULT	
VALVE	
SITE LIGHT	
STREET LIGHT	
UNVERIFIED PATH	— - - -
GAS MANIFOLD	
WATER MAIN BACKFLOW	
OFFSET FROM REFERENCE	— 10'-8" —
DEPTH FROM SURFACE DIA. OF PIPE	— 1'-6" —
NC = NOT CONNECTED	
NLP = NO LONGER PUSH	
NT = NO TONE	
EOS = END OF SIGNAL	
NA = NO ACCESS	
FDC = FIRE DEPARTMENT CONNECTION	
GPR = GROUND PENETRATING RADAR LOCATED LINE	



DATE LOCATED:	3/6/23
DRAWN BY/DATE:	3/17/23
TECHNICIAN:	AZ
CHECK BY/DATE:	AZ
QC CHECKED BY/DATE:	HZ
SCALE:	1" = 20'
PROJECT NO.:	
SHEET	7 OF 16

REVISIONS	
NO	DATE

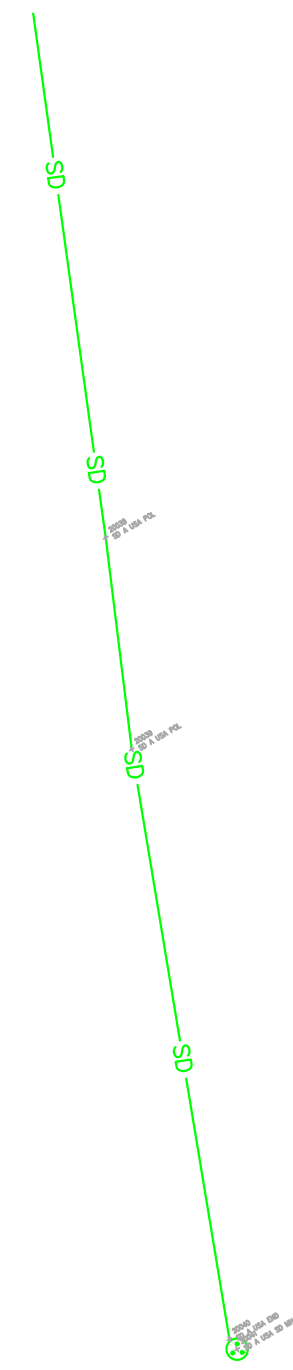
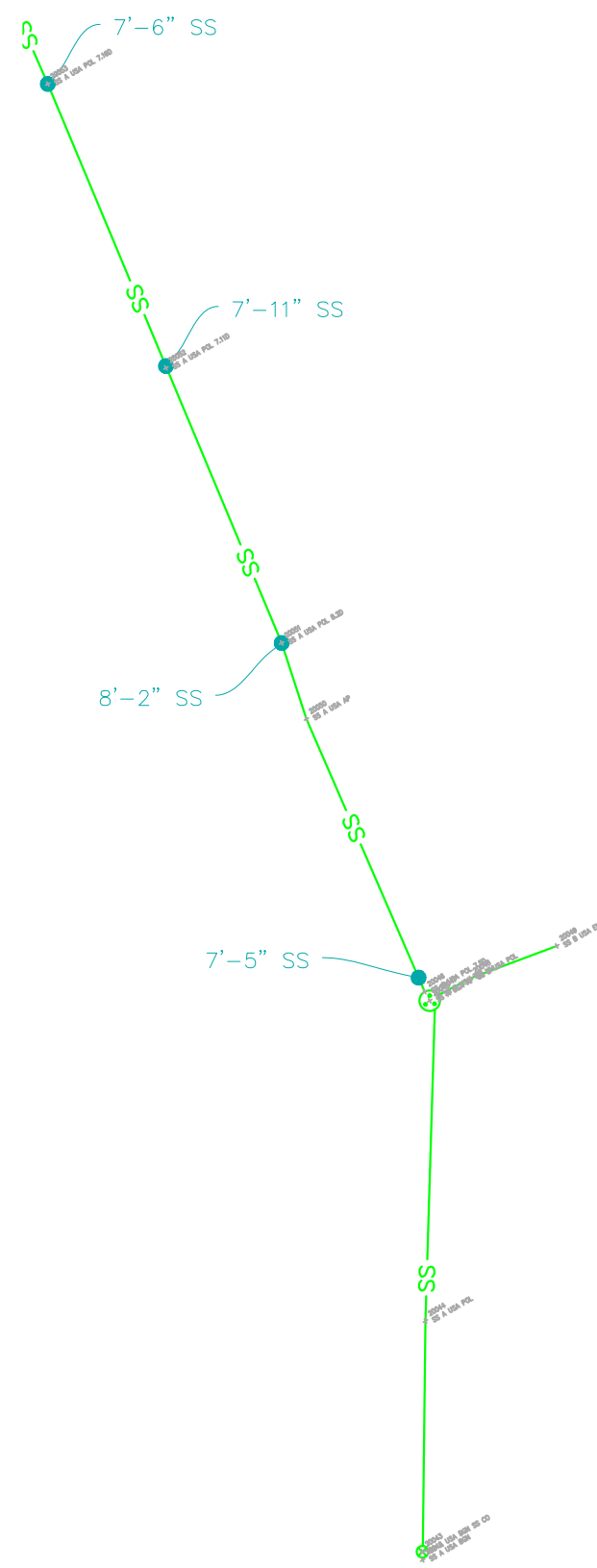
PARTIAL UNDERGROUND UTILITY MAP FOR:
VCA ENGINEERING
 1041 S GARFIELD AVE, SUITE 210, ALHAMBRA, CA 91801
COMPTON COMMUNITY COLLEGE
 1111 E ARTESIA BLVD, COMPTON, CA 90221

NOTES:
 The services provided by Ultra Engineering are for the use of the Client and for property owner of the responsibility of having to comply with California Government Code §64216-4216.9. It is expressly understood by the Client that Ultra Engineering's services are not a substitute for compliance with California Code §64216-4216.9.

38806 FBELEY CT. WINCHESTER, CA 93296 | PHONE: 951-223-5552 | HTTP://WWW.ULTRAENGINEERING.COM

MATCHLINE SEE SHEET 6 & 14

MATCHLINE SEE SHEET 7 & 15



SHEET 1 & 9	SHEET 2 & 10
SHEET 3 & 11	SHEET 4 & 12
SHEET 5 & 13	SHEET 6 & 14
SHEET 7 & 15	SHEET 8 & 16

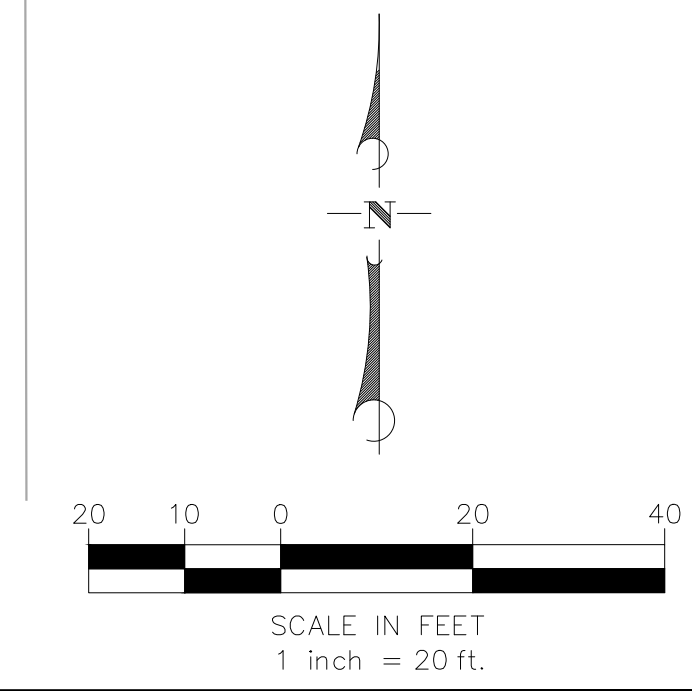
VICINITY MAP
N.T.S.

UTILITY NOTES

- FACILITIES (UTILITY LINES) SHALL BE LOCATED AND MARKED PRIOR TO EXCAVATION. CALL 811 FOR DIG ALERT.
- CONTRACTOR SHALL HAND-EXPOSE TO A POINT OF NO CONFLICT 24" ON EITHER SIDE OF THE UNDERGROUND FACILITY, REGARDLESS OF THE ESTIMATED DEPTH.
- DEPTHS SHOWN ARE APPROXIMATE. ESTIMATED DEPTHS ARE FROM THE GROUND SURFACE TO THE CENTER OF THE FACILITY, INVERT OF WASTE LINES, OR TO THE FACILITY TRACER WIRE. DEPTH ESTIMATES SHOULD BE USED WITH CAUTION AND MAY VARY ALONG THE LENGTH OF THE FACILITY.
- THE SCOPE OF THIS SURVEY DOES NOT INCLUDE FACILITY SIZE OR NUMBER OF CONDUIT IN MULTIPLE CONDUIT RUNS. IRRIGATION LINES ARE NOT INCLUDED IN THIS SURVEY.
- THE BACKGROUND SITE PLAN USED IN PREPARING THIS MAP WAS PREPARED BY OTHERS AND PROVIDED TO ULTRA ENGINEERING BY THE CLIENT. ULTRA ENGINEERING MAKES NO REPRESENTATION AS TO THE ACCURACY OF THE PLAN.
- IN THE EVENT THE INFORMATION SHOWN IN THIS PLAN VARIES FROM THE ACTUAL SITE CONDITIONS, ULTRA ENGINEERING SHALL BE NOTIFIED WITHIN 24 HOURS AFTER DISCOVERY OF THE CONFLICT.

LEGEND

ELECTRICAL	— E —
TRAFFIC SIGNAL	— TS —
SITE LIGHT	— SL —
RAILROAD SIGNAL	— RR —
GAS	— G —
TEL/COMM	— TEL —
INTERCOM	— IC —
FIRE ALARM	— FA —
FIBER OPTIC	— FO —
TELEVISION	— TV —
WATER	— W —
SEWER	— SS —
STORM DRAIN	— SD —
POSSIBLE LINE LOCATION (UNK)	— U —
FIRE HYDRANT	
METER/PULL BOX	
VAULT	
VALVE	
SITE LIGHT	
STREET LIGHT	
UNVERIFIED PATH	— - - - -
GAS MANIFOLD	
WATER MAIN BACKFLOW	
OFFSET FROM REFERENCE	— 10'-8" —
DEPTH FROM SURFACE DIA. OF PIPE	— 1'-6" —
NC = NOT CONNECTED	
NLP = NO LONGER PUSH	
NT = NO TONE	
EOS = END OF SIGNAL	
NA = NO ACCESS	
FDC = FIRE DEPARTMENT CONNECTION	
GPR = GROUND PENETRATING RADAR LOCATED LINE	



DATE LOCATED:	3/6/23
DRAWN BY/DATE:	3/17/23
TECHNICIAN:	AZ
CHECK BY/DATE:	HZ
QC CHECKED BY/DATE:	1" = 20'
PROJECT NO.:	
SHEET:	8 OF 16

REVISIONS	
NO	DATE

PARTIAL UNDERGROUND UTILITY MAP FOR:
VCA ENGINEERING
 1041 S GARFIELD AVE, SUITE 210, ALHAMBRA, CA 91801
COMPTON COMMUNITY COLLEGE
 1111 E ARTESIA BLVD, COMPTON, CA 90221

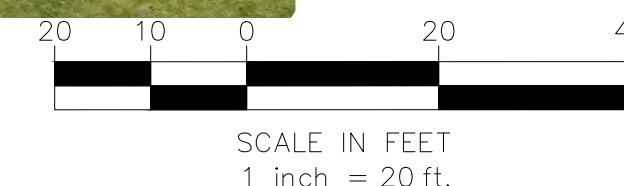
NOTES:
 The services provided by Ultra Engineering are for the use of the Client and/or property owner of the responsibility of having to comply with California Government Code §64216-4216.9. It is expressly understood by the Client and Ultra Engineering that the Engineering services are not a substitute for compliance with California Code §64216-4216.9.





MATCHLINE SEE SHEET 3 & 11

MATCHLINE SEE SHEET 2 & 10



VICINITY MAP
N.T.S.

UTILITY NOTES

- FACILITIES (UTILITY LINES) SHALL BE LOCATED AND MARKED PRIOR TO EXCAVATION. CALL 811 FOR DIG ALERT.
- CONTRACTOR SHALL HAND-EXPOSE TO A POINT OF NO CONFLICT 24" ON EITHER SIDE OF THE UNDERGROUND FACILITY, REGARDLESS OF THE ESTIMATED DEPTH.
- DEPTHS SHOWN ARE APPROXIMATE. ESTIMATED DEPTHS ARE FROM THE GROUND SURFACE TO THE CENTER OF THE FACILITY. INVERT OF WASTE LINES, OR TO THE FACILITY TRACER WIRE. DEPTH ESTIMATES SHOULD BE USED WITH CAUTION AND MAY VARY ALONG THE LENGTH OF THE FACILITY.
- THE SCOPE OF THIS SURVEY DOES NOT INCLUDE FACILITY SIZE OR NUMBER OF CONDUIT IN MULTIPLE CONDUIT RUNS. IRRIGATION LINES ARE NOT INCLUDED IN THIS SURVEY.
- THE BACKGROUND SITE PLAN USED IN PREPARING THIS MAP WAS PREPARED BY OTHERS AND PROVIDED TO ULTRA ENGINEERING BY THE CLIENT. ULTRA ENGINEERING MAKES NO REPRESENTATION AS TO THE ACCURACY OF THE PLAN.
- IN THE EVENT THE INFORMATION SHOWN IN THIS PLAN VARIES FROM THE ACTUAL SITE CONDITIONS, ULTRA ENGINEERING SHALL BE NOTIFIED WITHIN 24 HOURS AFTER DISCOVERY OF THE CONFLICT.

LEGEND

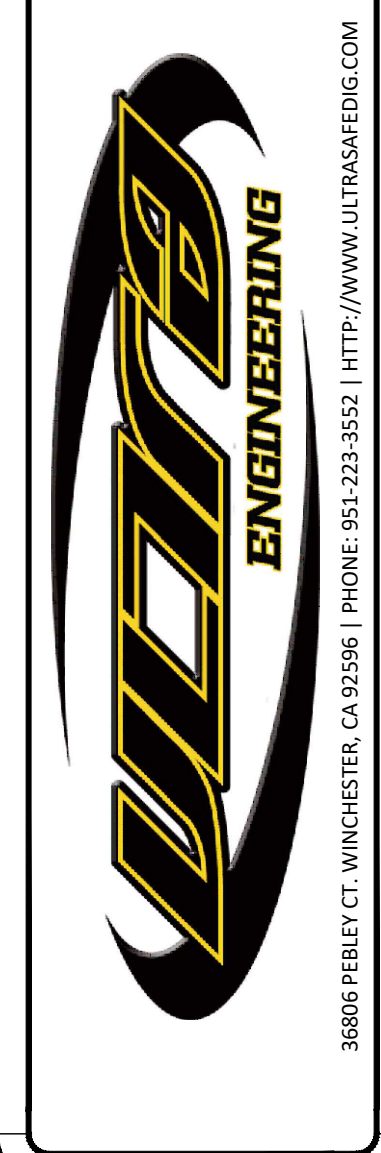
ELECTRICAL	— E —
TRAFFIC SIGNAL	— TS —
SITE LIGHT	— SL —
RAILROAD SIGNAL	— RR —
GAS	— G —
TEL/COMM	— TEL —
INTERCOM	— IC —
FIRE ALARM	— FA —
FIBER OPTIC	— FO —
TELEVISION	— TV —
WATER	— W —
SEWER	— SS —
STORM DRAIN	— SD —
POSSIBLE LINE LOCATION (UNK)	— U —
FIRE HYDRANT	
METER/PULL BOX	
Vault	
Valve	
Site Light	
Street Light	
UNVERIFIED PATH	— - - —
GAS MANIFOLD	
WATER MAIN	
BACKFLOW	
OFFSET FROM REFERENCE	— 10'-8" —
DEPTH FROM SURFACE DIA. OF PIPE	— 1'-6" —
NC = NOT CONNECTED	
NLP = NO LONGER PUSH	
NT = NO TONE	
EOS = END OF SIGNAL	
NA = NO ACCESS	
FDC = FIRE DEPARTMENT CONNECTION	
GPR = GROUND PENETRATING RADAR LOCATED LINE	

DATE LOCATED:	3/6/23
DRAWN BY/DATE:	3/17/23
TECHNICIAN:	AZ
CHECK BY/DATE:	HZ
QC CHECKED BY/DATE:	1" = 20'
SCALE:	PROJECT NO.:
SHEET	9 OF 16

NO	DATE	DESCRIPTION

PARTIAL UNDERGROUND UTILITY MAP FOR:
VCA ENGINEERING
 1041 S GARFIELD AVE, SUITE 210, ALHAMBRA, CA 91801
COMPTON COMMUNITY COLLEGE
 1111 E ARTESIA BLVD, COMPTON, CA 90221

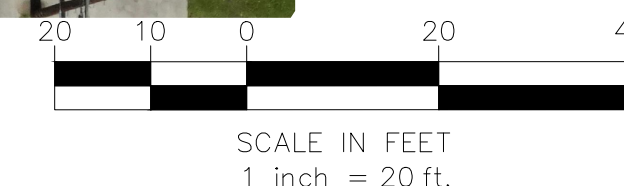
NOTES:
 The services provided by Ultra Engineering are for the use of the Client and for the property owner of the facility. It is the responsibility of the Client and the property owner to verify the accuracy of the information shown on this map. It is expressly understood by the Client and the property owner that Ultra Engineering is not a contractor and its services are not a substitute for compliance with applicable laws and regulations. California Code §64216-4216.9.



MATCHLINE SEE SHEET 1 & 9



MATCHLINE SEE SHEET 4 & 12



VICINITY MAP
N.T.S.

UTILITY NOTES

- ① FACILITIES (UTILITY LINES) SHALL BE LOCATED AND MARKED PRIOR TO EXCAVATION. CALL 811 FOR DIG ALERT.
- ② CONTRACTOR SHALL HAND-EXPOSE TO A POINT OF NO CONFLICT 24" ON EITHER SIDE OF THE UNDERGROUND FACILITY, REGARDLESS OF THE ESTIMATED DEPTH.
- ③ DEPTHS SHOWN ARE APPROXIMATE. ESTIMATED DEPTHS ARE FROM THE GROUND SURFACE TO THE CENTER OF THE FACILITY. INVERT OF WASTE LINES, OR TO THE FACILITY TRACER WIRE. DEPTH ESTIMATES SHOULD BE USED WITH CAUTION AND MAY VARY ALONG THE LENGTH OF THE FACILITY.
- ④ THE SCOPE OF THIS SURVEY DOES NOT INCLUDE FACILITY SIZE OR NUMBER OF CONDUIT IN MULTIPLE CONDUIT RUNS. IRRIGATION LINES ARE NOT INCLUDED IN THIS SURVEY.
- ⑤ THE BACKGROUND SITE PLAN USED IN PREPARING THIS MAP WAS PREPARED BY OTHERS AND PROVIDED TO ULTRA ENGINEERING BY THE CLIENT. ULTRA ENGINEERING MAKES NO REPRESENTATION AS TO THE ACCURACY OF THE PLAN.
- ⑥ IN THE EVENT THE INFORMATION SHOWN IN THIS PLAN VARIES FROM THE ACTUAL SITE CONDITIONS, ULTRA ENGINEERING SHALL BE NOTIFIED WITHIN 24 HOURS AFTER DISCOVERY OF THE CONFLICT.

LEGEND

ELECTRICAL	—E—
TRAFFIC SIGNAL	—TS—
SITE LIGHT	—SL—
RAILROAD SIGNAL	—RR—
GAS	—G—
TEL/COMM	—TEL—
INTERCOM	—IC—
FIRE ALARM	—FA—
FIBER OPTIC	—FO—
TELEVISION	—TV—
WATER	—W—
SEWER	—SS—
STORM DRAIN	—SD—
POSSIBLE LINE LOCATION (UNK)	—U—
FIRE HYDRANT	
METER/PULL BOX	
VAULT	
VALVE	
SITE LIGHT	
STREET LIGHT	
UNVERIFIED PATH	— — —
GAS MANIFOLD	
WATER MAIN BACKFLOW	
OFFSET FROM REFERENCE	—10'-8"
DEPTH FROM SURFACE DIA. OF PIPE	—1'-6"
NC = NOT CONNECTED	
NLP = NO LONGER PUSH	
NT = NO TONE	
EOS = END OF SIGNAL	
NA = NO ACCESS	
FDC = FIRE DEPARTMENT CONNECTION	
GPR = GROUND PENETRATING RADAR LOCATED LINE	

DATE LOCATED:	3/6/23
DRAWN BY/DATE:	3/17/23
TECHNICIAN:	AZ
CHECK BY/DATE:	HZ
QC CHECKED BY/DATE:	1" = 20'
SCALE:	..
PROJECT NO.:	..
SHEET:	10 OF 16

NO	DATE	DESCRIPTION

PARTIAL UNDERGROUND UTILITY MAP FOR:
VCA ENGINEERING
 1041 S GARFIELD AVE, SUITE 210, ALHAMBRA, CA 91801
COMPTON COMMUNITY COLLEGE
 1111 E ARTESIA BLVD, COMPTON, CA 90221

NOTES:
 The services provided by Ultra Engineering are for the use of the Client and/or property owner of the responsibility of having to comply with California Government Code §4216-4216.9. It is expressly understood by the Client and/or property owner that Ultra Engineering services are not a substitute for compliance with California Code §4216-4216.9.

3806 FBLEY CT., WINCHESTER, CA 93296 | PHONE: 951-223-5552 | HTTP://WWW.ULTRAENGINEERING.COM

MATCHLINE SEE SHEET 1 & 9



MATCHLINE SEE SHEET 5 & 13



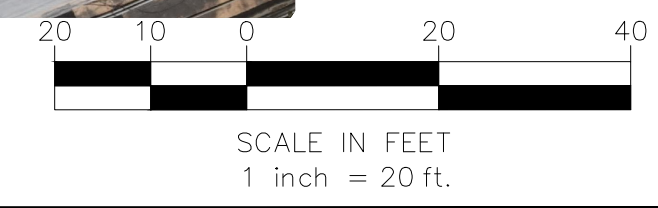
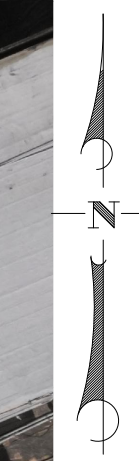
VICINITY MAP
N.T.S.

UTILITY NOTES

- ① FACILITIES (UTILITY LINES) SHALL BE LOCATED AND MARKED PRIOR TO EXCAVATION. CALL 811 FOR DIG ALERT.
- ② CONTRACTOR SHALL HAND-EXPOSE TO A POINT OF NO CONFLICT 24" ON EITHER SIDE OF THE UNDERGROUND FACILITY, REGARDLESS OF THE ESTIMATED DEPTH.
- ③ DEPTHS SHOWN ARE APPROXIMATE. ESTIMATED DEPTHS ARE FROM THE GROUND SURFACE TO THE CENTER OF THE FACILITY, INVERT OF WASTE LINES, OR TO THE FACILITY TRACER WIRE. DEPTH ESTIMATES SHOULD BE USED WITH CAUTION AND MAY VARY ALONG THE LENGTH OF THE FACILITY.
- ④ THE SCOPE OF THIS SURVEY DOES NOT INCLUDE FACILITY SIZE OR NUMBER OF CONDUIT IN MULTIPLE CONDUIT RUNS. IRRIGATION LINES ARE NOT INCLUDED IN THIS SURVEY.
- ⑤ THE BACKGROUND SITE PLAN USED IN PREPARING THIS MAP WAS PREPARED BY OTHERS AND PROVIDED TO ULTRA ENGINEERING BY THE CLIENT. ULTRA ENGINEERING MAKES NO REPRESENTATION AS TO THE ACCURACY OF THE PLAN.
- ⑥ IN THE EVENT THE INFORMATION SHOWN IN THIS PLAN VARIES FROM THE ACTUAL SITE CONDITIONS, ULTRA ENGINEERING SHALL BE NOTIFIED WITHIN 24 HOURS AFTER DISCOVERY OF THE CONFLICT.

LEGEND

ELECTRICAL	— E —
TRAFFIC SIGNAL	— TS —
SITE LIGHT	— SL —
RAILROAD SIGNAL	— RR —
GAS	— G —
TEL/COMM	— TEL —
INTERCOM	— IC —
FIRE ALARM	— FA —
FIBER OPTIC	— FO —
TELEVISION	— TV —
WATER	— W —
SEWER	— SS —
STORM DRAIN	— SD —
POSSIBLE LINE LOCATION (UNK)	— U —
FIRE HYDRANT	⊗
METER/PULL BOX	□
VAULT	□
VALVE	⊗
SITE LIGHT	⊗
STREET LIGHT	⊗
UNVERIFIED PATH	- - -
GAS MANIFOLD	— G —
WATER MAIN	— W —
BACKFLOW	— B —
OFFSET FROM REFERENCE	— 10'-8" —
DEPTH FROM SURFACE	— 1'-6" —
DIA. OF PIPE	— 10'-8" —
NC = NOT CONNECTED	
NLP = NO LONGER PUSH	
NT = NO TONE	
EOS = END OF SIGNAL	
NA = NO ACCESS	
FDC = FIRE DEPARTMENT CONNECTION	
GPR = GROUND PENETRATING RADAR LOCATED LINE	



MATCHLINE SEE SHEET 4 & 12

DATE LOCATED:	3/17/23
DRAWN BY/DATE:	3/17/23
TECHNICIAN:	AZ
CHECK BY/DATE:	AZ
QC CHECKED BY/DATE:	HZ
SCALE:	1" = 20'
PROJECT NO.:	..
SHEET:	11 OF 16

NO	DATE	DESCRIPTION

PARTIAL UNDERGROUND UTILITY MAP FOR:
VCA ENGINEERING
 1041 S GARFIELD AVE, SUITE 210, ALHAMBRA, CA 91801
COMPTON COMMUNITY COLLEGE
 1111 E ARTESIA BLVD, COMPTON, CA 90221

NOTES:
 The services provided by Ultra Engineering are for the use of the Client and for the property owner of the responsibility of having to comply with California Government Code §64216-4216.9. It is expressly understood by the Client and Ultra Engineering that the Engineering services are not a substitute for compliance with California Code §64216-4216.9.



3806 FBELEY CT., WINCHESTER, CA 93296 | PHONE: 951-223-5552 | HTTP://WWW.ULTRAENGINEERING.COM

MATCHLINE SEE SHEET 2 & 10

MATCHLINE SEE SHEET 3 & 11



MATCHLINE SEE SHEET 6 & 14



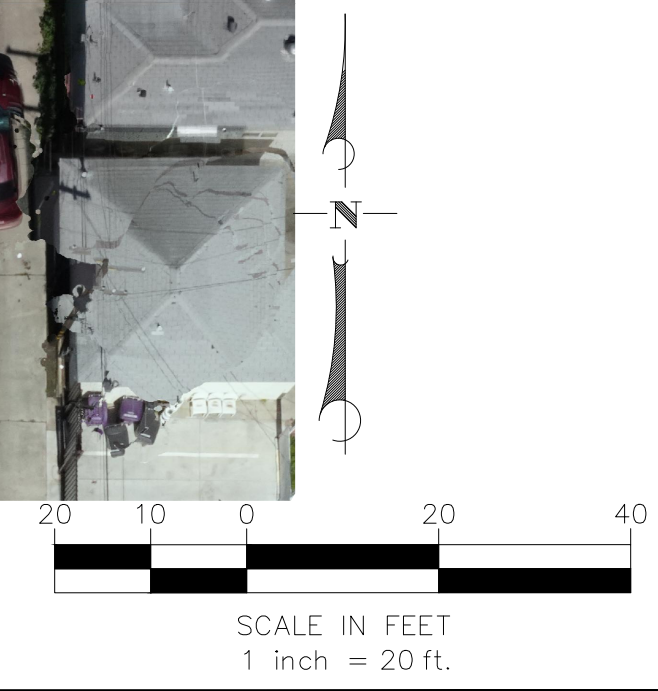
VICINITY MAP
N.T.S.

UTILITY NOTES

- FACILITIES (UTILITY LINES) SHALL BE LOCATED AND MARKED PRIOR TO EXCAVATION. CALL 811 FOR DIG ALERT.
- CONTRACTOR SHALL HAND-EXPOSE TO A POINT OF NO CONFLICT 24" ON EITHER SIDE OF THE UNDERGROUND FACILITY, REGARDLESS OF THE ESTIMATED DEPTH.
- DEPTHS SHOWN ARE APPROXIMATE. ESTIMATED DEPTHS ARE FROM THE GROUND SURFACE TO THE CENTER OF THE FACILITY, INVERT OF WASTE LINES, OR TO THE FACILITY TRACER WIRE. DEPTH ESTIMATES SHOULD BE USED WITH CAUTION AND MAY VARY ALONG THE LENGTH OF THE FACILITY.
- THE SCOPE OF THIS SURVEY DOES NOT INCLUDE FACILITY SIZE OR NUMBER OF CONDUIT IN MULTIPLE CONDUIT RUNS. IRRIGATION LINES ARE NOT INCLUDED IN THIS SURVEY.
- THE BACKGROUND SITE PLAN USED IN PREPARING THIS MAP WAS PREPARED BY OTHERS AND PROVIDED TO ULTRA ENGINEERING BY THE CLIENT. ULTRA ENGINEERING MAKES NO REPRESENTATION AS TO THE ACCURACY OF THE PLAN.
- IN THE EVENT THE INFORMATION SHOWN IN THIS PLAN VARIES FROM THE ACTUAL SITE CONDITIONS, ULTRA ENGINEERING SHALL BE NOTIFIED WITHIN 24 HOURS AFTER DISCOVERY OF THE CONFLICT.

LEGEND

ELECTRICAL	— E —
TRAFFIC SIGNAL	— TS —
SITE LIGHT	— SL —
RAILROAD SIGNAL	— RR —
GAS	— G —
TEL/COMM	— TEL —
INTERCOM	— IC —
FIRE ALARM	— FA —
FIBER OPTIC	— FO —
TELEVISION	— TV —
WATER	— W —
SEWER	— SS —
STORM DRAIN	— SD —
POSSIBLE LINE LOCATION (UNK)	— U —
FIRE HYDRANT	
METER/PULL BOX	
Vault	
Valve	
Site Light	
Street Light	
UNVERIFIED PATH	— - - -
GAS MANIFOLD	
WATER MAIN	
BACKFLOW	
OFFSET FROM REFERENCE	— 10'-8" —
DEPTH FROM SURFACE	— 1'-6" —
DIA. OF PIPE	
NC = NOT CONNECTED	
NLP = NO LONGER PUSH	
NT = NO TONE	
EOS = END OF SIGNAL	
NA = NO ACCESS	
FDC = FIRE DEPARTMENT CONNECTION	
GPR = GROUND PENETRATING RADAR LOCATED LINE	



DATE LOCATED:	3/17/23
DRAWN BY/DATE:	TECHNICIAN
CHECK BY/DATE:	AZ
QC CHECKED BY/DATE:	HZ
SCALE:	1" = 20'
PROJECT NO.:	
SHEET	12 OF 16

NO	DATE	DESCRIPTION

PARTIAL UNDERGROUND UTILITY MAP FOR:
VCA ENGINEERING
 1041 S GARFIELD AVE, SUITE 210, ALHAMBRA, CA 91801
COMPTON COMMUNITY COLLEGE
 1111 E ARTESIA BLVD, COMPTON, CA 90221

NOTES:
 The services provided by Ultra Engineering are not a substitute for compliance with California Code §64216-4216.9. It is expressly understood by the client and property owner of the responsibility of having to comply with California Government Code §64216-4216.9. The engineering services are not a substitute for compliance with California Code §64216-4216.9.



MATCHLINE SEE SHEET 3 & 11



MATCHLINE SEE SHEET 7 & 15



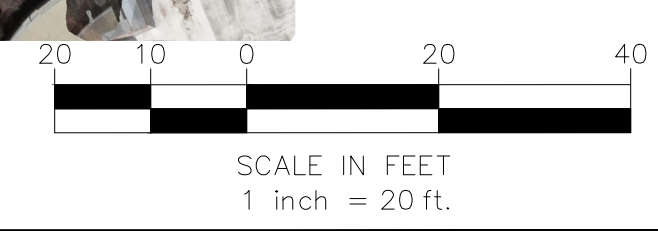
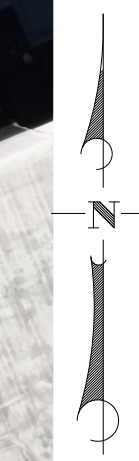
VICINITY MAP
N.T.S.

UTILITY NOTES

- ① FACILITIES (UTILITY LINES) SHALL BE LOCATED AND MARKED PRIOR TO EXCAVATION. CALL 811 FOR DIG ALERT.
- ② CONTRACTOR SHALL HAND-EXPOSE TO A POINT OF NO CONFLICT 24" ON EITHER SIDE OF THE UNDERGROUND FACILITY, REGARDLESS OF THE ESTIMATED DEPTH.
- ③ DEPTHS SHOWN ARE APPROXIMATE. ESTIMATED DEPTHS ARE FROM THE GROUND SURFACE TO THE CENTER OF THE FACILITY, INVERT OF WASTE LINES, OR TO THE FACILITY TRACER WIRE. DEPTH ESTIMATES SHOULD BE USED WITH CAUTION AND MAY VARY ALONG THE LENGTH OF THE FACILITY.
- ④ THE SCOPE OF THIS SURVEY DOES NOT INCLUDE FACILITY SIZE OR NUMBER OF CONDUIT IN MULTIPLE CONDUIT RUNS. IRRIGATION LINES ARE NOT INCLUDED IN THIS SURVEY.
- ⑤ THE BACKGROUND SITE PLAN USED IN PREPARING THIS MAP WAS PREPARED BY OTHERS AND PROVIDED TO ULTRA ENGINEERING BY THE CLIENT. ULTRA ENGINEERING MAKES NO REPRESENTATION AS TO THE ACCURACY OF THE PLAN.
- ⑥ IN THE EVENT THE INFORMATION SHOWN IN THIS PLAN VARIES FROM THE ACTUAL SITE CONDITIONS, ULTRA ENGINEERING SHALL BE NOTIFIED WITHIN 24 HOURS AFTER DISCOVERY OF THE CONFLICT.

LEGEND

ELECTRICAL	—E—
TRAFFIC SIGNAL	—TS—
SITE LIGHT	—SL—
RAILROAD SIGNAL	—RR—
GAS	—G—
TEL/COMM	—TEL—
INTERCOM	—IC—
FIRE ALARM	—FA—
FIBER OPTIC	—FO—
TELEVISION	—TV—
WATER	—W—
SEWER	—SS—
STORM DRAIN	—SD—
POSSIBLE LINE LOCATION (UNK)	—U—
FIRE HYDRANT	
METER/PULL BOX	
VAULT	
VALVE	
SITE LIGHT	
STREET LIGHT	
UNVERIFIED PATH	— - - -
GAS MANIFOLD	
WATER MAIN	
BACKFLOW	
OFFSET FROM REFERENCE	—10'-8"
DEPTH FROM SURFACE DIA. OF PIPE	—1'-6"
NC = NOT CONNECTED	
NLP = NO LONGER PUSH	
NT = NO TONE	
EOS = END OF SIGNAL	
NA = NO ACCESS	
FDC = FIRE DEPARTMENT CONNECTION	
GPR = GROUND PENETRATING RADAR LOCATED LINE	



MATCHLINE SEE SHEET 6 & 14

DATE LOCATED:	3/6/23
DRAWN BY/DATE:	3/17/23
TECHNICIAN:	AZ
CHECK BY/DATE:	HZ
QC CHECKED BY/DATE:	1" = 20'
PROJECT NO.:	
SHEET:	13 OF 16

NO	DATE	REVISIONS	DESCRIPTION

PARTIAL UNDERGROUND UTILITY MAP FOR:
VCA ENGINEERING
 1041 S GARFIELD AVE, SUITE 210, ALHAMBRA, CA 91801
COMPTON COMMUNITY COLLEGE
 1111 E ARTESIA BLVD, COMPTON, CA 90221

NOTES:
 The services provided by Ultra Engineering are for the use of the Client and for the property owner of the Client. It is the responsibility of the Client to verify the accuracy of the information provided. It is expressly understood by the Client that Ultra Engineering is not a contractor and its services are not a substitute for compliance with applicable laws and regulations. California Code §64216-4216.9.



MATCHLINE SEE SHEET 4 & 12

MATCHLINE SEE SHEET 5 & 13



MATCHLINE SEE SHEET 8 & 16



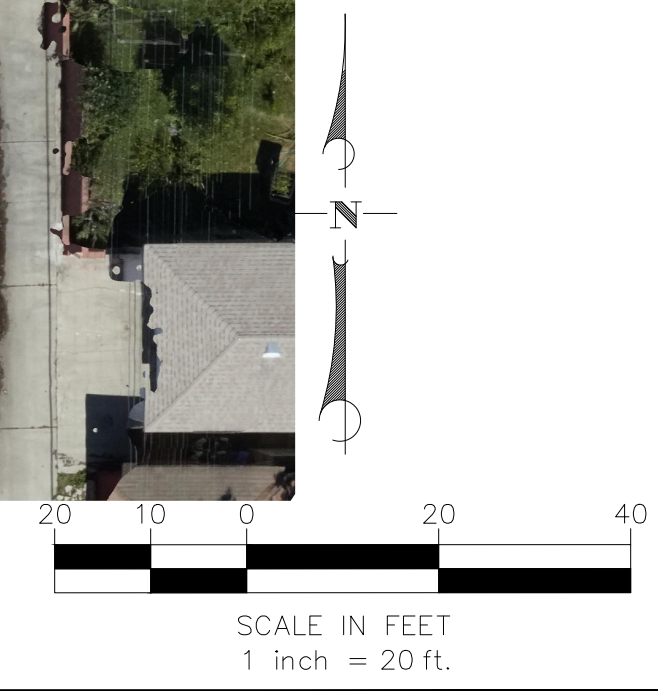
VICINITY MAP
N.T.S.

UTILITY NOTES

- FACILITIES (UTILITY LINES) SHALL BE LOCATED AND MARKED PRIOR TO EXCAVATION. CALL 811 FOR DIG ALERT.
- CONTRACTOR SHALL HAND-EXPOSE TO A POINT OF NO CONFLICT 24" ON EITHER SIDE OF THE UNDERGROUND FACILITY, REGARDLESS OF THE ESTIMATED DEPTH.
- DEPTHS SHOWN ARE APPROXIMATE. ESTIMATED DEPTHS ARE FROM THE GROUND SURFACE TO THE CENTER OF THE FACILITY, INVERT OF WASTE LINES, OR TO THE FACILITY TRACER WIRE. DEPTH ESTIMATES SHOULD BE USED WITH CAUTION AND MAY VARY ALONG THE LENGTH OF THE FACILITY.
- THE SCOPE OF THIS SURVEY DOES NOT INCLUDE FACILITY SIZE OR NUMBER OF CONDUIT IN MULTIPLE CONDUIT RUNS. IRRIGATION LINES ARE NOT INCLUDED IN THIS SURVEY.
- THE BACKGROUND SITE PLAN USED IN PREPARING THIS MAP WAS PREPARED BY OTHERS AND PROVIDED TO ULTRA ENGINEERING BY THE CLIENT. ULTRA ENGINEERING MAKES NO REPRESENTATION AS TO THE ACCURACY OF THE PLAN.
- IN THE EVENT THE INFORMATION SHOWN IN THIS PLAN VARIES FROM THE ACTUAL SITE CONDITIONS, ULTRA ENGINEERING SHALL BE NOTIFIED WITHIN 24 HOURS AFTER DISCOVERY OF THE CONFLICT.

LEGEND

ELECTRICAL	—E—
TRAFFIC SIGNAL	—TS—
SITE LIGHT	—SL—
RAILROAD SIGNAL	—RR—
GAS	—G—
TEL/COMM	—TEL—
INTERCOM	—IC—
FIRE ALARM	—FA—
FIBER OPTIC	—FO—
TELEVISION	—TV—
WATER	—W—
SEWER	—SS—
STORM DRAIN	—SD—
POSSIBLE LINE LOCATION (UNK)	—U—
FIRE HYDRANT	
METER/PULL BOX	
VAULT	
VALVE	
SITE LIGHT	
STREET LIGHT	
UNVERIFIED PATH	—Dashed line—
GAS MANIFOLD	
WATER MAIN	
BACKFLOW	
OFFSET FROM REFERENCE	—Green arrow— 10'-8"
DEPTH FROM SURFACE	—Blue arrow— 1'-6"
DIA. OF PIPE	
NC = NOT CONNECTED	
NLP = NO LONGER PUSH	
NT = NO TONE	
EOS = END OF SIGNAL	
NA = NO ACCESS	
FDC = FIRE DEPARTMENT CONNECTION	
GPR = GROUND PENETRATING RADAR LOCATED LINE	



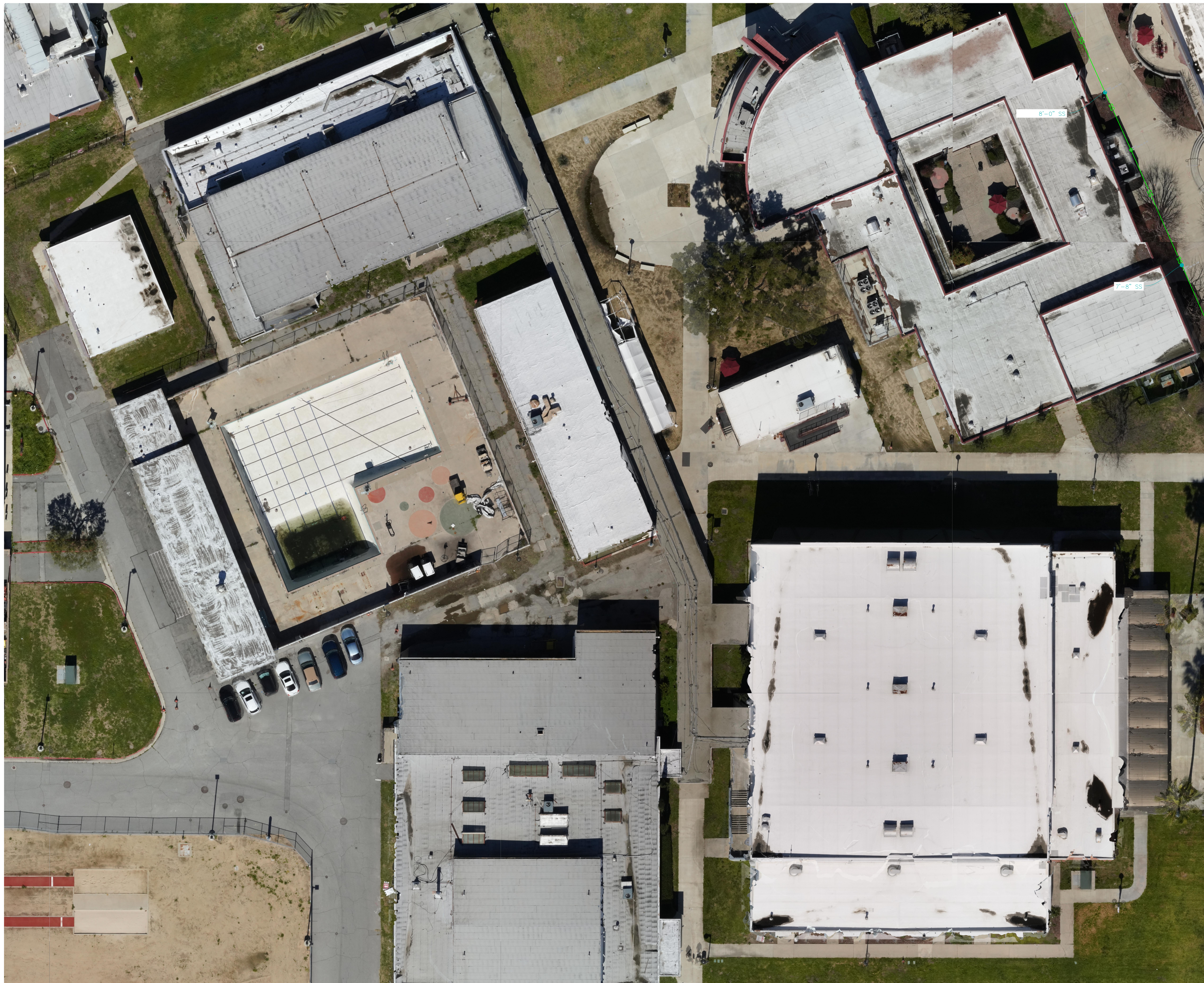
DATE LOCATED:	3/6/23
DRAWN BY/DATE:	3/17/23
TECHNICIAN:	AZ
CHECK BY/DATE:	HZ
QC CHECKED BY/DATE:	1" = 20'
PROJECT NO.:	..
SHEET:	14 OF 16

NO	DATE	BY	DESCRIPTION

PARTIAL UNDERGROUND UTILITY MAP FOR:
VCA ENGINEERING
 1041 S GARFIELD AVE, SUITE 210, ALHAMBRA, CA 91801
COMPTON COMMUNITY COLLEGE
 1111 E ARTESIA BLVD, COMPTON, CA 90221

NOTES:
 The services provided by Ultra Engineering are for the use of the Client and for property owner of the responsibility of having to comply with California Government Code §44216-4216.9. It is expressly understood by the Client that Ultra Engineering services are not a substitute for compliance with California Code §44216-4216.9.

MATCHLINE SEE SHEET 5 & 13



MATCHLINE SEE SHEET 8 & 16



VICINITY MAP
N.T.S.

UTILITY NOTES

- ① FACILITIES (UTILITY LINES) SHALL BE LOCATED AND MARKED PRIOR TO EXCAVATION. CALL 811 FOR DIG ALERT.
- ② CONTRACTOR SHALL HAND-EXPOSE TO A POINT OF NO CONFLICT 24" ON EITHER SIDE OF THE UNDERGROUND FACILITY, REGARDLESS OF THE ESTIMATED DEPTH.
- ③ DEPTHS SHOWN ARE APPROXIMATE. ESTIMATED DEPTHS ARE FROM THE GROUND SURFACE TO THE CENTER OF THE FACILITY, INVERT OF WASTE LINES, OR TO THE FACILITY TRACER WIRE. DEPTH ESTIMATES SHOULD BE USED WITH CAUTION AND MAY VARY ALONG THE LENGTH OF THE FACILITY.
- ④ THE SCOPE OF THIS SURVEY DOES NOT INCLUDE FACILITY SIZE OR NUMBER OF CONDUIT IN MULTIPLE CONDUIT RUNS. IRRIGATION LINES ARE NOT INCLUDED IN THIS SURVEY.
- ⑤ THE BACKGROUND SITE PLAN USED IN PREPARING THIS MAP WAS PREPARED BY OTHERS AND PROVIDED TO ULTRA ENGINEERING BY THE CLIENT. ULTRA ENGINEERING MAKES NO REPRESENTATION AS TO THE ACCURACY OF THE PLAN.
- ⑥ IN THE EVENT THE INFORMATION SHOWN IN THIS PLAN VARIES FROM THE ACTUAL SITE CONDITIONS, ULTRA ENGINEERING SHALL BE NOTIFIED WITHIN 24 HOURS AFTER DISCOVERY OF THE CONFLICT.

LEGEND

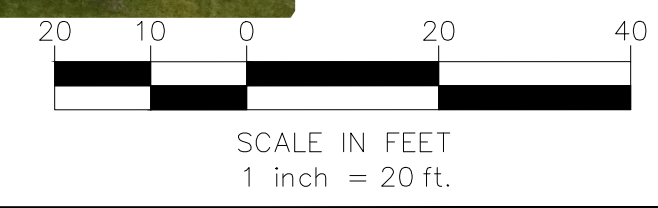
- ELECTRICAL — E —
- TRAFFIC SIGNAL — TS —
- SITE LIGHT — SL —
- RAILROAD SIGNAL — RR —
- GAS — G —
- TEL/COMM — TEL —
- INTERCOM — IC —
- FIRE ALARM — FA —
- FIBER OPTIC — FO —
- TELEVISION — TV —
- WATER — W —
- SEWER — SS —
- STORM DRAIN — SD —
- POSSIBLE LINE LOCATION (UNK) — U —

- FIRE HYDRANT
- METER/PULL BOX
- VAULT
- VALVE
- SITE LIGHT
- STREET LIGHT

- UNVERIFIED PATH
- GAS MANIFOLD
- WATER MAIN
- BACKFLOW

- OFFSET FROM REFERENCE 10'-8"
- DEPTH FROM SURFACE DIA. OF PIPE 1'-6"

- NC = NOT CONNECTED
- NLP = NO LONGER PUSH
- NT = NO TONE
- EOS = END OF SIGNAL
- NA = NO ACCESS
- FDC = FIRE DEPARTMENT CONNECTION
- GPR = GROUND PENETRATING RADAR LOCATED LINE



DATE LOCATED:	3/17/23
DRAWN BY/DATE:	3/17/23
TECHNICIAN:	AZ
CHECK BY/DATE:	AZ
QC CHECKED BY/DATE:	HZ
SCALE:	1" = 20'
PROJECT NO.:	..
SHEET	15 OF 16

NO	DATE	REVISIONS BY DESCRIPTION

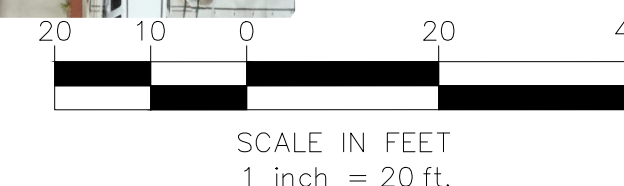
PARTIAL UNDERGROUND UTILITY MAP FOR:
VCA ENGINEERING
 1041 S GARFIELD AVE, SUITE 210, ALHAMBRA, CA 91801
COMPTON COMMUNITY COLLEGE
 1111 E ARTESIA BLVD, COMPTON, CA 90221

NOTES:
 The services provided by Ultra Engineering are for the use of the Client and/or property owner of the responsibility of having to comply with California Government Code §64216-4216.9. It is expressly understood by the Client and Ultra Engineering that the engineering services are not a substitute for compliance with California Code §64216-4216.9.

3806 PEBLEY CT. WINCHESTER, CA 93296 | PHONE: 951-223-5552 | HTTP://WWW.ULTRAENGINEERING.COM

MATCHLINE SEE SHEET 6 & 14

MATCHLINE SEE SHEET 7 & 15



VICINITY MAP
N.T.S.

UTILITY NOTES

- ① FACILITIES (UTILITY LINES) SHALL BE LOCATED AND MARKED PRIOR TO EXCAVATION. CALL 811 FOR DIG ALERT.
- ② CONTRACTOR SHALL HAND-EXPOSE TO A POINT OF NO CONFLICT 24" ON EITHER SIDE OF THE UNDERGROUND FACILITY, REGARDLESS OF THE ESTIMATED DEPTH.
- ③ DEPTHS SHOWN ARE APPROXIMATE. ESTIMATED DEPTHS ARE FROM THE GROUND SURFACE TO THE CENTER OF THE FACILITY, INVERT OF WASTE LINES, OR TO THE FACILITY TRACER WIRE. DEPTH ESTIMATES SHOULD BE USED WITH CAUTION AND MAY VARY ALONG THE LENGTH OF THE FACILITY.
- ④ THE SCOPE OF THIS SURVEY DOES NOT INCLUDE FACILITY SIZE OR NUMBER OF CONDUIT IN MULTIPLE CONDUIT RUNS. IRRIGATION LINES ARE NOT INCLUDED IN THIS SURVEY.
- ⑤ THE BACKGROUND SITE PLAN USED IN PREPARING THIS MAP WAS PREPARED BY OTHERS AND PROVIDED TO ULTRA ENGINEERING BY THE CLIENT. ULTRA ENGINEERING MAKES NO REPRESENTATION AS TO THE ACCURACY OF THE PLAN.
- ⑥ IN THE EVENT THE INFORMATION SHOWN IN THIS PLAN VARIES FROM THE ACTUAL SITE CONDITIONS, ULTRA ENGINEERING SHALL BE NOTIFIED WITHIN 24 HOURS AFTER DISCOVERY OF THE CONFLICT.

LEGEND

- ELECTRICAL — E —
- TRAFFIC SIGNAL — TS —
- SITE LIGHT — SL —
- RAILROAD SIGNAL — RR —
- GAS — G —
- TEL/COMM — TEL —
- INTERCOM — IC —
- FIRE ALARM — FA —
- FIBER OPTIC — FO —
- TELEVISION — TV —
- WATER — W —
- SEWER — SS —
- STORM DRAIN — SD —
- POSSIBLE LINE LOCATION (UNK) — U —
- FIRE HYDRANT —
- METER/PULL BOX —
- VAULT —
- VALVE —
- SITE LIGHT —
- STREET LIGHT —
- UNVERIFIED PATH —
- GAS MANIFOLD —
- WATER MAIN BACKFLOW —
- OFFSET FROM REFERENCE — 10'-8"
- DEPTH FROM SURFACE DIA. OF PIPE — 1'-6"
- NC = NOT CONNECTED
- NLP = NO LONGER PUSH
- NT = NO TONE
- EOS = END OF SIGNAL
- NA = NO ACCESS
- FDC = FIRE DEPARTMENT CONNECTION
- GPR = GROUND PENETRATING RADAR LOCATED LINE

DATE LOCATED:	3/17/23
DRAWN BY/DATE:	3/17/23
TECHNICIAN:	AZ
CHECK BY/DATE:	AZ
QC CHECKED BY/DATE:	HZ
SCALE:	1" = 20'
PROJECT NO.:	..
SHEET:	16 OF 16

NO	DATE	DESCRIPTION

PARTIAL UNDERGROUND UTILITY MAP FOR:
VCA ENGINEERING
 1041 S GARFIELD AVE, SUITE 210, ALHAMBRA, CA 91801
COMPTON COMMUNITY COLLEGE
 1111 E ARTESIA BLVD, COMPTON, CA 90221

NOTES:
 The services provided by Ultra Engineering are for the use of the Client and/or property owner of the responsibility of having the Government Code §4216-4216.9. It is expressly understood by the Client that Ultra Engineering shall not be held responsible for any engineering services are not a substitute for compliance with California Code §4216-4216.9.

38606 FBELEY CT., WINCHESTER, CA 93296 | PHONE: 951-223-5552 | HTTP://WWW.ULTRAENGINEERING.COM