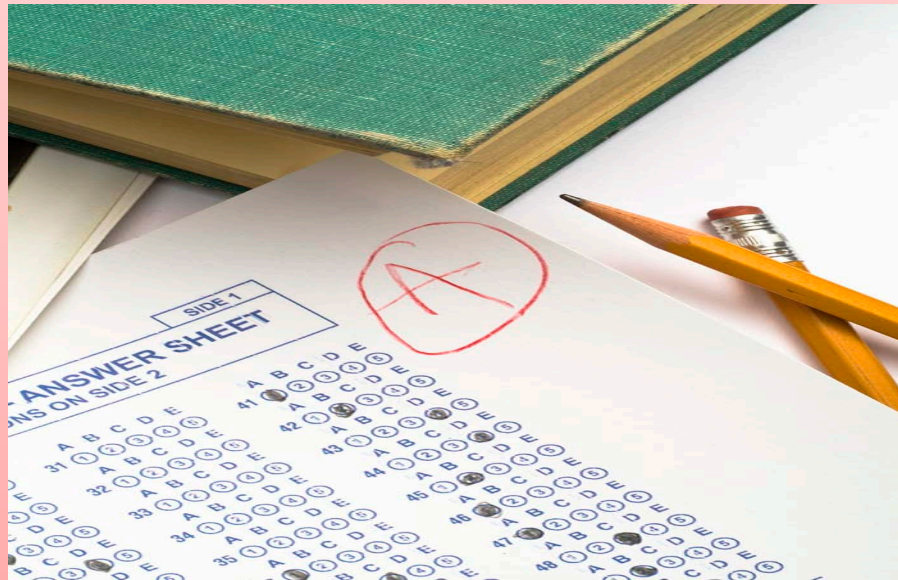


El Camino College Compton Center Assessment Center

D-27

310-900-1600 ext. 2830



What is Assessment?

The Assessment or *Placement Test* is a test that helps the college place you in the appropriate Math and English classes.



Why Do I Need This Test?

**Road
to
Success**



The main goal is to help you be successful in your educational goal.

“Taking the Placement test helped me get into the right classes the first semester.”

~Gilda B.

Thinking About the Test

Smart Students:

- ✓ Study for the test.
- ✓ Get a good night's rest.
- ✓ Take the test seriously.



What kind of student are you?

Not-So-Smart Students:

- ✓ Go in and “wing it”.
- ✓ Pull an “all-nighter” with their friends.
- ✓ Don't take the test seriously.



Let us ask...

What other things
should students
do to prepare
for their test?



Tips for a Successful Test

- ✓ Eat a small meal or snack* 30 minutes before taking the test. (We're talking protein, not Skittles...)
- ✓ Wear comfortable clothes and bring a sweater.
- ✓ Since this test is on the computer, don't forget your glasses!



So What Does This
Test Look
Like?





Welcome to ACCUPLACER!

ACCUPLACER is a suite of tests that quickly, accurately, and efficiently assess reading, writing, math, and computer skills.

If this is your first time visiting, you can learn more about the ACCUPLACER program at www.collegeboard.com/accuplacer

If your institution does not have an account, and you would like to request access to the ACCUPLACER system, please select the New Institution Registration button below.

If you are an existing user, please enter your login information to continue.

ACCUPLACER Login

Username

Password

Login

Reset

[I Forgot My Password](#)

New Institution Registration

System Requirements

For support, please contact 866-607-5223 or email info@accuplacer.org
© 2011 The College Board

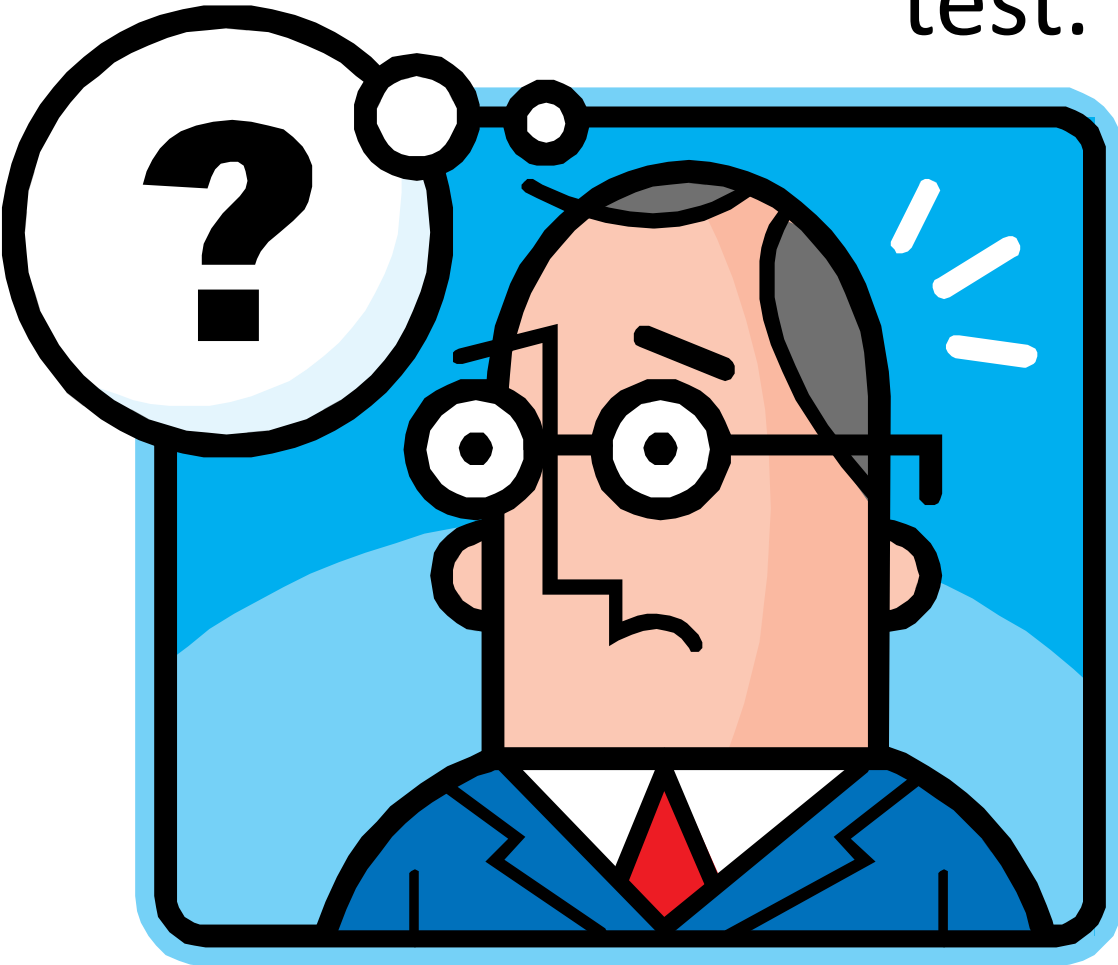
CatApp-5A V2.9.3

When Taking the Test

- Read each question carefully.
- When you find your answer, select “OK”.
- If you want to change your answer, you must select “CANCEL”.
- Once you select “OK,” you cannot go back to a question.



Background questions are part of your
test.



Where you start
on the test will
depend on your
answers.

For example:

Have you taken Algebra?

```
graph TD; Q[Have you taken Algebra?] --> Y[Yes]; Q --> N[No]; Y --> Y1[Your test begins with Elementary Algebra]; N --> N1[Your test begins with Arithmetic];
```

Yes

Your test begins
with **Elementary Algebra**

No

Your test begins
with **Arithmetic**

Our Test is “Adaptive”

What is Adaptive?

If you get a question right, the next question will be a bit more difficult.



If you get a question wrong, the next question will be a bit more easy.



What's On the Test?

Math

12 or 20 Questions



20 Basic Arithmetic



12 Elementary
Algebra

English

40 Questions



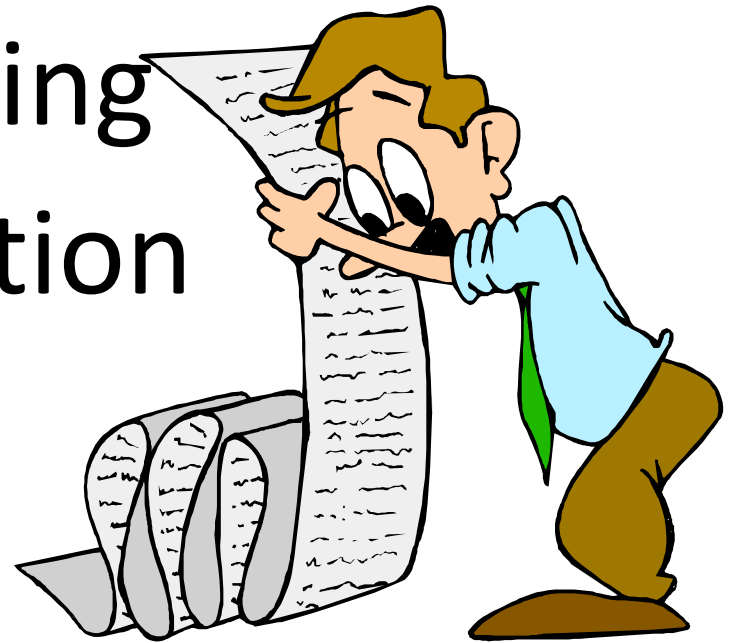
20 Reading
Comprehension



20 Sentence Skills

Some Important Things to Know When Taking the Assessment Test:

- Parking
- What I Need to Bring
- Complete Orientation
- General Rules



Where Do I Take This Test?

The Assessment Center – D26

- Assessment Center hours vary, so please call to make an appointment at:

310-900-1600 ext. 2830

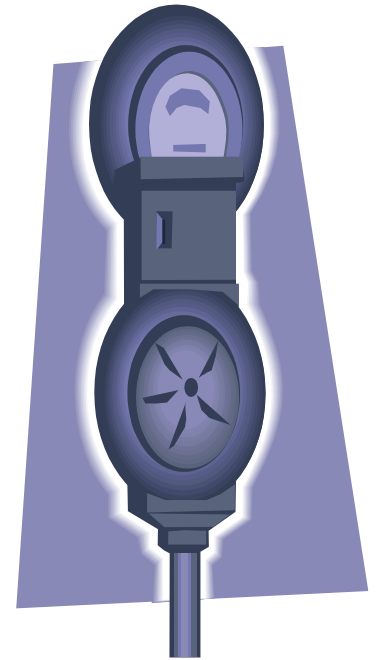
- Please note that no new test will be started one hour prior to closing for lunch break or closing for the day.



Where Do I Park?

- Each test takes about an hour, so you'll need a parking permit from the Bursar's Office in C-36 for \$2.
- You can park in student parking.

NOTE: Parking in Visitor's Parking is not a good idea. You'll be worried about getting a ticket, instead of thinking about taking your test.



What Do I Need?

- Completed a New Student Orientation
- A California Driver's License or acceptable picture ID.
- Your El Camino Student Number.

Question:

How do I get a student number?



- ✓ You have to apply to the college first.
- ✓ Your student ID will then come via email.

Test Rules

- Children, family members, or friends are not allowed to take the test with you, so they have to stay outside.
- Cell phones, iPods, translators, dictionaries, calculators, or any other electronic devices are not allowed.
- No talking.
- Staff are not allowed to help you with test questions.

What Happens If I Want to Retake My Test?

You need **permission from the Assessment Center** to repeat a test.



- ✓ You may only take the placement test **twice**.
- ✓ You may **not** retake the test on the same day.
- ✓ You should review the study guide again before taking the test the second time.

English



Let's try an English question:

Chris heard no unusual noises when he listened in the park.

Rewrite, beginning with Listening in the park,

The next words will be ...

- A. no unusual noises could be heard
- B. then Chris heard no unusual noises
- C. and hearing no unusual noises
- D. Chris heard no unusual noises

Answer:

Chris heard no unusual noises when he listened in the park.

Rewrite, beginning with Listening in the park,

The next words will be ...

D. Chris heard no unusual noises

math

Let's try a math question:

If $X+3 = 4$ what is the value of x ?

- 4
- 7
- 0
- 1
- None

Answer:

If $X+3 = 4$ what is the value of x ?

4

7

0

1

None

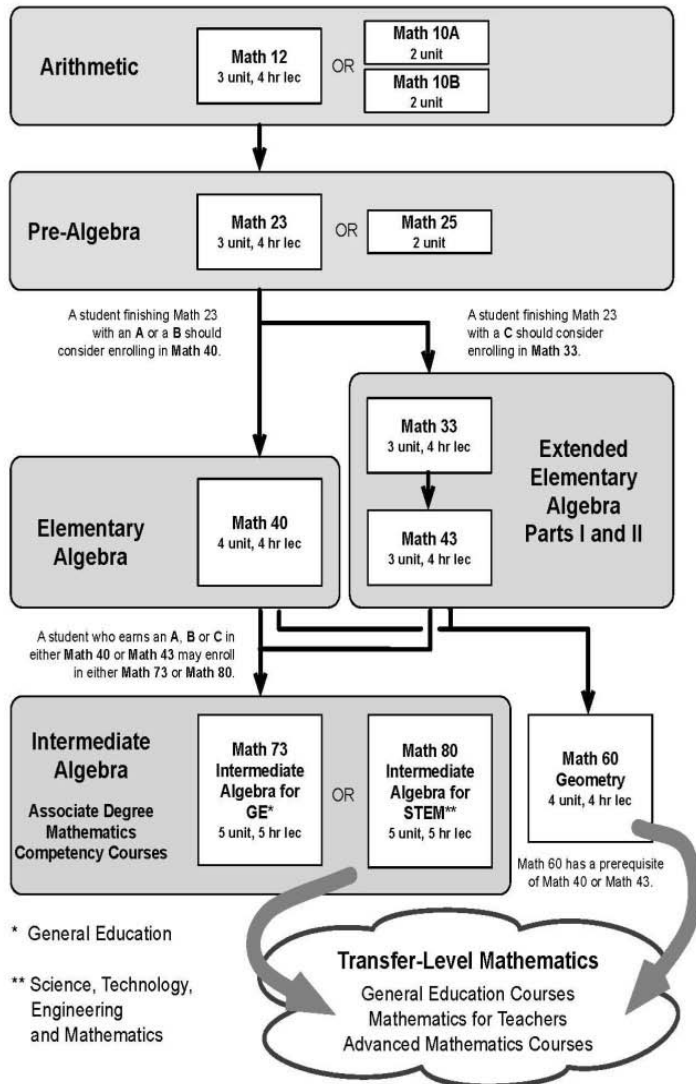
Answer is: 1

I took
my test,
so
now what?



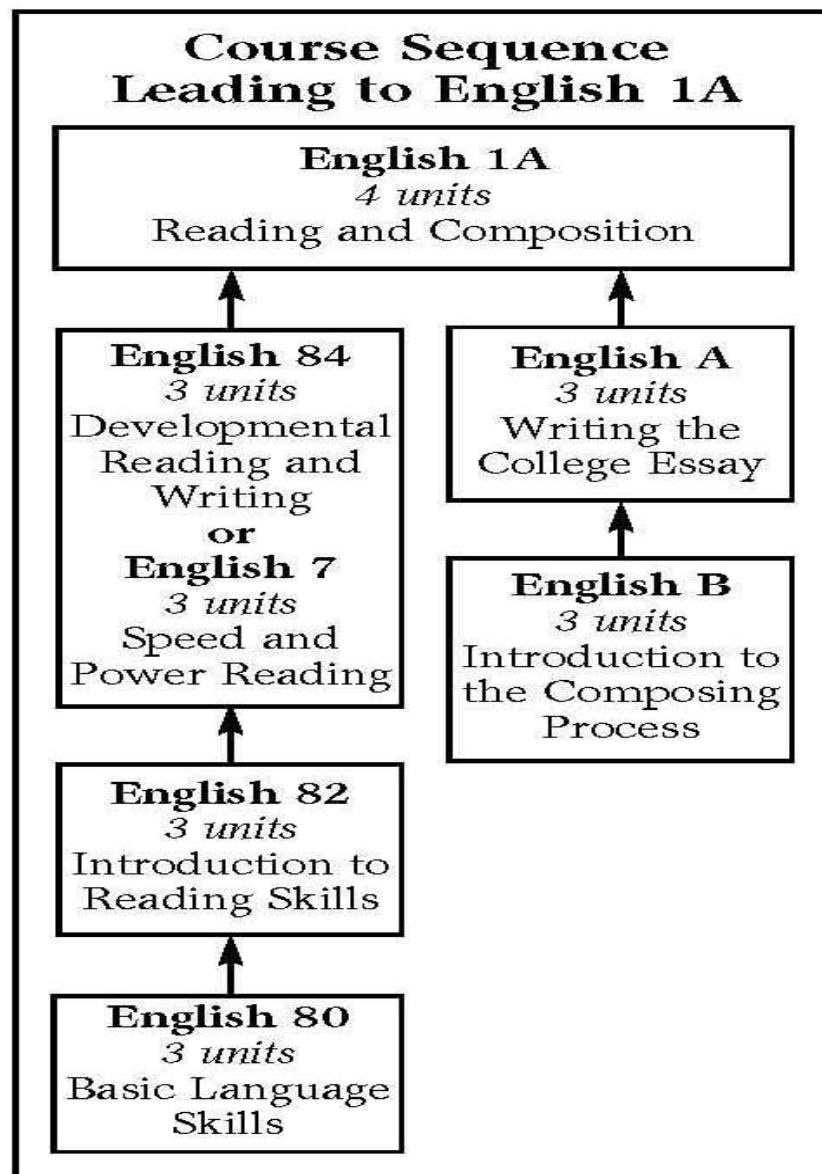
El Camino College

Pre-Transfer Mathematics



Depending on how you did on the test, your counselor will help you find the right class to enroll in.

English



Ready, Set, Prepare!

- Visit the [Assessment Center website](#) for more information
- Review the [Sample Test](#)
 - Pickup a copy in the Assessment Center or review [online](#)
- Take practice math tests using [MyMathTest](#)
 - Link available [online](#)

